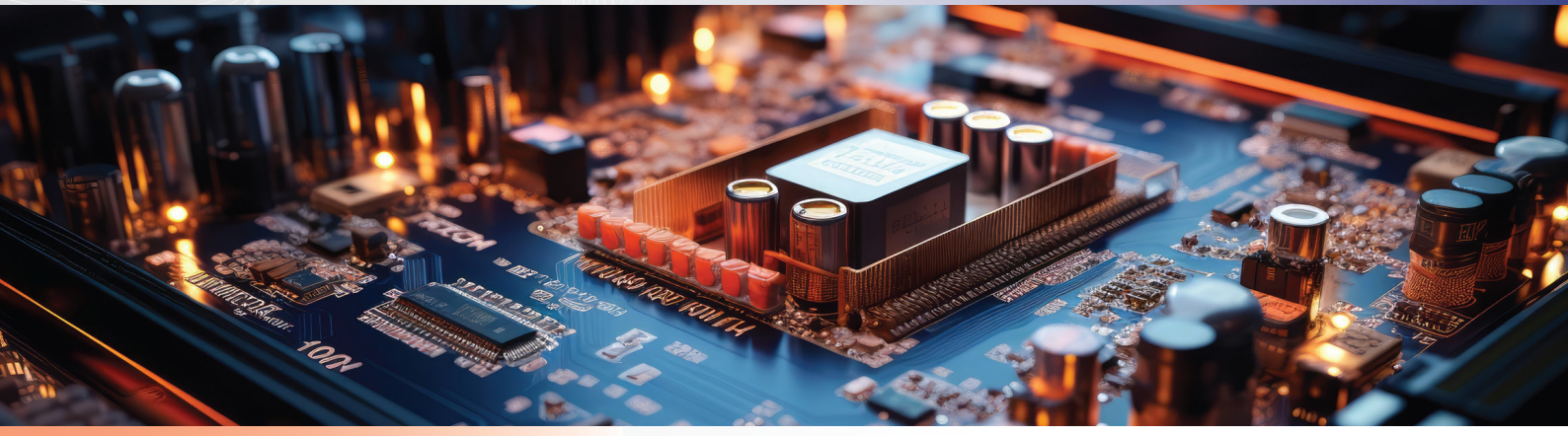


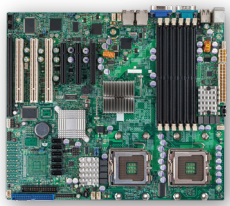
## High-Precision / Non-Contact Linear Scan Module ▶

# Linear Scan Module **QC430**



Microtek's Linear Scan Module features high-precision, full-color scanning with a non-contact design, enabling high-resolution image capture without touching the object. With a stable transmission system and modular structure, the QC430 is ideal for PWBA pre-reflow inspection, comparison, defect detection, and first article checks. It also supports integration across industries such as electronics, biotech, manufacturing, and imaging—offering a cost-effective and efficient inspection solution.

### Defect Detection and First Article Inspection



Inspection Target

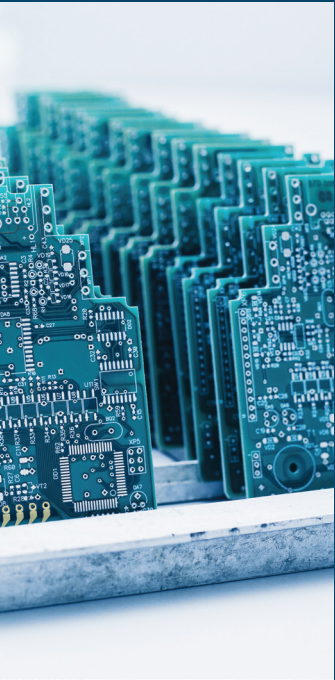


First Article Inspection Machine



QC430 Linear Scan Module

## Features and Benefits



- ▶ **Non-Contact High-Precision Scanning**  
Delivers accurate scanning from a high working distance—ideal for non-flat or delicate objects.
- ▶ **High-Speed USB 3.1 Transmission**  
USB 3.1 interface enhances image capture speed and ensures high productivity.
- ▶ **High-Precision & Stable Transmission**  
Precision transmission system ensures stable scanning, minimizes errors, and improves inspection accuracy.

- ▶ **Modular & Flexible Integration**  
Modular design allows easy integration with various equipment and conveyor systems, offering greater flexibility in installation and maintenance.
- ▶ **Adjustable Exposure for Optimized Imaging**  
Exposure time can be fine-tuned based on object characteristics to ensure the best image quality.
- ▶ **Dedicated SDK for Easy Integration**  
Comes with a full-featured SDK for seamless system integration and easy secondary development.

## Specifications

- Image Sensor: Color Linear CCD
- Resolution: 21.2 $\mu$ m / 1200dpi
- Light Source: LED
- Working Distance: 30mm
- Scanning Area: 304.8mm × 419.1mm (12" × 16.5")
- Scanning Speed: 79.4s @ 1200dpi
- Memory: 8GB
- Output Format: TIFF / JPG
- Data Interface: USB 3.1
- Dimensions: 702mm (L) × 406mm (W) × 132mm (H)
- Weight: 11kg
- Power Supply: DC 24V, 2.5A
- Power Consumption: 60W
- Operating Temperature: 5°C ~ 40°C
- OS Compatibility: Windows 10 (32-bit & 64-bit)  
Windows 11 (64-bit)

To learn more, please contact your local Microtek representative or dealer.