

Installation and Execution of MiToolbox Software for the NDT-2000

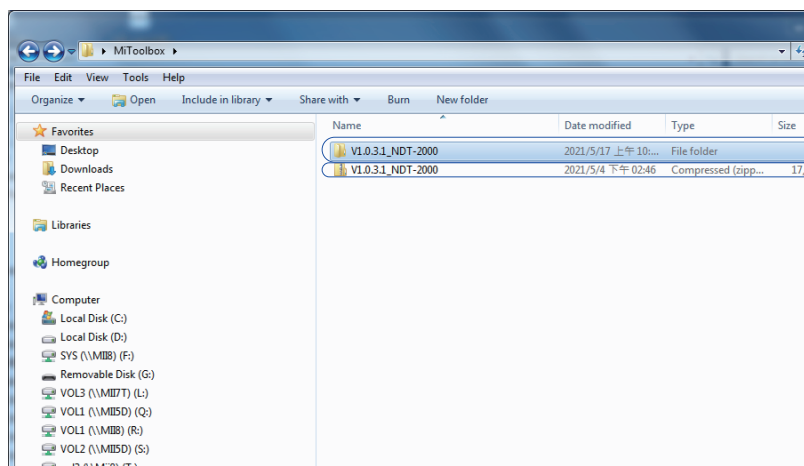
MiToolbox is software is exclusively designed by Microtek for your digitizer in use. Once it is installed and run in the computer, it will automatically detect and dianose whether components of the digitizer connected with the computer work normally. Please note that the MiToolbox software only supports specific models of digitizers; therefore, check and make sure that the digitizer in current use is supported by the MiToolbox software before downloading and installing it.

I. Preparation Before the Installation

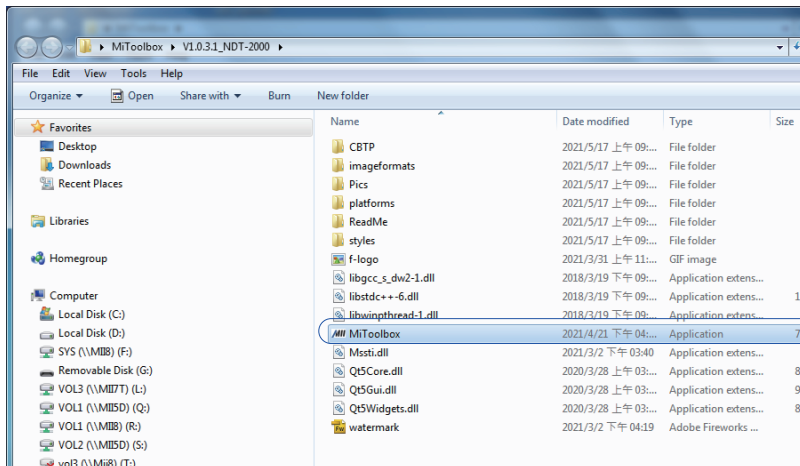
1. Follow the steps listed in the user's manual come with your digitizer package to install the ScanWizard Industry software inside your computer. **Make sure that the ScanWizard Industry has been successfully installed in the computer before approaching the next step.**
2. Follow the steps listed in the user's manual come with your digitizer package to connect the NDT-2000 with your computer. When done, turn on the power switch and wait for the digitizer found by the system automatically.
3. Make sure the Light Shield at the top of the Front Cover of the digitizer has been pull up.

II. Installation of the MiToolbox Software

1. Go to the website “<https://microtek.com/en/download>” to find and to download “MiToolbox_NDT-2000.zip” file into your computer. Unzip the above file into a folder you prefer.

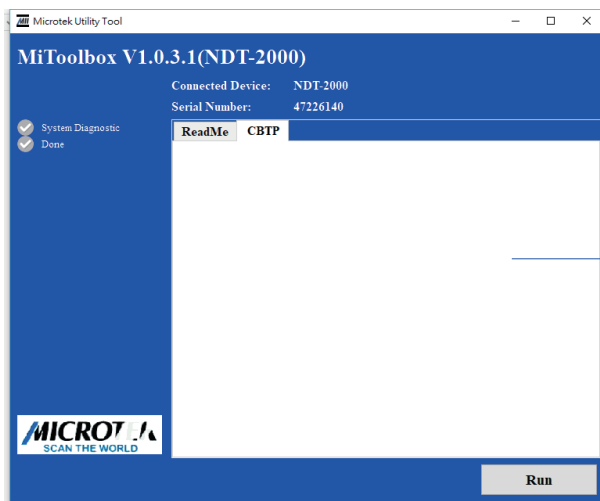


2. Click to expand the unzipped file. Look for an execution file named “MiToolbox”. Double-click it to execute the selected file.



Double-click the selected file to execute.

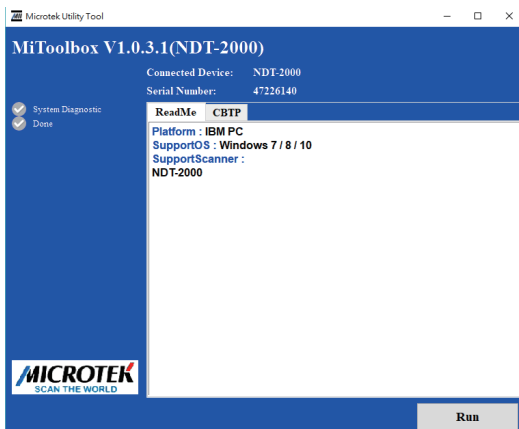
Immediately, Microtek Utility Tool interface would be shown on the screen. It is the main interface of the MiToolbox software.



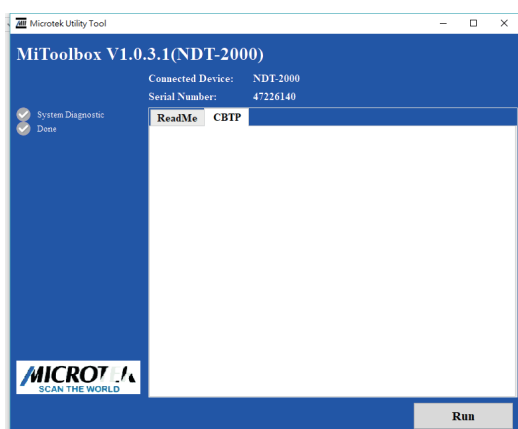
MiToolbox software interface

III. MiToolbox Software Interface

In the MiToolbox interface, there are two functional tabs which can be used with your digitizer. Click the ReadMe tab to find out the basic information about the computer platform and the supported OS related to the digitizer you are currently using. If you like the system to diagnose the digitizer in use automatically, please click the CBTP tab and switch to the CBTP window.



Find out the information about the digitizer in use, the computer in use and the supported OS in the ReadMe window.

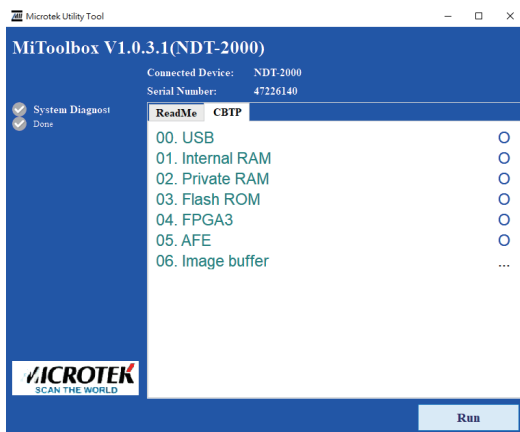


If you like to diagnose whether components of the digitizer in use work normally, switch to the CBTP window.

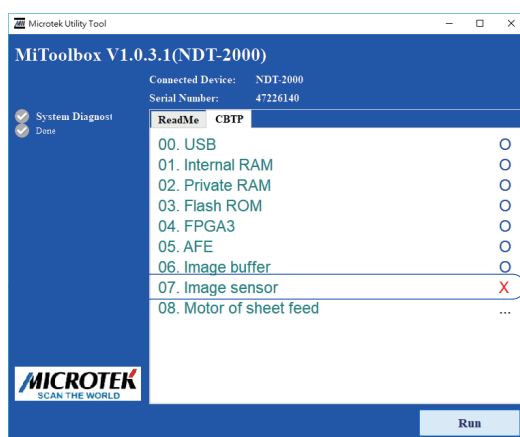
IV. Diagnose Your Digitizer

1. In the CBTP window, click the Run button at bottom to start the diagnosing of components automatically. The checked components will be listed and displayed in the CBTP window.

When the checked component works well, it will be marked by a blue circle. If not, it will be marked by a red x. as shown in the following graphs.



Checked and passed components will be marked by a blue circle behind.

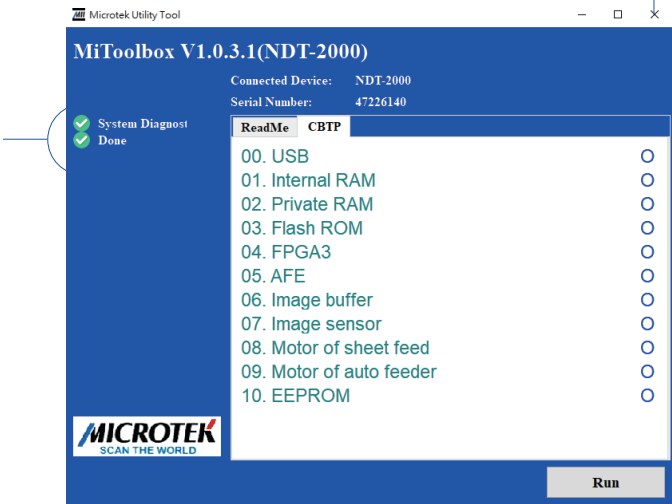


Checked and failed component will be marked by a red x behind.

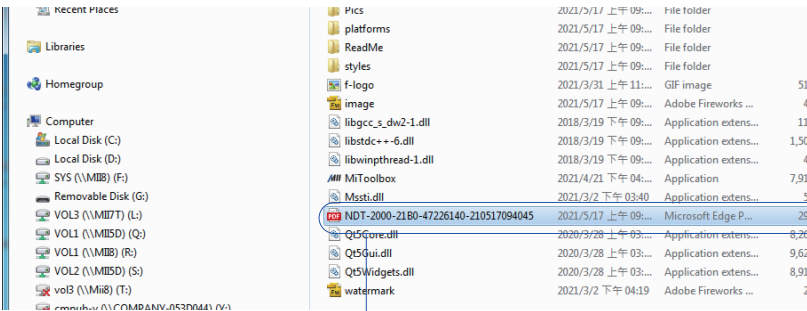
2. When the diagnosis process is complete, "System Diagnostic" and "Done" at the left column of the window will be checked. Click the X button at the top-right side of the MiToolbox interface to shut down the program.

Click "X" button to exit the MiToolbox software.

All components have been checked and then these two items will be marked.



3. Go to the folder where you unzipped "V1.0.3.1_NDT-2000.zip" file. You will see a PDF file inside. It is a detail test report about your digitizer. If needed, click it to expand and read.



Click the PDF file to check the test report of your digitizer.

