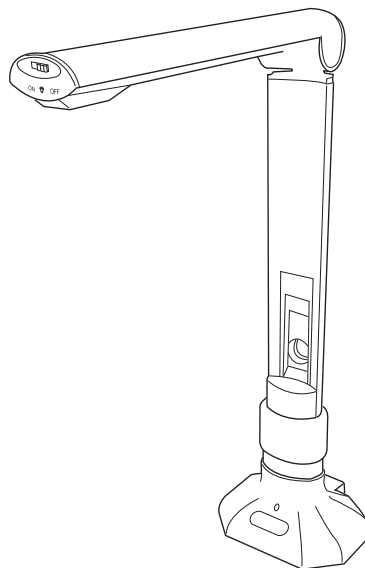


Document Camera

H-Screen 911
H-Screen 911L
H-Screen 912L

User's Manual



Preface

Copyright

© 2024, Microtek International, Inc., all rights reserved. This document may not be reproduced or copied in any way, stored electronically, or translated into any language, without the permission of Microtek International, Inc.

Trademarks

Microtek is trademark or registered trademark of Microtek International, Inc. All other trademarks or registered trademarks are the property of their respective holders. Specifications, software and hardware bundles are subject to change without notice. Not responsible for typographical errors.

Disclaimer

The contents of this manual have been checked carefully for accuracy, and every effort has been made to ensure that there are no errors. However, Microtek makes no guarantee as to the accuracy of the contents of this document and reserves the right to make changes to the contents without prior warning.

I49-5419, B
01/2024

Microtek International, Inc.
No. 6, Industry East Road 3, Hsinchu Science Park, Hsinchu, 30075, Taiwan
Tel: 886-3-5772155, Fax: 886-3-5772598, <https://www.microtek.com>

Table of Contents

Introduction	5
Features	5
Taking a Closer Look.....	6
Initial Setup	7
Step 1: Unpacking Package Contents.....	7
Step 2: Installing the Software	8
Step 3: Connecting the Scanner	9
Step 4: Positioning Documents.....	10
Step 5: Activating Software	11
Setting the On-screen Display Language.....	11
Naming Files	11
Basic Shooting	12
Shooting Your First Still Image	12
Shooting Your First Video	13
Camera Imaging Software	14
Launching Software	14
User Interface & Navigation	15
Software Functions.....	17
File Save Location Setting.....	17
Switching Primary and Secondary Lens	17
Shooting Modes	18
Normal Shooting	18
Timed Shooting.....	18
Smart Shooting	19
Basic Image Settings	20
Resolution Setting	20
File Format Setting	20
Image Color Mode Setting	21
Advanced Image Settings	22
Image Cropping Mode Setting	22
Image Quality Adjustments.....	24
Image Processing Functions	25

The Preview window	26
The Preview Auxiliary Tools	26
The Thumbnail View Window And The Right-click Menu	26
Enabling and Setting Up Secondary Lens Buttons.....	27
The Setup.....	28
File Naming Setting	28
JPEG Image Quality Setting	29
Other Configuration Settings (DPI/Print Mode/Language/Play audio)	29
Watermark Setting.....	30
Instant Function Buttons.....	31
Instant Printing	31
Instant Document	31
Instant Barcode Recognition	31
Instant PDF	31
Creating a Multi-page PDF	32
Merging Multiple Images into One Image	33
ID Card Recognition	34
Shooting Video.....	35
Image Post-processing and Applications	36
Appendix	37
FAQ and Solutions.....	37
Specifications of H-Screen 911	38
Specifications of H-Screen 911L.....	39
Specifications of H-Screen 912L.....	40

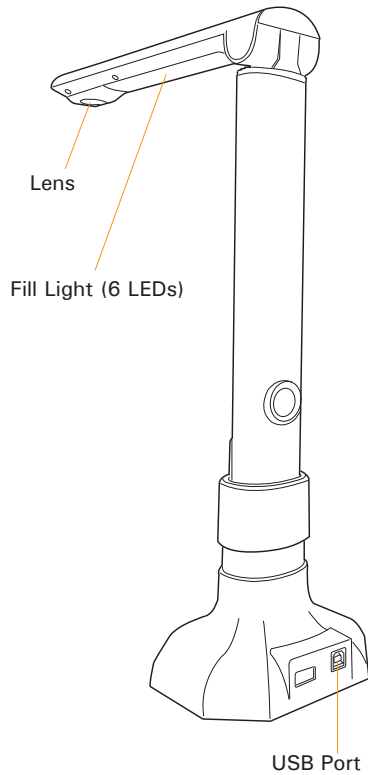
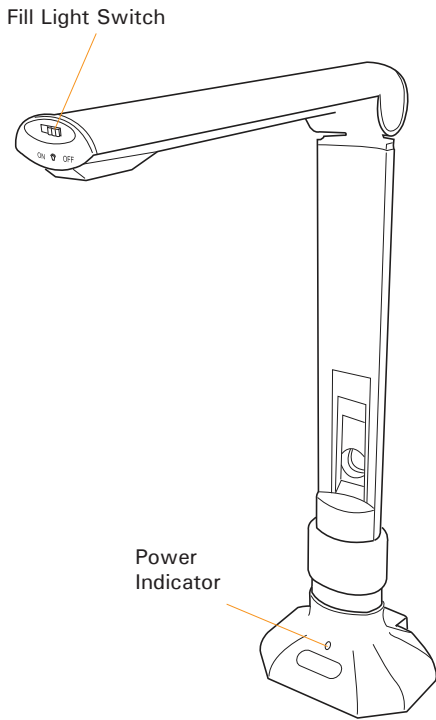
Introduction

Microtek's H-Screen document camera carries out a newly foldable design. Adopted with high-quality CMOS sensor and auto-focus lens, it can capture images of most objects and generate images with superior quality. H-Screen document camera requires only the power of the connected computer, without consuming extra external power at all. By just clicking one button conveniently, users can make PDF files at the speed of per page per second. Users can take a photo and record the photographing process as a teaching demo at the same time. With its easy-to-carry feature, users can scan what they need anytime. Microtek's H-Screen document camera makes office works and teaching jobs easier, cleaner and more convenient.

Features

- High-quality CMOS sensor and autofocus lens ensure superior image quality.
- Long DOF are convenient for capturing images of objects with heights.
- Overviews real-time images on the screen in sync.
- Captures with one button in seconds.
- Built-in fill light (6 LEDs) enhance the front lighting.
- Foldable design is easy to carry and store.
- Plug-in USB requires no external power to operate.
- Supports photo shooting, video recording, and screen recording, which is an ideal tool for using in offices and schools.
- Supports continuous shooting at a regular time interval and auto-sensing continuous shooting; also, capable to copy a book in fast speeds.
- Built-in Smart Edge Correction and Image Enhancement functions automatically recover imperfect images, such as auto cropping, background color removing, black borders removing and de-noising.
- Capable to combine multiple continuously shooting images and save them as one PDF file.
- Capable to combine multiple images and save them as one image file.
- Supports OCR and barcodes recognition
- Supports shooting of various types of materials, such as documents, tickets, receipts, information, books and 3D objects.
- Post-production modules for image editing supports direct image processing, image transforming, E-mail, OCR and sharing on cloud.
- Tailor-made image capturing software contains full-screen and easy-to-use interface.
- Optional hard platform for the further purchase.

Taking a Closer Look



Initial Setup

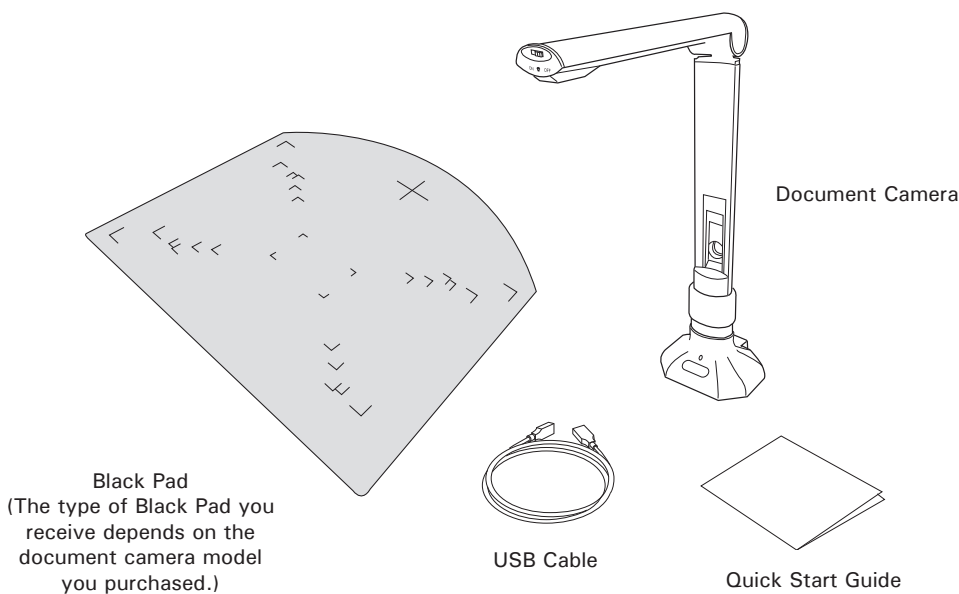
After unpacking your document camera package, follow the steps below for a quick and easy installation process.

NOTE:

- Please check for all components come with your document camera package. If something is missing, please contact with your local dealer or Microtek's customer service center.
- Do not place the document camera on any slippery, slanted, or unstable surface. The document camera may slide or fall, causing serious injury to people as well as severe damage to the scanner.
- Save all packing materials of the document camera, including the outer carton, if you have a need to transport the document camera in the future.

Step 1: Unpacking Package Contents


After unpacking your document camera package, please check for the major components listed below.



Step 2: Installing the Software

Important: You must install all software before connecting your document camera. Always close any open programs and turn off Anti-virus utilities before installing software.



1. Go to the Microtek website at <https://www.microtek.com>.
2. Use the search  function to locate your product (e.g., H-Screen 912L) and navigate to the “Downloads” page associated with this product.
3. Download the required drivers and software marked as “Yes” on the download list, based on your operating system.
- 4) After the download is complete, double-click the downloaded file (*.exe) to begin the installation process.

Once the installation is finished, you’ll notice the program icon appearing on the desktop.

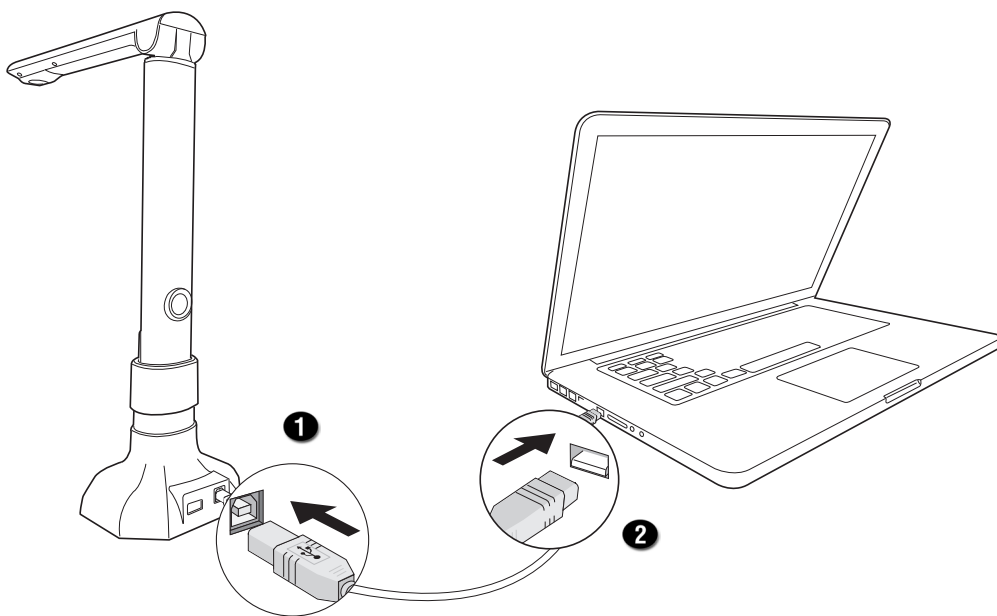
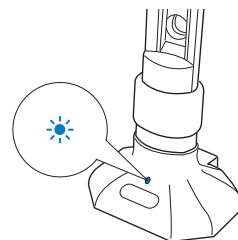
NOTE: The file download process may take some time. The duration may vary based on your internet speed, bandwidth, file size, and other factors. Please be patient during the download. If you encounter any issues or need further assistance, please contact Microtek Customer Service Department.

Step 3: Connecting the Document Camera

1. Connect one end of the 2.0 cable to the document camera's USB port.
2. Connect the other end the USB 2.0 cable to your computer.

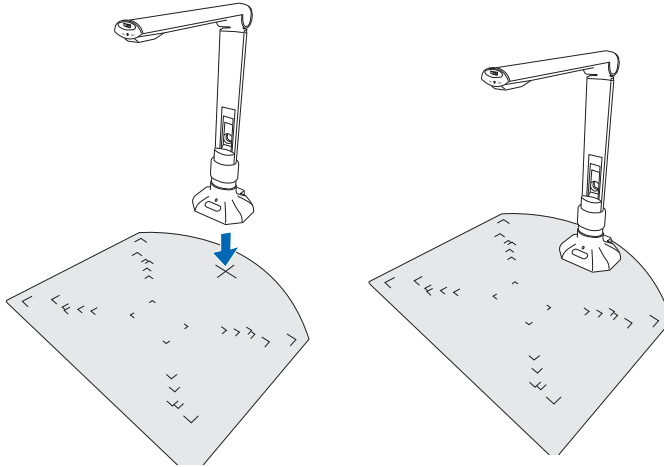
When done, the power indicator at the front bottom of the document camera will light up in blue.

The system will detect your document camera automatically.

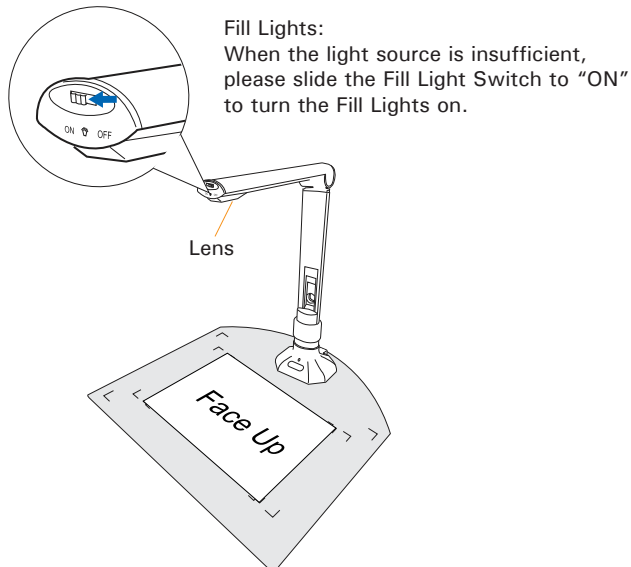


Step 4: Positioning Documents

1. Place the Black Pad on a flat and stable surface, with the side with texts facing up.
2. Locate a cross mark on the Black Pad, aim the document camera for the cross mark and then place it down on the Black Pad, with the front side facing forward.



3. Finally, place the target at the center of the Black Pad, aligning the side to be captured facing up and toward the lens.

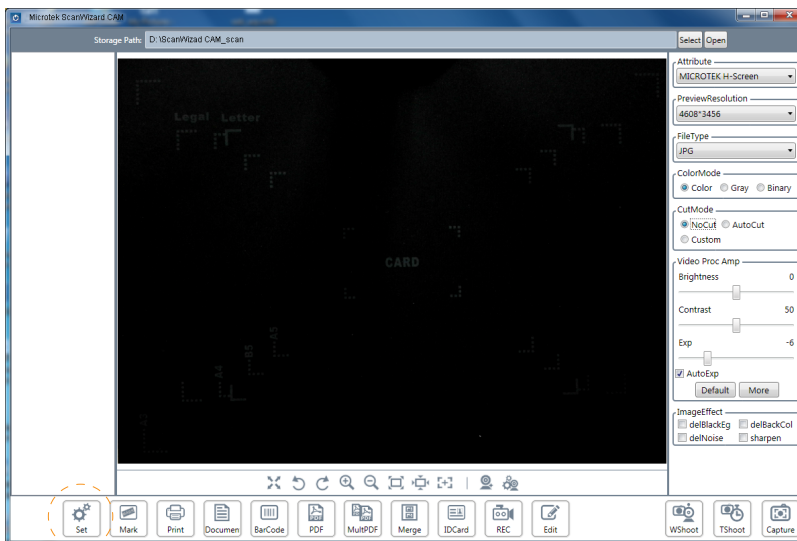


Step 5: Activating Software

To activate the software:



Double-click the “Microtek ScanWizard CAM” icon, shown as the left graph, on the desktop to activate the software. If the document camera is connected correctly, you should be able to preview the real-time image taken by the lens on the screen. Hereby, you can start using the software program.



On-screen Display Language Setting

Click the “Set” button at the bottom of the interface to enable the Set window. From the “Language” options menu, click to select the language you want to use for the on-screen display.

Naming Files

Click the “Set” button at the bottom of the interface to enable the Set window. From the “NameType” column, select a method you want to use to name your file.

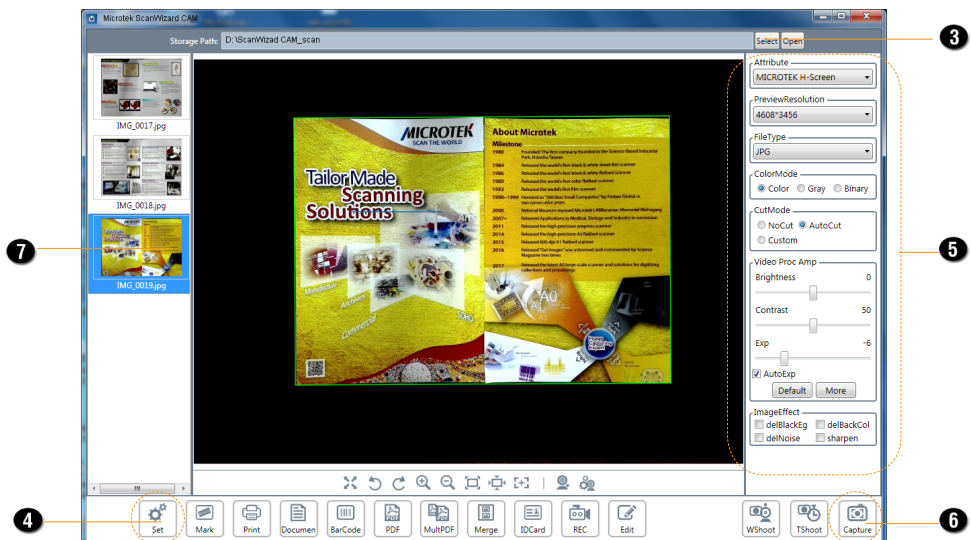
Basic Shooting

Shooting Your First Still Image

- 1 Place the target on the center of the Black Pad, aligning the side to be scanned facing up and toward the lens.
2. Double-click the "Microtek ScanWizard CAM" icon on the desktop to activate the software interface.
3. Click the "Select" button at the top-right side of the interface to select a preferred storage path for the saved file.
4. Click the "Set" button at the bottom side of the interface to enable the Set window. From the "NameType" column, select a method you want to use to name your file.
5. At right columns of the interface, specify your scanning requirements, such as resolutions, color modes, file types, cutting ways, image quality and so on.
6. Click the "Capture" button at the bottom-right of the interface to capture the image you want.

The captured image will be displayed as a thumbnail image in list at the Thumbnail View window of the interface. It will also be saved under the path you have predefined.

7. Click on a thumbnail image to enlarge it for checking in a pop-up window; or, click the right button of the mouse on the selected image to preview, delete, print or re-name the selected image.

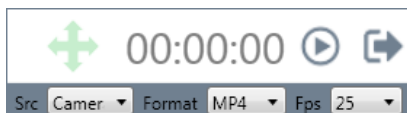


Shooting Your First Video

- 1, Refer to the step 1 to 3 in “Shooting Your First Still Image” section for how to put on your target, enable the software program and select a storage path for the saved file.

2. Click the “REC” button at the bottom of the interface.

The REC window will pop up on the screen. Set up parameters related to the video clips, such as image resource, recording format and FPS (frame per second), there.



3. When done, click “▶” button to start recording a video.

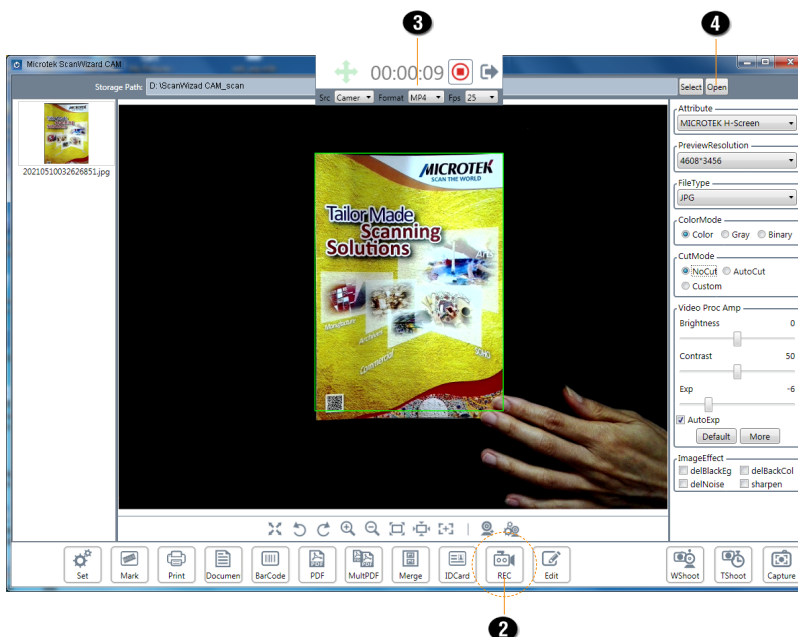
The elapsed recording time will be displayed in the REC window.

To stop video recording, click the “◻” button.

To exit the video recording, click the “✕” button to close the REC window.

The recorded video will be saved in the predefined path and you can watch it by using a video playback software.

4. Click the “Open” button at the top-right side of the interface to check where the video has been saved. Double-click the video to start playing.



Camera Imaging Software

Microtek ScanWizard CAM is image capturing and video shooting software which is easy to be installed and used. It is exclusive designed for taking shots of targets. With a full-window interface, users can start in seconds without any problems.

Launching Software

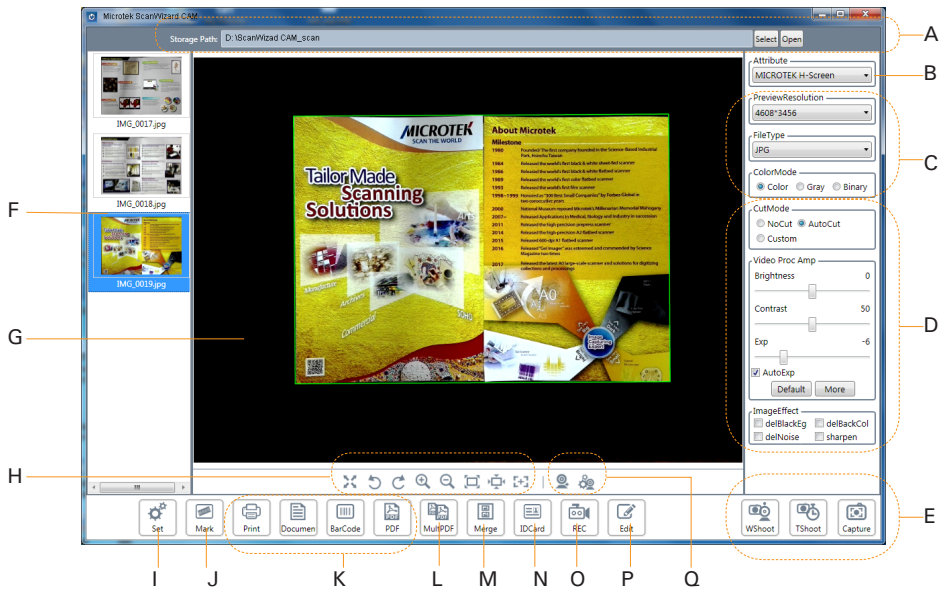


To launch **Microtek ScanWizard CAM**, double-click the “Microtek ScanWizard CAM” icon on the Windows desktop; or choose *Start, All Programs, Microtek ScanWizard CAM*, then *Microtek ScanWizard CAM*.

When the software is activated, if the document camera is connected correctly, you should be able to preview the real-time image taken by the lens and the interface will look like as the graph shown below.



User Interface & Navigation



- A. Storage Path/Select/Open: Used to select a folder to save the captured images or recorded videos.
- B. Attribute: Used to switch between the primary lens and secondary lens.
- C. Basic image settings: Used to select a desired resolution, file format and color mode for captured images.
- D. Advanced image settings: Included image correction tools such as image crop, brightness, contrast and exposure to adjust and enhance captured images.
- E. Shooting modes: Click to select among different shooting modes. Three shooting modes are Smart shooting (WShoot), Timed shooting (TShoot), and Normal shooting (Capture).
- F. Thumbnail View window: Display thumbnail views of the captured and saved images.
- G. Preview window: Display the image to be captured in real time.
- H. Preview Auxiliary tools: Used to rotate, enlarge, minify or auto-focus the image displayed in the Preview window.

- I. Set button: Click to activate the Set window to set up file names, JPEG quality and the language used in the interface.
- J. Mark button: Click to set up parameters related to the watermark appearing on the captured image.
- K. Instant Function buttons: Used to capture image with specific function applied. These buttons include Print, Document, BarCode and PDF.
- L. MultiPDF button: Used to capture a series of images and then combine them as one PDF file.
- M. Merge button: Used to capture a series of images and then merge them as one image file in your preferences.
- N. ID Card button: Used to extract and export information of ID cards as editable files.
- O. REC button: Used to record a video.
- P. Edit button: Click to activate the Image Editing window, where the captured image can be converted, emailed, shared by cloudy, printed, and so on.
- Q. Secondary Lens buttons: Click to activate and set up secondary lens.

Software Functions

File Save Location Setting

Storage Path displays the specific folder in which the captured images and videos are saved.

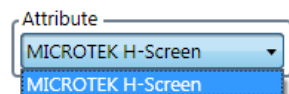


Click the “Select” button to toggle through possible saving paths appearing in a pop-up window and to select the one you want to use to save the captured images.

Click the “Open” button to access the folder using for storing all captured images and videos. Click the file inside to copy or delete if needed.

Switching Primary and Secondary Lens

Attribute displays the type of the document camera in use currently.



If you are using an document camera with two lenses, click the “Attribute” options menu to switch a main lens or a sub lens for using.

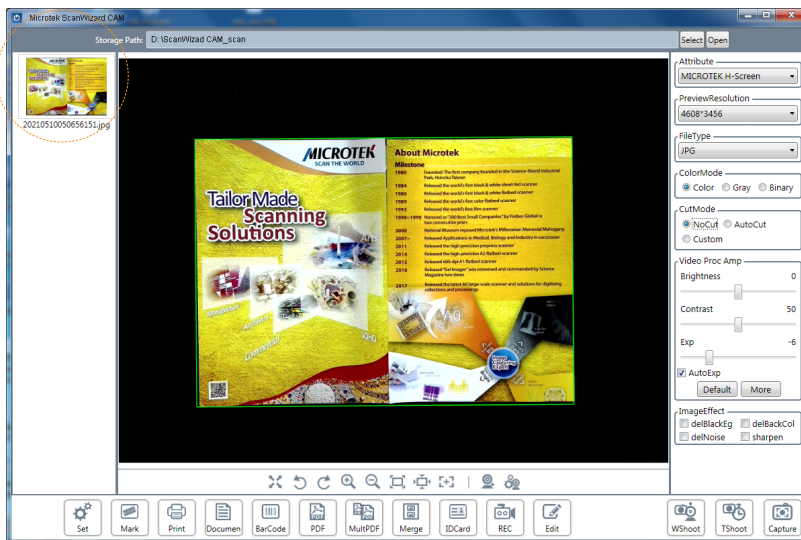
Shooting Modes



Normal Shooting

When the document camera is activated successfully, click the “Capture” button to start a capture of the image.

When done, the captured image will be displayed as a thumbnail image in the Thumbnail View window at the left side of the interface.



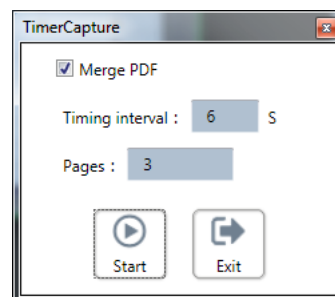
Timed Shooting

This shooting mode allows the camera to capture images continuously at a pre-defined time interval.

Click the “TShoot” button to activate the TimerCapture window.

In the TimerCapture window, set up preferred time intervals first; next, click the “Start” button to start shooting images. At the same time, the numbers of captured images will be displayed in the window.

If “Merge PDF” option is checked, when the shot is finished, all captured images will be merged as one PDF file.

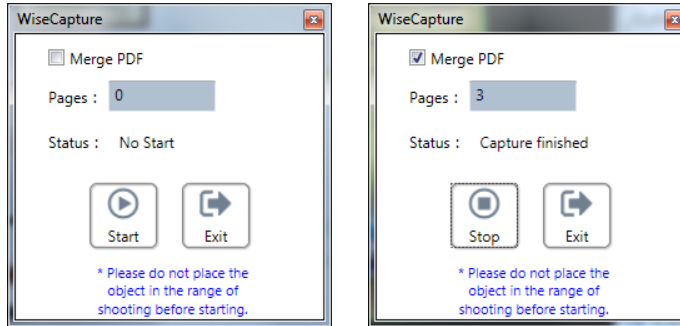




Smart Shooting

This shooting mode allows the camera to capture images continuously when detecting of changes of targets automatically.

Click the “WShoot” button to activate the WiseCapture window.



Please note that do not place the target into the shot range before clicking the “Start” button.

When clicking the “Start” button, the system will capture images continuously when detecting of changes of targets automatically. And, the detecting status, shooting status and the numbers of captured images will be displayed in the window in real time.

If “Merge PDF” option is checked, when the shot is finished, all captured images will be merged as one PDF file.

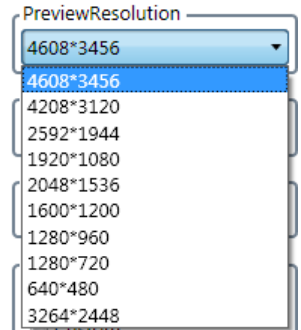
Basic Image Settings

Resolution Setting

Select a resolution for the captured image.

Click the “PreviewResolution” options menu at the right side of the interface to see the available resolutions supported by the document camera in use. Click to select the resolution you want to use for the captured image. The selected resolution value is higher and the size of the captured image will be larger.

Please note that selectable resolutions depend on the document camera is in use.

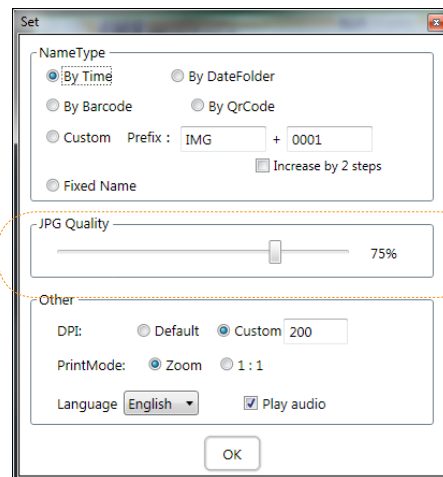
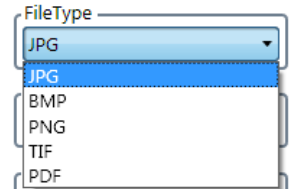


File Format Setting

Select a file format for the captured and saved image.

Click the “FileType” options menu at the right side of the interface to select an image format you want to use. The supported formats include JPG, BMP, PNG, TIP and PDF.

JPG is the default file format which is used in common and occupies less memory space. BMP and TIFF are used to keep uncompressed files which occupy more memory space. PDF is selected when single PDF file is in need.

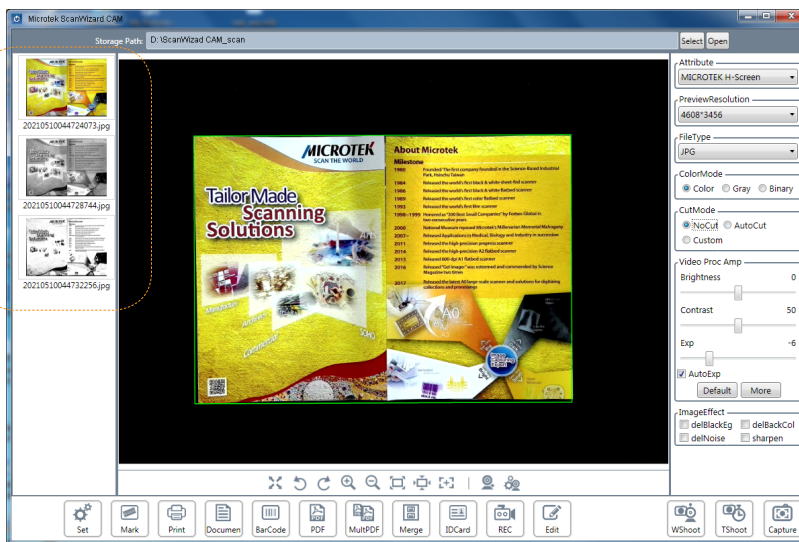
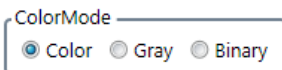


If JPG is selected, you can adjust image quality based on your preference. Click the “Set” button at the bottom of the interface to activate the Set window. In the Set window, drag the slide bar of the “JPG Quality” option to adjust the image quality. The larger of the number means the better the image quality becomes.

Image Color Mode Setting

Select color types for the captured images.

At the right side of the interface, look for the “ColorMode” column and then select the preferred color type for the captured images. The supported options are Color, Gray and Binary.

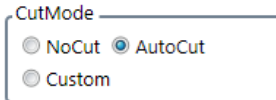


Advanced Image Settings

Cutting Mode Setting

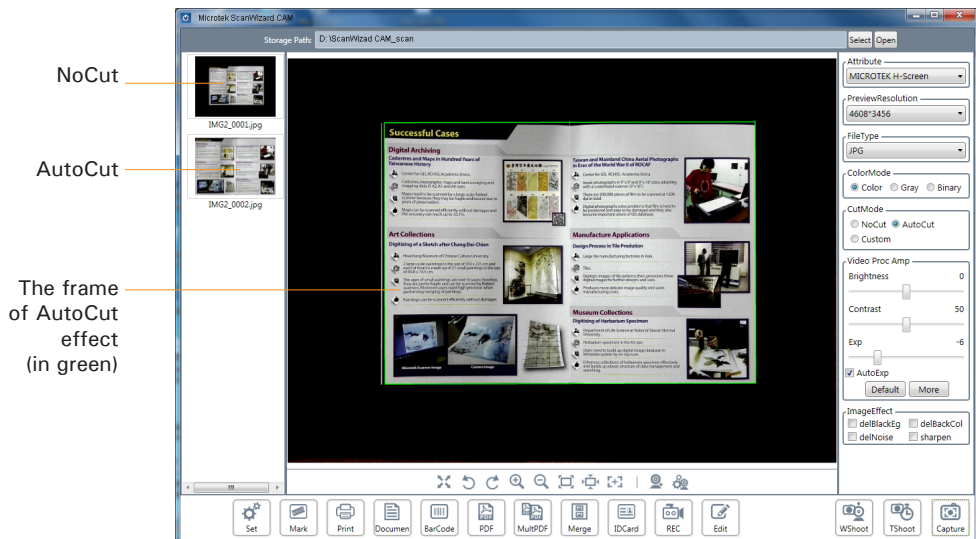
This lets you decide if you have a need to crop the shooting frame of the original target.

At the right side of the interface, look for the “CutMode” column and then select either of three cutting ways. These three cutting ways are NoCut, AutoCut and Custom.



- **NoCut:** The captured image will not be cut, and the image size will have the same size as that of the shooting area in the Preview window.
- **AutoCut:** This will automatically crop the captured image to fit the size of the original and correct the distorted image for proper alignment.

You can select “AutoCut” and “delBlackEg” together. By doing so, the black borders around the cropped image can be removed as well at the same time.



- Custom: This allows you to manually define the size of the crop frame. All you have to do is directly frame the area to be cropped in the Preview window.

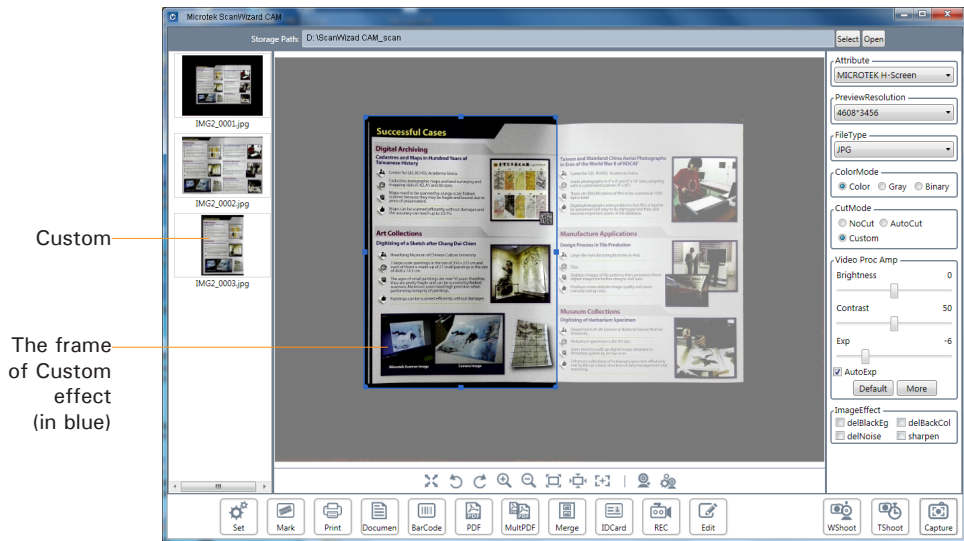


Image Quality Adjustments

The “Video Proc Amp” column includes some image correction tools which allow you to adjust or enhance images for outputting your captured images. You can preview these changes to the images before you capture.

By default, adjustable parameters displayed here are Brightness, Contrast, and Exp (Exposure). Click the “More” button to bring out more parameters for you to adjust.

To bring back the default setting, just click the “Default” button next.

In general, it is recommended that you should use default values for these parameters. If you have a need for further adjustments, please contact with the customer service for proper helps.

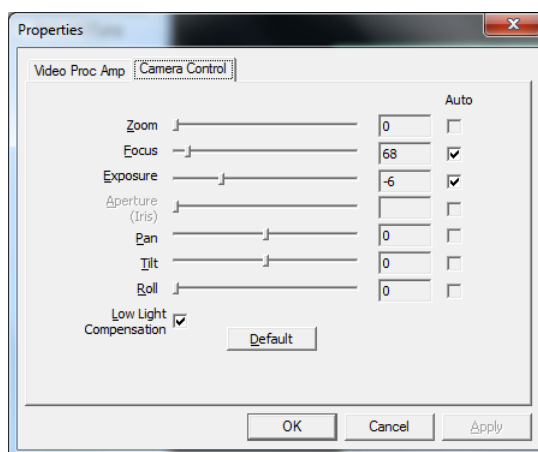
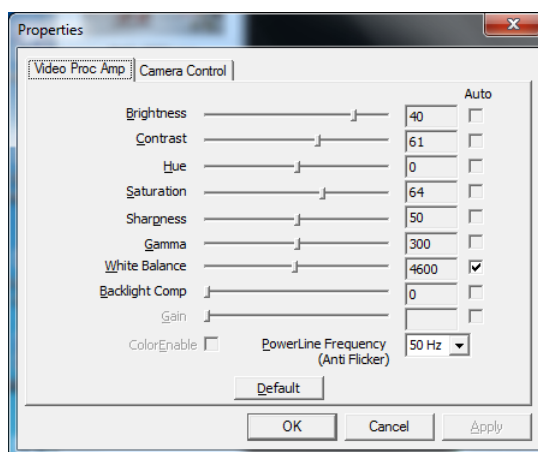
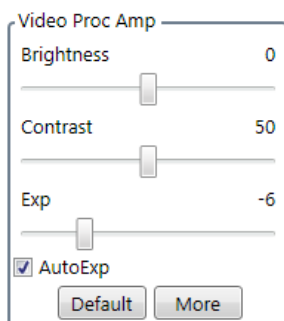
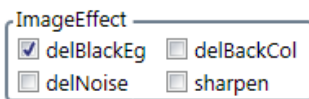


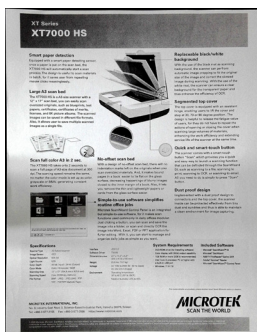
Image Processing Functions

The “ImageEffect” column includes some image improvement tools which can remove unwanted black borders, background colors and noise of captured images and sharpen details of captured images at the same time.

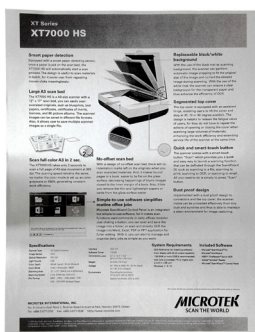


- delBlackEg: This lets the camera automatically removes black borders around the captured image. Also, it will automatically removes black borders around the captured image applied with the “AutoCut” effect.
- delBackCol: This lets the camera automatically removes the background color in/from a captured image. It is recommended to use with documents; also, it should not be applied to originals with a lot of colors or pictures.
- delNoise: This removes unnecessary noise from but still keeps details inside captured images.
- sharpen: This gives greater contrast to edges and details and thus captured images will become brighter and more vivid.

The “delBlackEg” and “delBackCol” tools enhance the readability of documental originals. Also, without background colors, it is clearer and cleaner when printing out documental originals. “delNoise” and “sharpen” tools work only when the ColorMode is set as “Color” and the original is not applied with other image effect tools.



AutoCut Effect



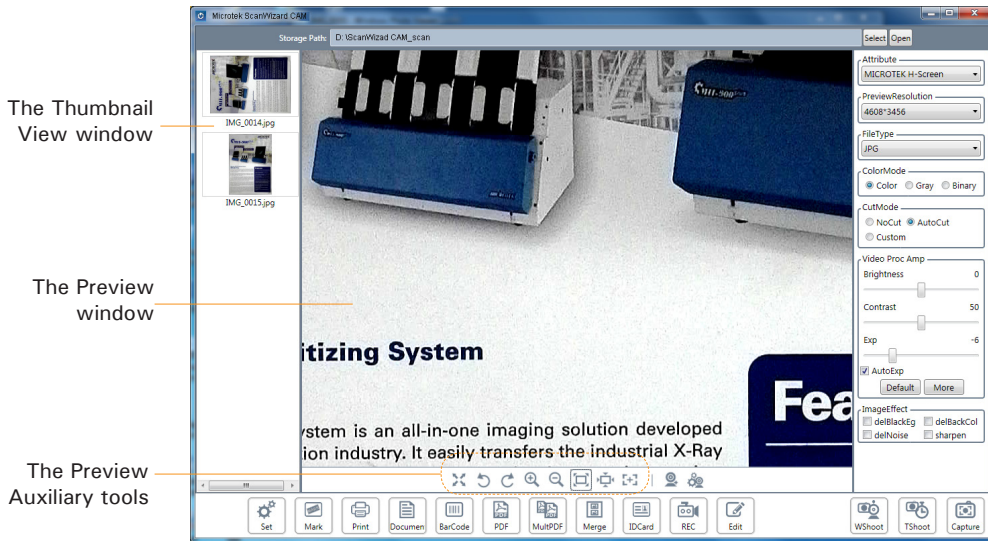
AutoCut and delBlackEg Effects



AutoCut, delBlackEg and delBackCol Effects

The Preview window

The Preview window display a real-time preview image captured by the document camera. The size of the Preview window depends on the model of document camera in use.



The Preview Auxiliary Tools

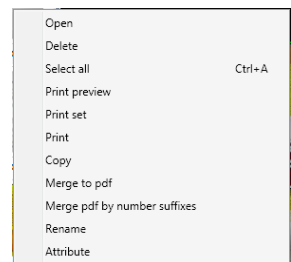
By using the auxiliary tools under the Preview window, users can make the captured image fit to the size of the Preview window, rotate the captured image to left or right by 90 degrees, zoom in or zoom out the captured image, navigate the portions of the captured image in their actual sizes or focus on the captured image automatically.



The Thumbnail View Window And The Right-click Menu

The Thumbnail View window displays thumbnail views of the captured images.



The captured images will be displayed in the Thumbnail View window. To enlarge an image there to check, just double-click on the selected image directly. Or, click the right button of the mouse on the selected image to open a menu window. Click to select an option there, such as Open, Delete, Print or Rename to manipulate the selected image.

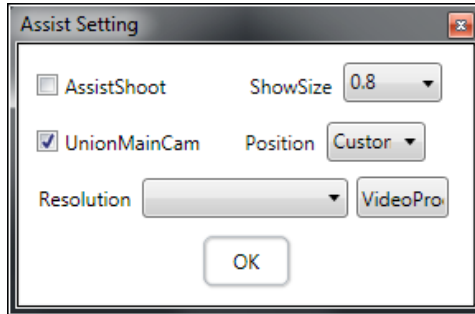




Enabling and Setting Up Secondary Lens Buttons

Secondary Lens Buttons can work only when the model of the document camera in use support these functions.

Click “” button to activate the secondary lens. The screens of the main lens and secondary lens will be displayed in the interface. If you have to change settings for the secondary lens, please click “” button to open the Assist Setting window.



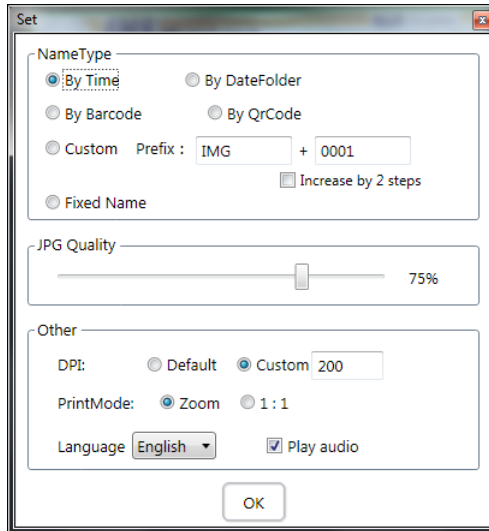
In the Assist Setting window, you are allowed to change settings for the secondary lens. For instance, check the “AssistShoot” option to activate the secondary lens for capturing images, change the displaying size in the “ShowSize” options menu, change resolutions in use, or combine the primary lens with the secondary lens to capture images at the same time.



The Setup

In the “Set” window, you are allowed to name files by different methods, to adjust quality for JPG image, set up printing parameters and on-screen display language.

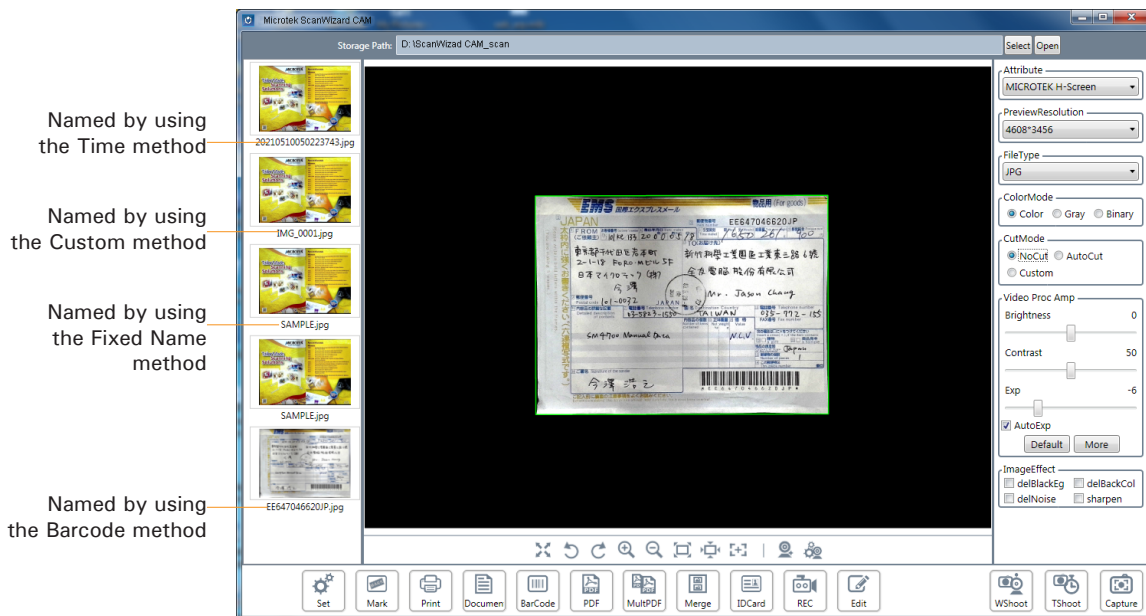
Click the “Set” button to enable the Set window and then start to use functions inside.



File Naming Setting

The “NameType” column offers you six ways to name your files. These ways are Time, DateFolder, Barcode, QrCode, Custom and Fixed Name.

- **By Time:** This method allows you to name your file by using time and a full date when your image is captured, plus a random number (YYYYMMDD + HrMin + Random Number).
- **By DateFolder:** If this method is checked, a folder, with a full date as its folder's name, will appear in the pre-defined storage directory when your shot is done. Those captured images will be saved under the folder mentioned above.
- **By Barcode/By QrCode:** These methods allows you to name your file by using a barcode or QR Code identified by the system.
- **Custom:** This method allows you to name your file by using a given name, plus a sequential number which can be increased by 2 steps.
- **Fixed Name:** If this method is checked, a window will pop up on the screen. Enter the file name you want to use there.



JPEG Image Quality Setting

When the FileType is set as “JPG”, you are allowed to drag the slide bar in the “JPG Quality” column to adjust the compression ratio for the JPG image. When the value is set smaller, the compression ratio will become higher and the captured image will look more blurry.

Other Configuration Settings

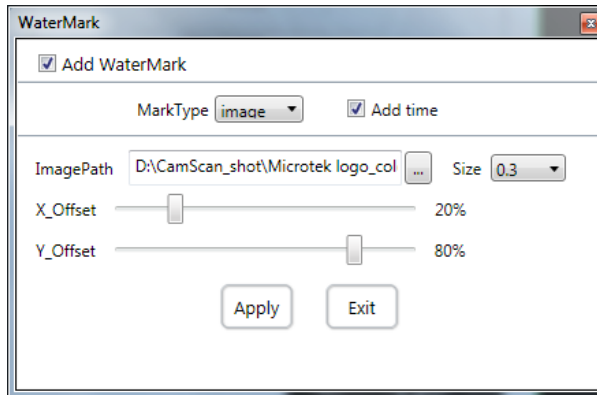
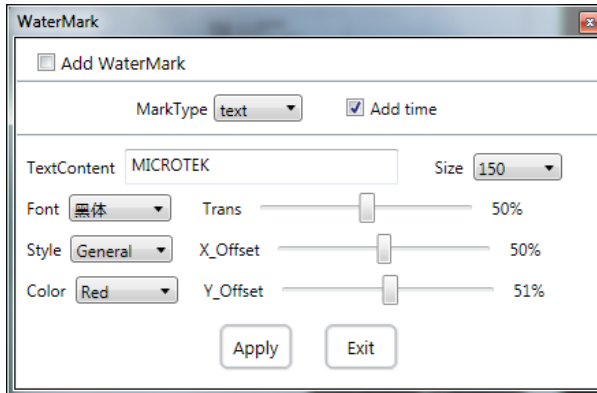
- **DPI:** The modifications of DPI here are designed for some special situations. However, these modified values of DPI do not affect clarity of captured images.
- **PrintMode:** You are allowed to select “Zoom” or “1:1” printing modes.
- **Language:** Click the menu box to select the language used in the on-screen display. The supported languages are Simplified Chinese, Traditional Chinese and English.
- **Play audio:** Check/uncheck the option to turn on or off the sound of the shooting action.



Watermark Setting

The “Mark” function button allows you to add watermarks, such as texts, images or time, into your captured images.

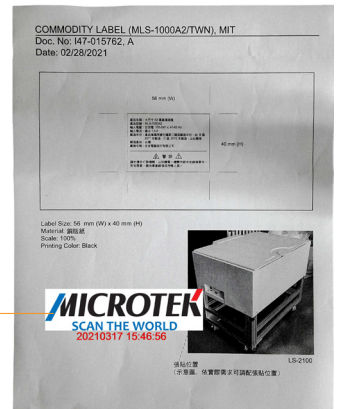
To activate the function, click the “Mark” button to enable the WaterMark window first.



When “Add WaterMark” option is checked, customized watermarks will be added into the captured image.

There are two types of watermarks, Text and Image. Select the type of watermark you want to use in the “MarkType” options menu; then, set up the attributes of the watermark by using the options offered in the displayed window. When done, click the “Apply” button to carry out the action.

The added watermark



Instant Function Buttons



Instant Printing

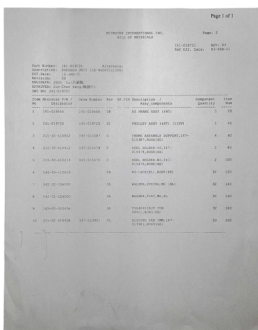
The “Print” function button allows the document camera to work like a copier. Using together with your printer, captured images can be printed out successively without interruptions.

Click the “Print” button to start printing out the captured image.

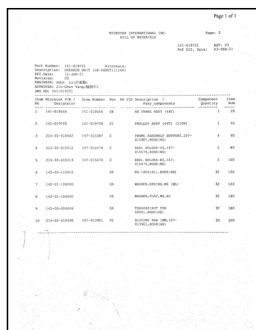


Instant Document

The “Document” function button allows the system to directly remove the background color of captured originals. Click the “Document” button to carry out the function.



Captured without using the Document function



Captured with using the Document function



Instant Barcode Recognition

The “BarCode” function button enables the system to directly identify the barcode on the captured image and then to use it as the file’s name of the captured image. Click the “BarCode” button to carry out the function.



Instant PDF

The “PDF” function button can directly save the captured image as single PDF page. Click the “PDF” button to carry out the function.



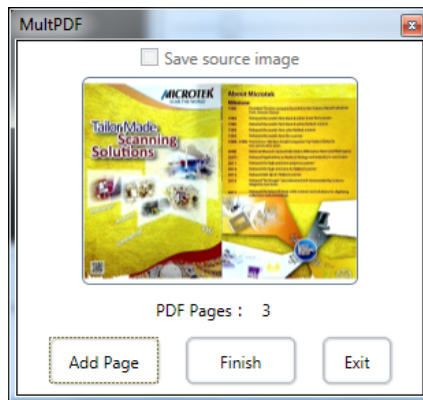
Creating a Multi-page PDF

The “MulPDF” function button can merge all continuously captured images as one PDF file.

To activate the function, click the “MulPDF” button to enable the MulPDF window first.

In the MulPDF window, click the “Add Page” to start a shot of an image. The captured image should be displayed in the window immediately when it is done.

If you like to take a shot of another image, change a new target and then click the “Add Page” button again. Repeat this step until you finish all shots of images.



When done, click the “Finish” button to stop shots. All captured images will be merged and saved as one PDF file. Also, you can find the PDF file in the Thumbnail View window of the interface.

If “Save source image” option is checked, all captured and merged images used for the PDF file will be saved; otherwise, they will be abandoned and only the PDF file will be saved.

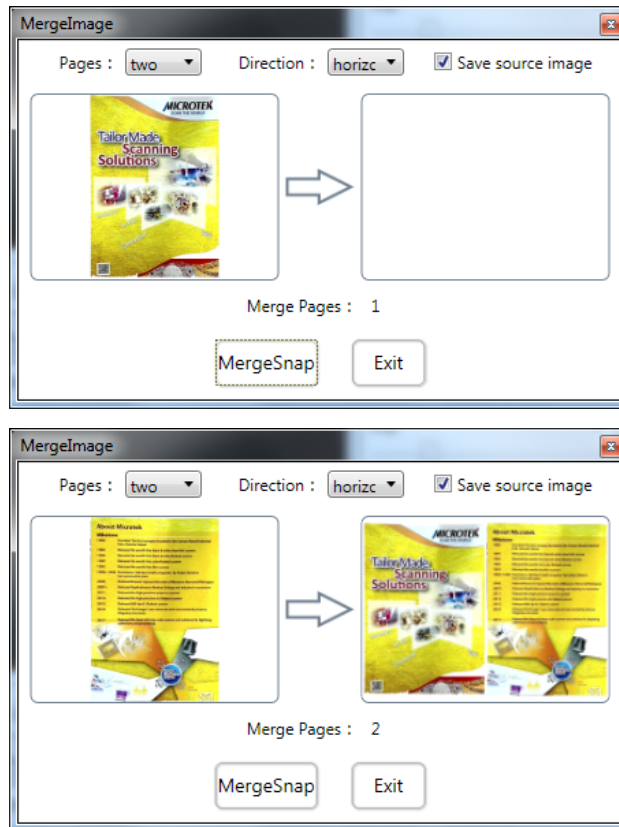


Merging Multiple Images into One Image

The “Merge” function button can combine multiple captured images as one image to save.

To activate the function, click the “Merge” button to enable the MergelImage window first.

In the MergelImage window, set up numbers of pages and directions used for the merged image; then, click the “MergeSnap” button to start shots. The first shot image will appear in the left frame of the window. When done, replace it with a new target and click the “MergeSnap” button again. Repeat this step until finish all shots of images.



The final result will be displayed in the left frame of the MergelImage window and in the Thumbnail View window of the interface.

If “Save source image” option is checked, all captured and merged images used for the final image will be saved; otherwise, they will be abandoned and only the final image will be saved.



ID Card Recognition

By using together with an ID card reader or OCR software, the “IDCard” function button is able to transform and export information of ID cards as editable files, for instance, Excel, and then to save it for further applications.

Please note that some models of document cameras do not support ID card readers.

To activate the function, click the “IDCard” button to enable the IDCard window first.

The screenshot shows a software window titled "IDCard". Inside the window, there is a section labeled "Card Info" which contains several input fields: "Name", "Sex", "Nation", "Born", "Address", and "Number". Below the "Card Info" section, there are two buttons: "Save" and "OpenTable". At the bottom of the window, there are three buttons: "ReadCard", "CardOcr", and "Exit".

- **ReadCard button:** This button can work only when the model of the document camera in use supports ID card readers. To read an ID card, place the ID card at the center of the Black Pad toward the lens; then, click the “ReadCard” button. The ID information will be read and filled into corresponding columns automatically in the window. If needed, click the “OpenTable” button to check relevant information in the exported file.
- **CardOcr button:** Click this button to retrieve and save the information of ID cards through OCR software no matter whether you have an ID card reader or not.



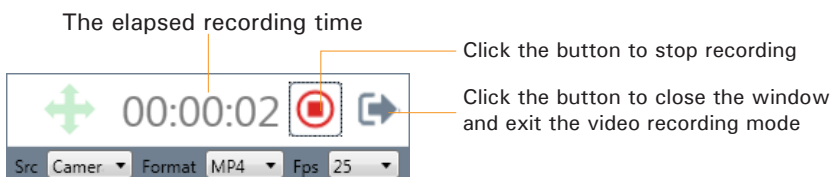
Shooting Video

The “REC” function button allows you to record images captured by a document camera or the images shown on a screen as a video for further applications.

Click the “REC” button to activate the REC window.



In the REC window, select a recording source, Camera or Display, by clicking the “Src” options menu. Choose a preferred video format (AVI, WMV, or MP4) by clicking the “Format” options menu and set up a proper frame rate (5, 10, 15 or 25) by clicking the “Fps” options menu. When done, click the “▶” button to start recording.



The recorded video will be saved in the predefined path and you can watch it by using a video playback software.

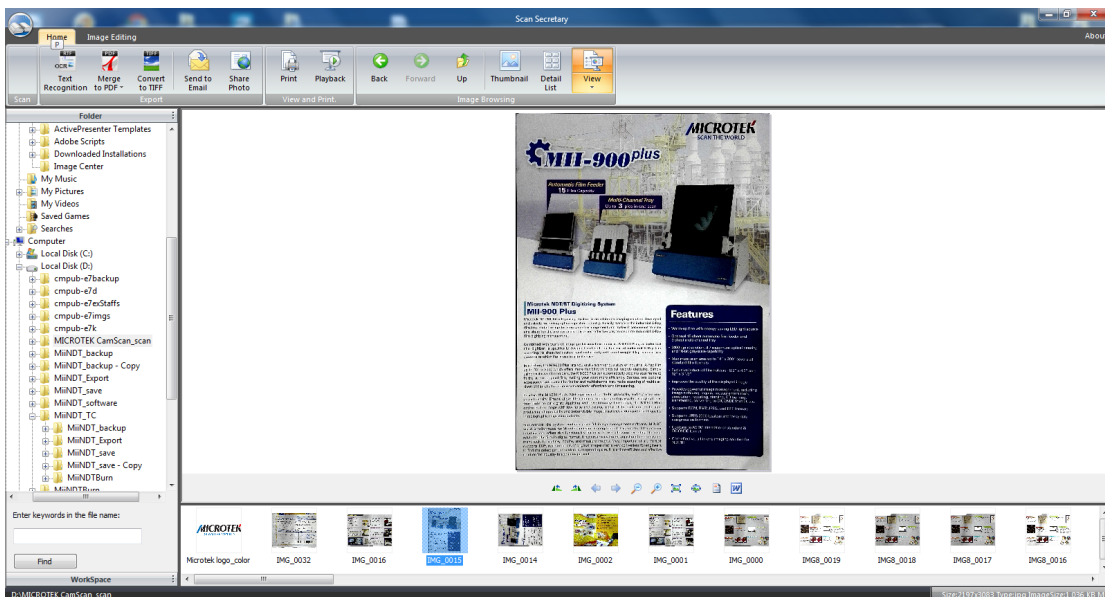


Image Post-processing and Applications

The “Edit” function button allows you to use captured images for further applications, such as file conversions, OCR, sending to E-mail or clouds to share, printing and so on. Of course, you can also directly perform post-processing image effects on these captured images, for instance, rotating, size adjustments, cropping, text adding, color modification and image quality adjustments.

Click the “Edit” button to activate the built-in image editing module. Next start running of the module based on your needs.

Please note that not all document camera models support the functions offered in the Image Editing window. If your document camera does not support this function, it will not work.



Appendix

FAQ and Solutions

1. How can I get a better result when using the delBlackEg tool?

In order to get a better result when using the delBlackEg tool, it is suggested that there should be chromatic aberration between a shooting object and the background. It is recommended that customers should use the supplied Black Pad or optional hard platform when taking shots of documents.

2. What can I do if the document camera cannot be detected by the computer?

- The document camera is not connected with the computer yet; Please connect it with your computer properly.
- The document camera has been connected with the computer; however, it cannot be detected by the computer. If this situation happens, the document camera may be used by another software program. All you need to do is exit the software application or disconnect the document camera. If the document camera cannot be detected by the computer continuously, please use another USB port of the computer to connect the document camera.

3. The document camera has been connected with the computer successfully, but there is no image found in the Preview window.

- Use another USB port of the computer to connect with the document camera.
- Use another USB 2.0 cable to connect the document camera with your computer.
- Uninstall the document camera and re-install the document camera again.
- Update the driver of the USB port.

4. What can I do if a yellow question mark or an exclamation mark appears in image processing devices of Device Manager?

It happens when something goes wrong with the USB driver. What you have to do is update the driver of the USB port.

Specifications of H-Screen 911

Type	Document Camera
Image Sensor	CMOS
Focus	Auto focus
Color Depth	24-bit
Resolution	Still Image: 4000 x 3000 (12 megapixels) Video: 750 x 630 pixels
Shooting Size	A4, A5, A6
Shooting Speed	1 sec/page
Color Mode	Color, grayscale, and black-and-white
Fill Light	6 LEDs
Barcode recognition	1D, 2D
Continuous Shooting	Timed shooting, Smart shooting
Interface	USB 2.0
Transmission Rate	480 mbps
Power Supply	5V, 500mA by USB powered
File Format	Still Image: JPG, BMP, PNG, TIF, PDF Video: AVI, WMV, MP4
OS Support	Windows XP / 7 / 8 / 10
Dimensions	278 x 128 x 306 mm (Unfold) 100 x 128 x 306 mm (Folded)
Net Weight	725 g
Operating Temperature	-20°C ~ +60°C

Specifications of H-Screen 911L

Type	Document Camera
Image Sensor	CMOS
Focus	Auto focus
Color Depth	24-bit
Resolution	Still Image: 4000 x 3000 (12 megapixels) Video: 750 x 630 pixels
Shooting Size	A3, A4, A5, A6
Shooting Speed	1 sec/page
Color Mode	Color, grayscale, and black-and-white
Fill Light	6 LEDs
Barcode recognition	1D, 2D
Continuous Shooting	Timed shooting, Smart shooting
Interface	USB 2.0
Transmission rate	480 mbps
Power Supply	5V, 500mA by USB powered
File Format	Still Image: JPG, BMP, PNG, TIF, PDF Video: AVI, WMV, MP4
OS Support	Windows XP / 7 / 8 / 10
Dimensions	278 x 128 x 406 mm (Unfold) 100 x 128 x 406 mm (Folded)
Net Weight	780 g
Operating Temperature	-20°C ~ +60°C

Specifications of H-Screen 912L

Type	Document Camera
Image Sensor	CMOS
Focus	Auto focus
Color Depth	24-bit
Resolution	Still Image: 4608 x 3456 (16 megapixels) Video: 750 x 630 pixels
Shooting Size	A3, A4, A5, A6
Shooting Speed	1 sec/page
Color Mode	Color, grayscale, and black-and-white
Fill Light	6 LEDs
Barcode recognition	1D, 2D
Continuous Shooting	Timed shooting, Smart shooting
Interface	USB 2.0
Transmission rate	480 mbps
Power Supply	5V, 500mA by USB powered
File Format	Still Image: JPG, BMP, PNG, TIF, PDF Video: AVI, WMV, MP4
OS Support	Windows XP / 7 / 8 / 10
Dimensions	278 x 128 x 392 mm (Unfold) 100 x 128 x 392 mm (Folded)
Net Weight	760 g
Operating Temperature	-20°C ~ +60°C