

# Start Here

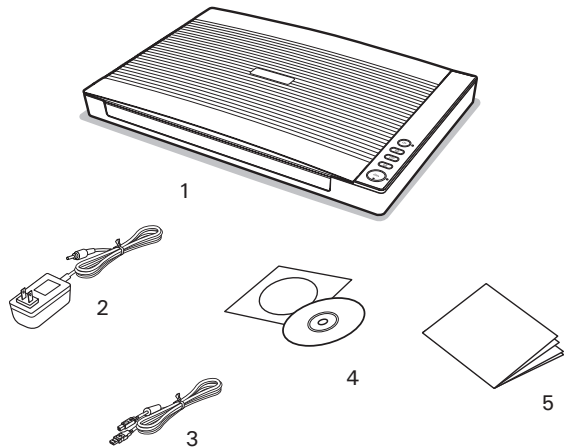
## ▼ Installing your Microtek XT5750 HS

### Step 1

### Unpack Contents

Unpack your scanner package and check for major components.

1. XT5750 HS Scanner
2. Power adapter
3. Hi-Speed USB cable
4. Software CDs/DVDs
5. Start Here guide



### Step 2

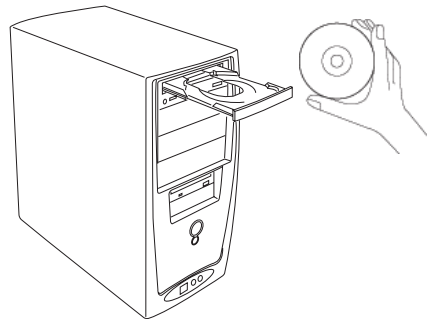
### Install Software

**Important:** You must install software before connecting your scanner.

Always close any open programs and turn off Anti-virus utilities before installing software.

- A. Turn on your computer.
- B. Place the Microtek Software CD/DVD into a drive, and follow the on-screen instructions to install the scanner driver and software.
- C. Restart your computer at the end of all software installation.

**NOTE:** If the Microtek Software Installer screen does not come up automatically, double-click the following in succession: "My Computer"; the CD/DVD-ROM icon; then `cdsetup.exe` to start the installer program.

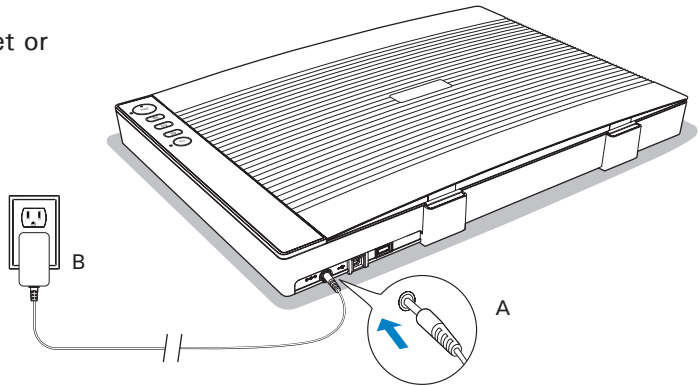


# Step 3

## Connect Scanner

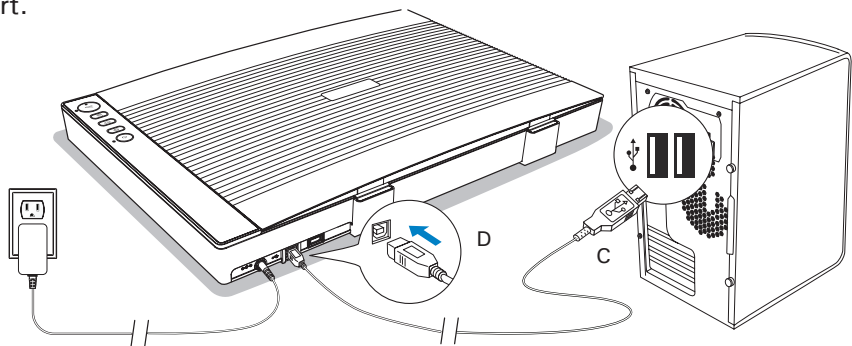
### To the power adapter


- Connect one end of the power adapter to the back of the scanner.
- Plug the other end of the power adapter into a wall outlet or other power source.



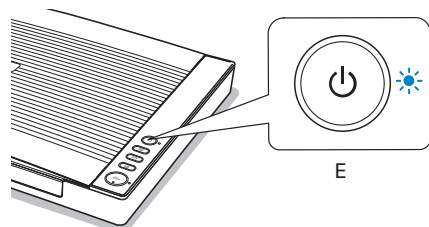
### To the Hi-Speed USB cable

- Connect one end of the Hi-Speed USB cable to your computer.
- Connect the other end of the Hi-Speed USB cable to the scanner's USB port.



- Press and hold the Power button (  ) until the POWER indicator becomes blue.

Once the system detects the scanner, the scanner is ready to scan.

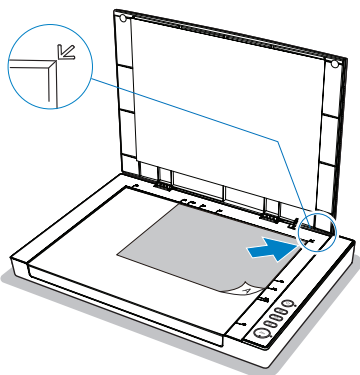


## Positioning Documents

1. Raise the scanner lid.
2. Place the document to be scanned face down on the glass surface of the scanner.
3. Lower the scanner lid.

### Position a single-sheet document:

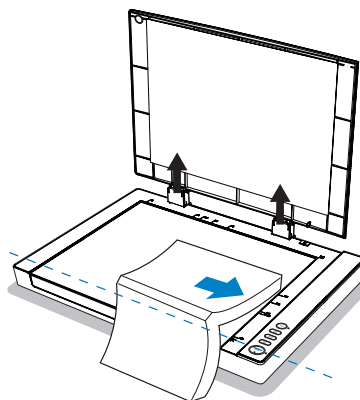
Align the top corner of the document with the arrow mark (↖) located at the upper-right corner of the scan bed, with its edges firmly against the rulers.



### Position a book or a bound document:

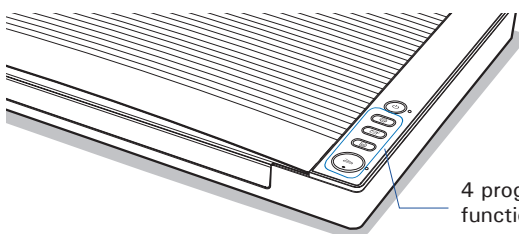
Align the spine or inner edge of the book with the arrow icon (↗) located at the lower right corner of the scan bed and along the dotted line shown as picture.

If necessary, lift the scanner lid straight up or remove it from the hinges when scanning a thick book.



## Customize the Function Buttons

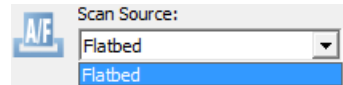
The XT5750 HS scanner is equipped with 4 physical function buttons that can be customized to automate a number of predefined operations, such as scanning to a file, sending an image to your printer or e-mail account, scanning for OCR, etc. Customizing is done through the *Scanner Button Settings* interface in the ScanWizard DI, refer to the scanner's User's Manual for more details.



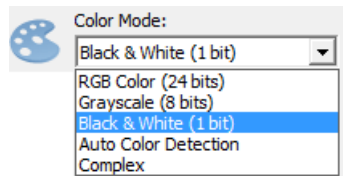
# Scanning Documents

1. Place the document to be scanned facing down on the scanner's glass surface.
2. Launch ScanWizard DI as a stand-alone program by clicking on the *ScanWizard DI* icon on the desktop.
3. Click the *Scan Setup* button in the interface to activate the Scan Setup interface.
4. In the Scan Setup interface, follow the steps below to specify your basic settings.

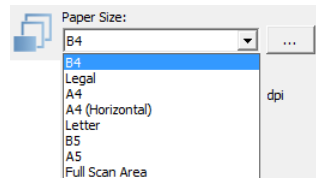
- a) Select *Flatbed* in the *Scan Source* as your image input device.



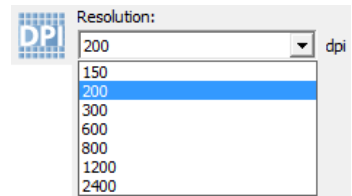
- b) Select the appropriate image type in the *Color Mode* as your image output type.



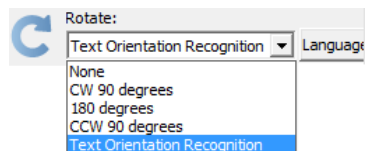
- c) Select a dimension in the *Paper Size* as your preview image size.



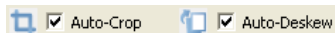
- d) Select a desired resolution in the *Resolution* for your image output resolution.



- e) If necessary, select "Text Orientation Recognition" in the Rotate to ensure the scanned images in a readable orientation. When it is selected, you can select the preferred language used as an identification in the options menu.

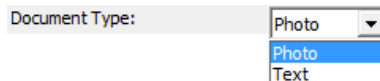


- f) If "Auto-crop" & "Auto-deskew" are selected, the scanner automatically detects the size of the original image, crops the full scan frame to fit the image, and removes unwanted black borders after the scan, as well as corrects the distorted image for proper alignment.



5. Click the *Show Preview Window* and *Show Setting Window* tabs in the Scan Setup interface to display other interfaces which are helpful for your scanning processing.
6. Click the *Preview* button to perform a preliminary view of the entire image. When done, a preview image appears in the Preview window.
7. Go to the "General" panel by clicking the *General* tab in the Settings window. Specify the settings for your requirements there.
  - a) Select the image type in the *Document Type* as your input image type.

– Select *Photo* to scan color prints.



– Select *Text* to scan text.

- b) If necessary, check "Remove Blank Page" and "Remove Punch Hole" to enhance the quality of the scanned images.

8. If necessary, go to the "Image Process" panel by clicking the *Image Process* tab in the Settings window.

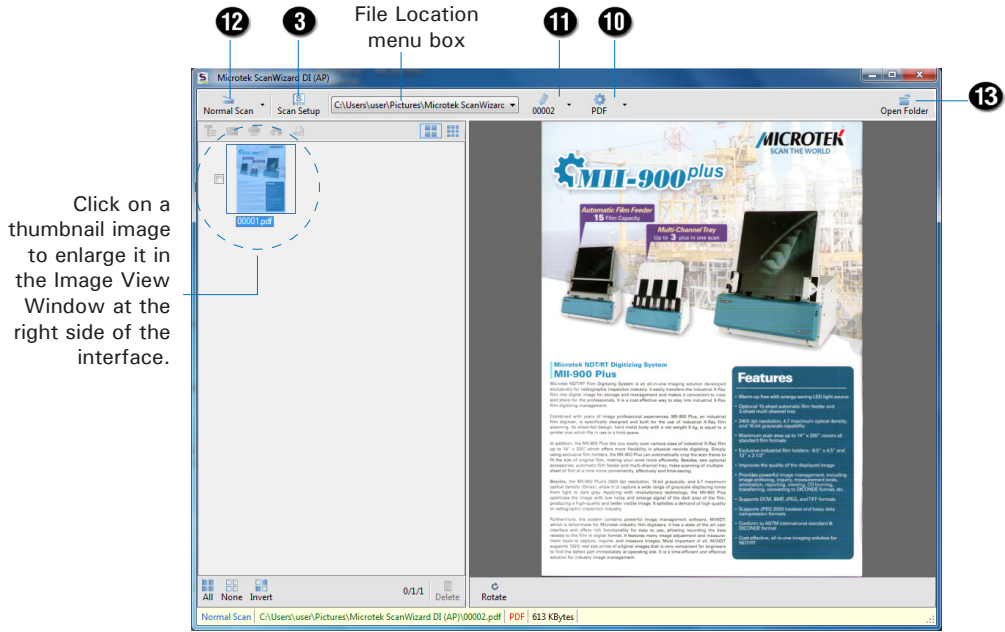
Use the image correction tools presented there to enhance the image quality according to your specific requirements.

9. Click the *OK* button to close the Scan Setup interface and return to the Main interface of ScanWizard DI.
10. In the Main interface, click the *File Format* menu button to select a file format for the scanned images.
11. In the Main interface, click the *File Name* menu button to specify a file naming method for the scanned images.
12. In the Main interface, click the *Normal Scan* button to start scanning.

When done, the scanned images will be automatically saved into the folder defined in the File Location menu box. At the same time, the scanned images will be displayed in thumbnail sizes in the Thumbnail View window and labeled with the file name and file format specified earlier.

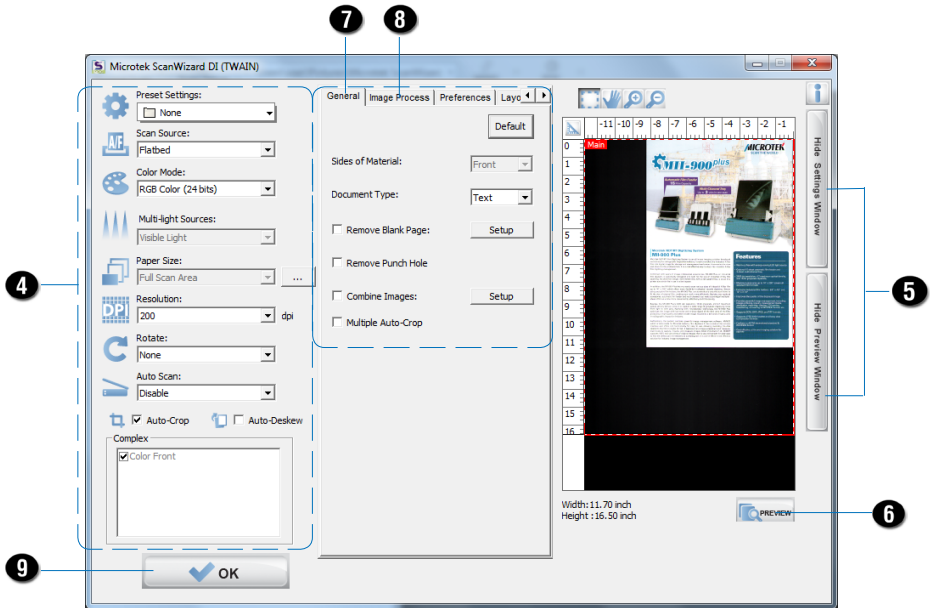
13. Click the *Open Folder* button to locate the scanned images if you want to view.

**NOTE:** For more details on other scanning scenarios applicable to your scanner, refer to the scanner's User's Manual in the Microtek Software CD/DVD.



Click on a thumbnail image to enlarge it in the Image View Window at the right side of the interface.

AP control panel (Main interface)

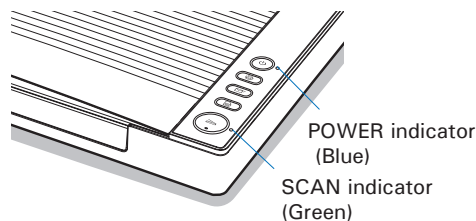


TWAIN driver control panel (Scan Setup interface)

## Problems?

The LED indicators on the button panel of the scanner indicate different states of the scanner. The POWER indicator stands for power and should always stay on steady when the scanner is on.

- ○ **Blue On** - Ready to scan
- ● **Green Flashing** - Scanning
- ● **Red On** - Error
- ○ **All Off** - Scanner is off



First, make sure that you have followed Steps 1 to 3 as described in this guide (unpack, install, connect). Then if your problem is listed here, try the suggested solution.

**1. No light comes on when the scanner is turned on.**

Make sure your scanner is connected to your computer and plugged into a power source.

Press and hold the Power button until the POWER indicator becomes blue.

**2. The Add/Remove Hardware Wizard appears on your screen.**

Click the "Cancel" button and close the ScanWizard DI software.

Disconnect the USB cable from your computer, and refer to the installation instructions in this guide or the scanner's User's Manual.

**3. When trying to scan, an error message appears on your screen that reads, "Can't Find Scanners".**

Make sure your scanner is connected to your computer and plugged in to a power source.

Uninstall and reinstall the ScanWizard DI software.

**4. When trying to scan, an error message "Code: -1000, No response from scanner" appears on your screen.**

Make sure that the POWER indicator has become blue. If not, press and hold the Power button until the POWER indicator becomes blue.

**5. After clicking scan, a blank screen appears.**

Uninstall and reinstall the ScanWizard DI software.

## Do You Need Assistance?

### Manuals

If you have additional questions and need further instruction or information, we provide electronic manuals for:

1. Using your XT5750 HS Scanner (User's Manual)
2. Using the ScanWizard DI scanning software (Reference Manual)

To access the electronic manuals: Insert the scanner's software CD/DVD into your computer's CD/DVD-ROM drive. Next, locate and click the "Manuals" option when the software installer window appears on your screen. Finally, select and click the title of the manual you wish to view.

### Missing Items

If your package is missing items, please call the Microtek Customer Service Department.

### Drivers & Software Upgrades

After you finish the installation of software, if you found that the installed drivers and software cannot run your product or your computer system properly later, please go to the Microtek Download Service site at [microtek.com/en/download](http://microtek.com/en/download) to download and install any updates you may require.

For additional information about Microtek products, please visit our website at [www.microtek.com](http://www.microtek.com).

#### Power Adapter

Use only power supplies (AC/DC adapters) listed below:

Voltage	Manufacturer	Model No.
AC100V to 240V	KUANTEN	KT241120200EU
AC100V to 240V	KUANTEN	KT241120200US

**NOTE:** Please make sure that the electrical outlet to where the scanner will be connected is nearby and readily accessible.

Copyright © 2021 Microtek. Microtek, ScanMaker, ArtixScan, ScanWizard and ColoRescue are trademarks or registered trademarks of Microtek International, Inc. All other trademarks or registered trademarks are the property of their respective holders. Specifications, software and hardware bundles are subject to change without notice. Delivery of technical support services subject to change without notice. Not responsible for typographical errors.

