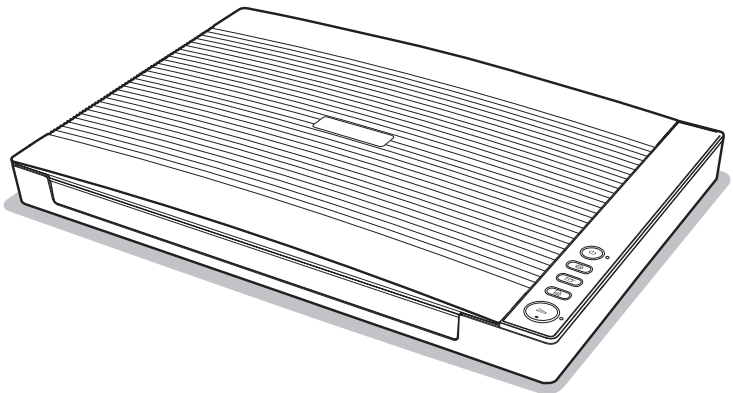


MICROTEK

Document Imaging
Scanner

XT5750 HS

User's Manual



Preface

Copyright

Copyright © 2023, Microtek International, Inc., all rights reserved. This document may not be reproduced or copied in any way, stored electronically, or translated into any language, without the permission of Microtek International, Inc.

Trademarks

Microtek, ScanMaker, ArtixScan, ScanWizard and ColoRescue are trademarks or registered trademarks of Microtek International, Inc. All other trademarks or registered trademarks are the property of their respective holders. Specifications, software and hardware bundles are subject to change without notice. Not responsible for typographical errors.

Disclaimer

The contents of this manual have been checked carefully for accuracy, and every effort has been made to ensure that there are no errors. However, Microtek makes no guarantee as to the accuracy of the contents of this document and reserves the right to make changes to the contents without prior warning.

I49-005390, B
May 2023

Microtek International, Inc.
No. 6, Industry East Road 3, Hsinchu Science Park, Hsinchu 30075, Taiwan
Tel: 886-3-5772155, Fax: 886-3-5772598, <https://www.microtek.com>

Safety Precautions

Before using your scanner, read the following safety guides carefully, which detail the proper operation of the scanner and its accessories to prevent injuries or damage to users or equipment.

Power Source and AC Power Supply:

- Use a power source only with a power rating specified on the marking label.
- Insert the plug completely into the power outlet, as a loose connection may cause arcing and result in fire.
- Place and route the power supply such that it is not likely to be walked on or pinched by items placed upon or against them, paying particular attention to the cord near the power plugs, convenience receptacles, and at the point where it exits from the outlet.
- When the scanner is left unattended and unused for long periods of time, unplug it from the power outlet.

Moving and Storing the Scanner:

- Do not place the scanner on any slippery, slanted, or unstable surface. The product may slide or fall, causing serious injury to people as well as serious damage to the product.
- Do not use this scanner near water. Never spill liquid of any kinds on the product, or it may result in electric shock or other hazards.
- This scanner should be situated away from heat sources such as radiators, heat registers, stoves, or other products (including amplifiers) that produce heat.

Service:

- When you need a repair service, turn the scanner power off and unplug the scanner from the power outlet . Then, consult qualified service personnel.
- When replacement parts are required, use replacement parts that are specified by the manufacturer or have the same characteristics as the original parts.

Table of Contents

Preface	2
Safety Precautions	3
Knowing about Your Scanner.....	7
Features of Your Scanner	7
Installation Requirements	9
Taking a Closer Look	10
Front/Open View.....	10
Back View.....	11
Initial Setup	12
Step 1: Unpacking Package Contents	12
Step 2: Installing the Software.....	13
Step 3: Connecting the Scanner.....	14
To the Power Adapter	14
To the Hi-Speed USB Cable	14
Positioning Documents	16
Notes for the Scan Area.....	16
Scanning Scenarios	18
Using ScanWizard DI	18
Scanning Documents.....	18
Scanning Documents with Barcodes	22
Scanning Documents Automatically.....	24
Scanning and Auto-Cropping Multiple Pictures	27
Scanning a Book	29
Scanning Documents from an Application	32
Utilizing Scanned Documents	33
Scanning for OCR	33
Scanning for E-mail	35
Scanning for Copying	36
Scanning to Cloud.....	37
Scanning to Text-to-Speech (TTS).....	38

Scanner Button	40
Starting up the Scanner Button Settings Interface	41
Customizing the Scanner Button	42
How the Scanner Button Works	43
Care and Cleaning	44
Cleaning the Scanner Glass Surface.....	44
Appendix	45
Troubleshooting	45
Other Troubleshooting	46
Specifications	49

Knowing about Your Scanner

The XT5750 HS is an A3-size scanner with high scanning speed. Equipped with a narrow boundary scan bed, 1200-dpi CIS sensor, an A3-size scan bed and ready-to-use LED light source, the XT5750 HS is perfect to serve various digitizing needs in daily life. Besides, more features, such as 4-seconds to scan an A3-size original, covering the lid to start an auto scan, auto cropping of multiple images at one time and smart-touch function buttons, of the XT5750 HS makes it indispensable for an efficient and convenient working environment.

Features of Your Scanner

The scanner comes with several important features, including the following:

- 1200-dpi CIS sensor — A built-in CIS sensor can provides the XT5750 HS with 1200 dip resolutions, efficient for supporting daily office scanning jobs. Besides, a CIS only occupies small volume of space and thus enables the design of a scanner more compact.
- Large A3-size scan bed — The XT5750 HS is equipped with a large-size scan bed, supporting a scan size up to 304 x 426 mm. Thus, there are no more difficulties to scan extra-size originals, pictures or blueprints.
- Ultra-fast scanning — At the setting of 200 dpi, it only takes the XT5750 HS 4 seconds to finish a scan of an A3 original in color. Its fast scanning speed doubles the work efficiency without any doubts.
- Automatic scanning — Equipped with a scanner lid detection sensor, the scanner will start scanning automatically once the scanner lid closing on the scan bed is detected by the sensor. You don't have to press any button.
- Unique frameless and narrow boundary design— With this design, the scan bed can be absolutely flat and the scanned original can be slid out easily from the scan bed when done. Also, it can easily eliminates the problem of scanning bound pages with text and pictures close to the inner margin of a book or magazine, guaranteeing blurs and distortions free. Besides, when scanning an over-sized original, the scanner lid will not generate indentations over it.
- Removable scanner lid — The lid of the XT5750 HS is supported with two movable hinges, allowing users to remove the lid easily from the scanner when scanning thicker or larger originals.
- Smart-touch function buttons — Four physical buttons on the scanner panel provide you a quick and easy way to launch frequently used scanner functions. All you need to do is simply press a button and the corresponding function can be carried out, such as scan to a file, scan to print, scan to OCR and scan to E-mail. They enables the beginner to become a scan professional in just seconds.

- Energy-saving LED light source — Adopting LEDs as the light source, once the scanner is detected by the system, there is no warm-up time in need before carrying out the scan, which boosts your productivity and reduces energy costs amazingly. With its stable performance, the image quality will remain consistent even after used for a certain period of time.
- Auto-crop multiple images — This feature allows the scanner to crop and extract multiple images from one scan at once automatically. This function is quite useful if you have a need to separate each image from a scan of multiple images.
- New and Advanced Microtek ScanWizard DI software — ScanWizard DI offers a host of features and image adjustment controls for scanning. Its distinctive features include:
 - Text Orientation Recognition — With this feature, the scanner automatically rotates every saved files in a readable direction based on a specific OCR language selected.
 - Smart Threshold — This feature enables the software to specify the best level for a threshold used in high-contrast and black-and-white images automatically, improving the clearance and readability of black-and-white documents.
 - Combine Images — This feature enables the software to merge two separate images as one united image. With this function, you do not need other after-scan editing program to modify your scanned documents.
 - Remove Blank Page — With this feature, blank pages are automatically detected and removed by the software when scanning a stack of documents. This function is quite helpful especially when users are scanning double-sided documents and some of the pages only have text on the front side.
 - Remove Punch Hole — With this feature, the software automatically detects the location of the punch holes on the scanned documents and fills them in color. This function works for most common hole puncher standards.
 - Save multiple images as a single file : This advanced feature allows user to save multiple scanned images as a single file, depending on the number of the scanned images that are defined for document archival.
 - Auto-crop and auto-deskew : The auto-crop function automatically detects the size of the original image, crops the full scan frame to fit the image, and removes unwanted black borders. The auto-deskew function automatically corrects distorted images for proper alignment.
 - Color dropout: When processing documents with color backgrounds, the feature can drop out red, green or blue colors for better and clearer readability.

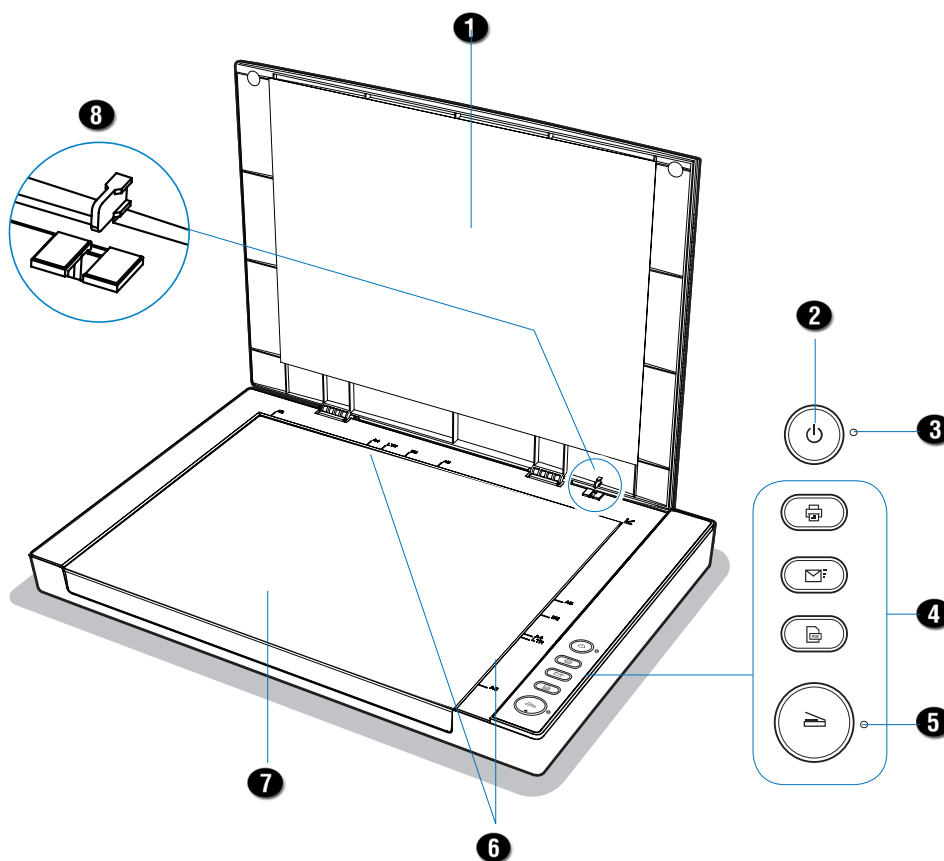
Installation Requirements

In order to use your scanner, your computer must satisfy the following system requirements:

- DVD-ROM drive (for installing software)
- Color display with 24-bit color output capability
- 2GB RAM or more (4GB is recommended)
- Intel Core i3 processor PC or higher with a built-in USB port
- Windows 7 / 8 / 10/ 11

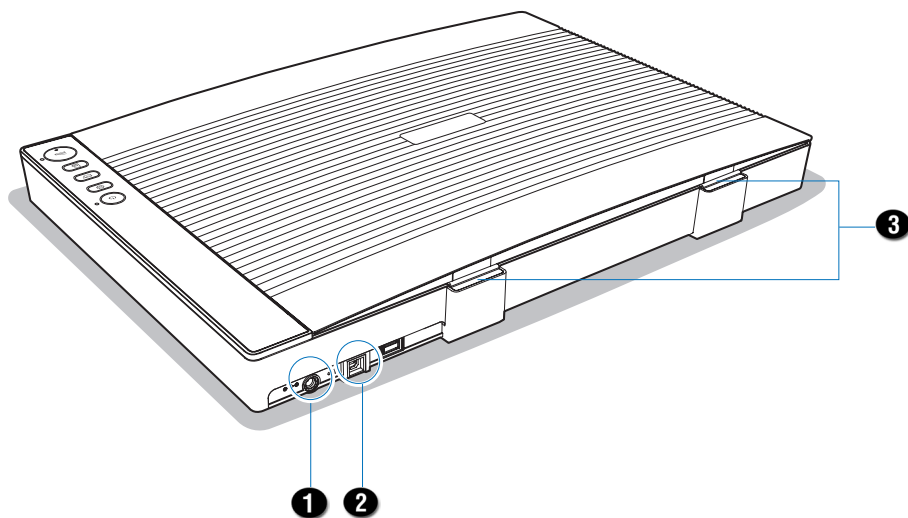
Taking a Closer Look

Front/Open View



No.	Names of Parts	Functions of Parts
1	Scanner Lid	Used to cover the document to be scanned.
2	Power Button	Turns the scanner on or off.
3	POWER Indicator	Indicates that the scanner is on or off. Lights blue: Indicates that the scanner is powered on.
4	Programmable Function Buttons	Starts a scan job immediately based the settings configured in the Scanner Button Settings interface.
5	SCAN Indicator	Flashing green: Indicates that the scanner is scanning. Lights red: Indicates that the scanner is disconnected.
6	Rulers	Measures for different scales of paper sizes.
7	Glass Surface	The scan bed for placing the document to be scanned.
8	Cover Sensor	Detects whether the scanner lid is closed.

Back View



No.	Names of Parts	Functions of Parts
1	Power Connector	Connects the scanner to the power adapter.
2	Hi-Speed USB Port (USB 2.0)	Connects the Hi-Speed USB cable to the computer.
3	Cover Supports	Used to support or lift the scanner lid up.

Initial Setup

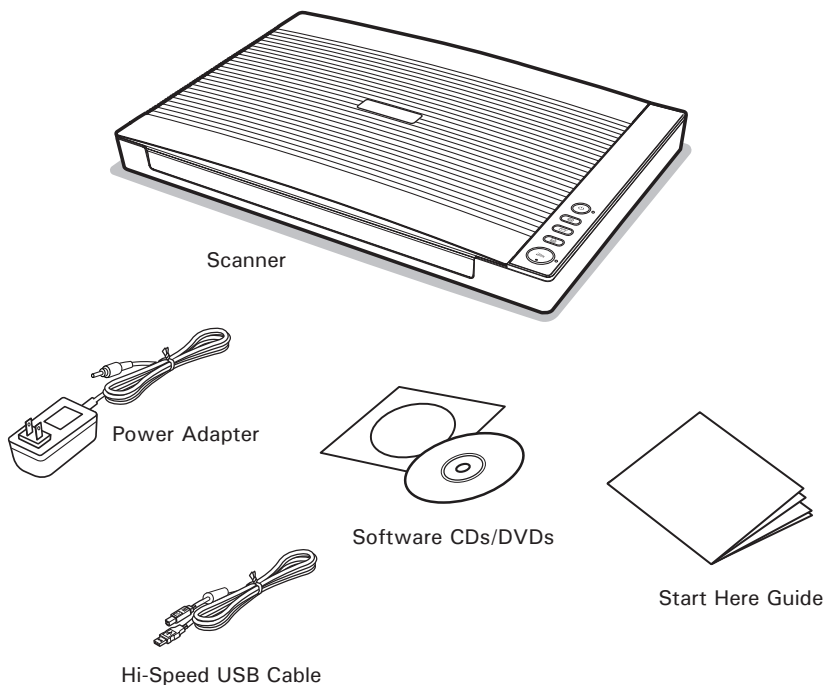
After unpacking your scanner package, follow the steps below for a quick and easy installation process.

NOTE:

- Be sure to use the power adapter and USB cable came with the scanner package.
- Do not place the scanner on any slippery, slanted, or unstable surface. The scanner may slide or fall, causing serious injury to people as well as severe damage to the scanner.
- Save all packing materials of the scanner, including the outer carton, if you have a need to transport the scanner in the future.

Step 1: Unpacking Package Contents

After unpacking your scanner package, please check for the major components listed below.



Step 2: Installing the Software

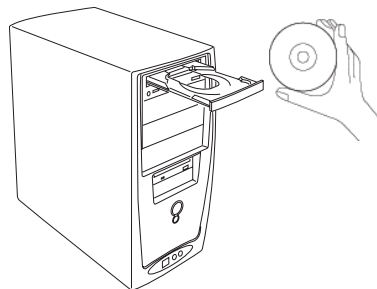
Important: Do not remove the yellow sticker from your scanner until you are told to do so. You must install all software before connecting your scanner.

Always close any open programs and turn off Anti-virus utilities before installing software.

1. Turn on your computer.
2. Place the Microtek Software CD/DVD into a drive.
3. Follow the on-screen instructions to install the driver and software.

NOTE: If the Microtek Software Installer screen does not come up automatically, double-click the following in succession: "My Computer"; the CD/DVD-ROM icon; then *cdsetup.exe* to start the installer program.

4. Click EXIT on the Microtek Software Installer screen when all the software has been installed.
5. Restart your computer.



Drivers & Software Upgrades

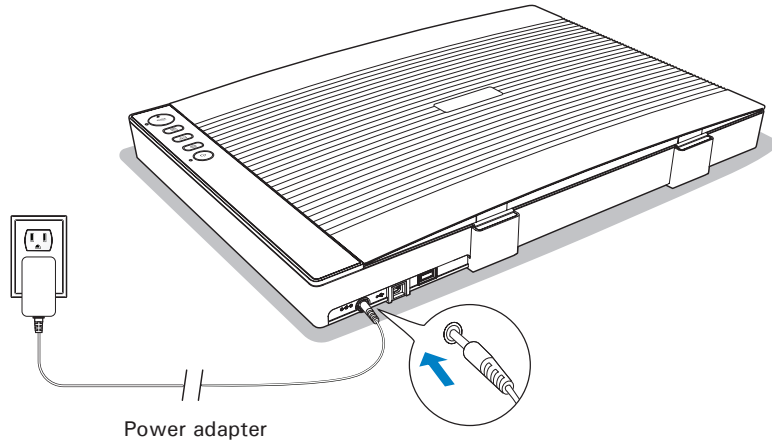
After you finish the installation of software, if you found that the installed drivers and software cannot run your product or your computer system properly later, please go to the Microtek Download Service site at microtek.com/en/download to download and install any updates you may require.

For additional information about Microtek products, please visit our website at www.microtek.com.

Step 3: Connecting the Scanner

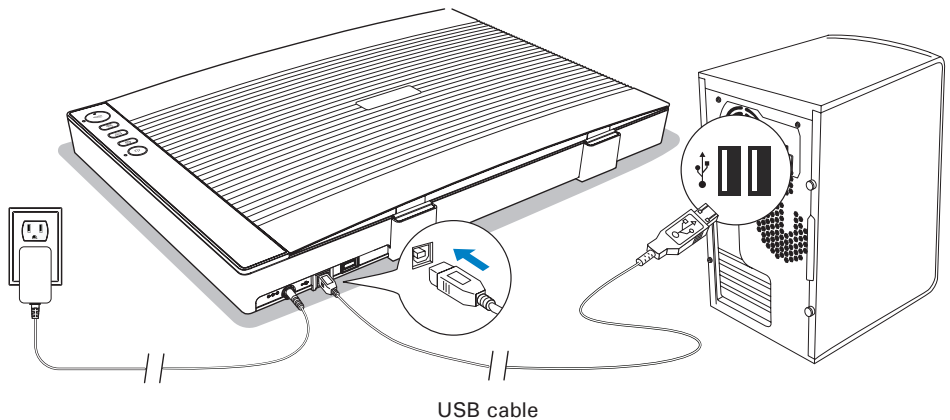
To the Power Adapter


1. Connect one end of the power adapter to the back of the scanner.
2. Plug the other end of the power adapter into a wall outlet or other power source.

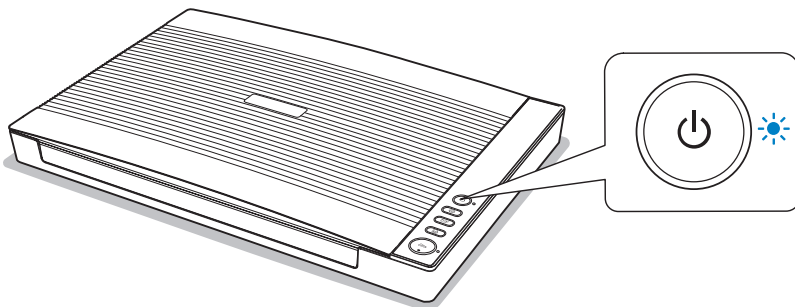


To the Hi-Speed USB Cable

3. Connect one end of the Hi-Speed USB cable to your computer.
4. Connect the other end of the Hi-Speed USB cable to the scanner's USB port.



5. Press and hold the Power button () until the POWER indicator becomes blue.
 - . Once the system detects the scanner, the scanner is ready to scan.



NOTE:

- To turn the scanner off, press and hold the Power button until the POWER indicator (blue) is put out.
- If the scanner is idle for a period of time (about 15 minutes), the POWER indicator (blue) will go off and the scanner is automatically shut down.

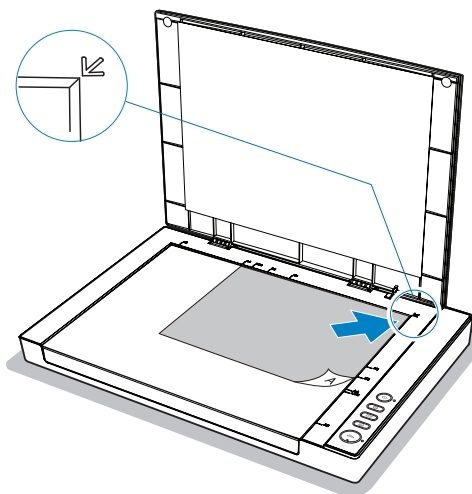
To switch off the Auto Shutdown Mode, please go to the Scan Setup interface > Messages (i) > Energy Saving Settings, and then uncheck the "Enable the Auto Shutdown Mode" option.

Positioning Documents

This section shows you how to position documents, such as contact sheets, large pieces of art mechanical blueprints and a thick book on the flatbed.

Positioning a Single-Sheet Document

1. Raise the scanner lid, and place the document to be scanned face down on the glass surface of the scanner.
2. Align the top corner of the document with the arrow mark (↖) located at the upper-right corner of the scan bed, with its edges firmly against the rulers.
3. Then, lower the scanner lid.

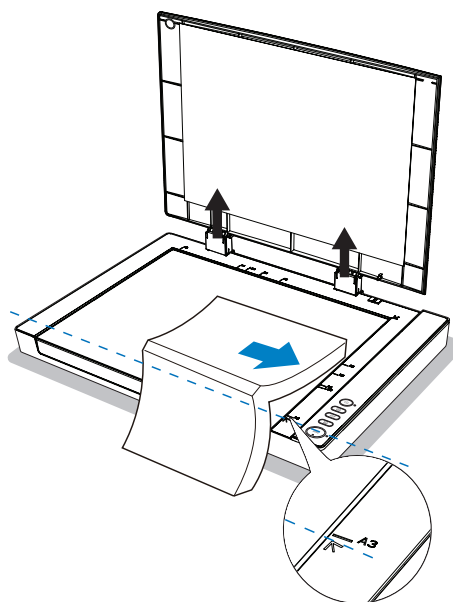


Positioning a Book or a Bound Document

1. Raise the scanner lid, and place a book to be scanned face down on the glass surface of the scanner.
2. Align the spine or inner edge of the book with the arrow icon (↖) located at the lower right corner of the scan bed and along the dotted line shown as picture.

If necessary, lift the scanner lid straight up or remove it from the hinges when scanning a thick book.

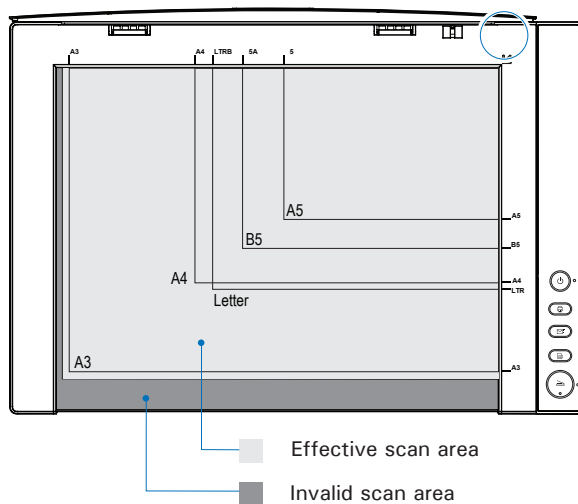
3. Then, lower the scanner lid.



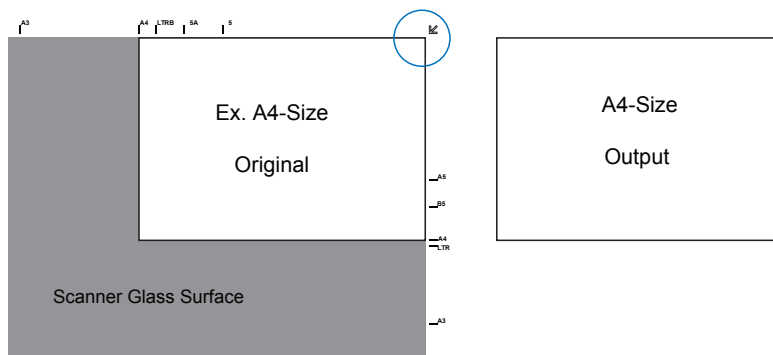
NOTE: Do not place heavy items on the scanner's glass surface or press on the glass surface with too much force as this will cause damage to the glass surface.

Notes for the Scan Area

- The maximum supported area of the scanner for scanning is 426 x 304 mm, as shown in the graphic. If the document is placed beyond this area, the part that exceeds this area will not be scanned.



- In order to make the correct scan and crop a selected paper size, please always place the document facing down on the glass surface of the scanner, and align the top corner of the document with the arrow mark (↖).



Scanning Scenarios

Using ScanWizard DI

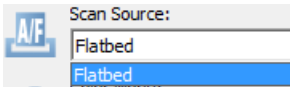
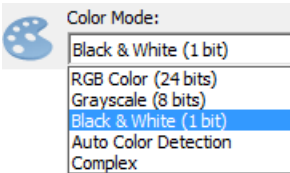
ScanWizard DI is a scanning software designed by Microtek for document scanning in color, black and white, and grayscale. Its user-friendly interface enables you to easily start the scanning process. Refer to the ScanWizard DI Reference Manual for more details.

Warning:

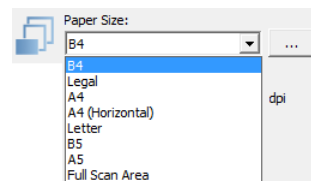
- Before using the ScanWizard DI, make sure that your anti-virus software program has been turned off. Otherwise, the scanning speed may be affected.

The following sections will show you step by step how to use ScanWizard DI.

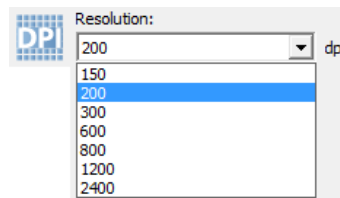
Scanning Documents

1. Place the document to be scanned facing down on the scanner's glass surface.
2. Launch ScanWizard DI as a stand-alone program by clicking on the *ScanWizard DI* icon on the desktop.
3. Click the *Scan Setup* button in the interface to activate the Scan Setup interface.
4. In the Scan Setup interface, follow the steps below to specify your basic settings.
 - a) Select *Flatbed* in the Scan Source as your image input device.
 
 - b) Select the appropriate image type in the *Color Mode* as your image output type.
 - Select *RGB Color (24 bits)* to scan the image in color.
 - Select *Grayscale (8 bits)* to scan the image in grayscale.
 - Select *Black & White (1 bit)* to scan the image in black-and-white.
 - Select *Auto Color Detection* to scan the image in color or non-color based on the automatic judgement and detection of the system.
 - Select *Complex* to scan the image in color, grayscale or non-color based on the customized selections.

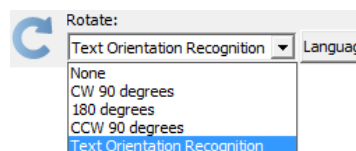
- c) Select a dimension in the *Paper Size* as your preview image size.



- d) Select a desired resolution in the *Resolution* for your image output resolution.



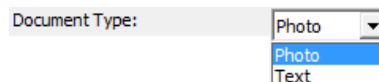
- e) If necessary, select “Text Orientation Recognition” in the Rotate to ensure the scanned images in a readable orientation. When it is selected, you can select the preferred language used as an identification in the options menu



- f) If “Auto-Crop” & “Auto-Deskew” is selected, the scanner automatically detects the size of the original image, crops the full scan frame to fit the image, and removes unwanted black borders after the scan, as well as corrects the distorted image for proper alignment.



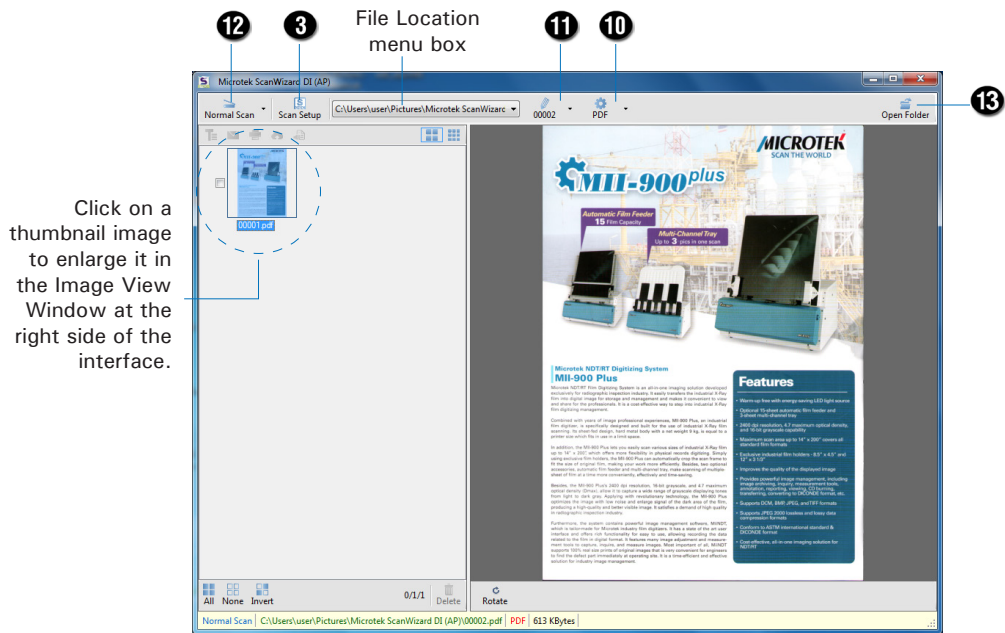
5. Click the *Show Preview Window* and *Show Setting Window* tabs in the Scan Setup interface to display other interfaces which are helpful for your scanning processing.
6. Click the *Preview* button to perform a preliminary view of the entire image. When done, a preview image appears in the Preview window.
7. Go to the “General” panel by clicking the *General* tab in the Settings window. Specify the settings for your requirements there.
 - a) Select the image type in the *Document Type* as your input image type.
 - Select *Photo* to scan color prints.
 - Select *Text* to scan text.
8. If necessary, go to the “Image Process” panel by clicking the *Image Process* tab in the Settings window. Use the image correction tools presented there to enhance the image quality according to your specific requirements.



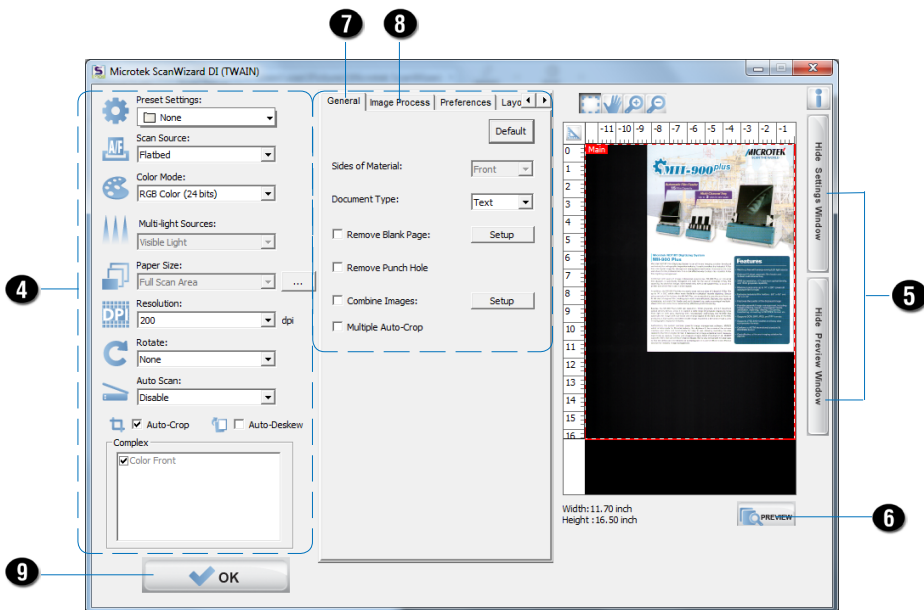
9. Click the *OK* button to close the Scan Setup interface and return to the Main interface of ScanWizard DI.
10. In the Main interface, click the *File Format* menu button to select a file format for the scanned images.
11. In the Main interface, click the *File Name* menu button to specify a file naming method for the scanned images.
12. In the Main interface, select and click the *Normal Scan* button to start scanning.

When done, the scanned images will be automatically saved into the folder defined in the File Location menu box. At the same time, the scanned images will be displayed in thumbnail sizes in the Thumbnail View window and labeled with the file name and file format specified earlier.

13. Click the *Open Folder* button to locate the scanned images if you want to view.



AP control panel (Main interface)

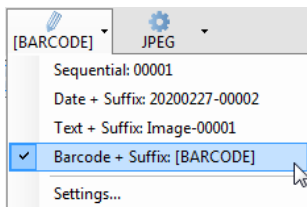


TWAIN driver control panel (Scan Setup interface)

Scanning Documents with Barcodes

This scanning scenario is useful for the documents to be filed with barcode numbers.

1. Place the document to be scanned facing down on the scanner's glass surface.
2. Launch ScanWizard DI as a stand-alone program by clicking on the *ScanWizard DI* icon on the desktop.
3. Click the *Scan Setup* button in the interface to activate the Scan Setup interface.
4. Follow the procedure (steps 4 through 8) for "Scanning Documents" section to specify your scanning requirements in the interface.
5. Click the *OK* button to close the Scan Setup interface and return to the Main interface of ScanWizard DI.
6. In the Main interface, click the *File Format* menu button to select a file format for the scanned images.
7. In the Main interface, click the *File Name* menu button and then select "Barcode + Suffix" from its drop-down menu for the scanned images.

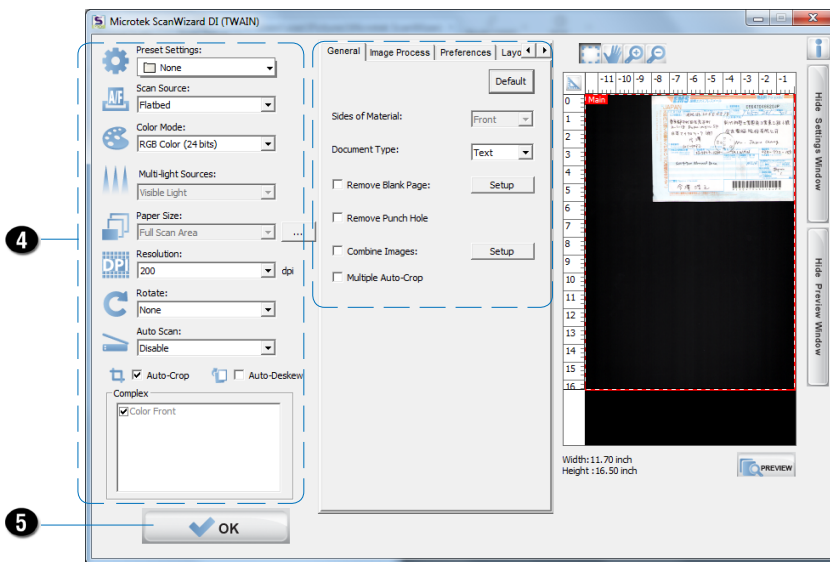
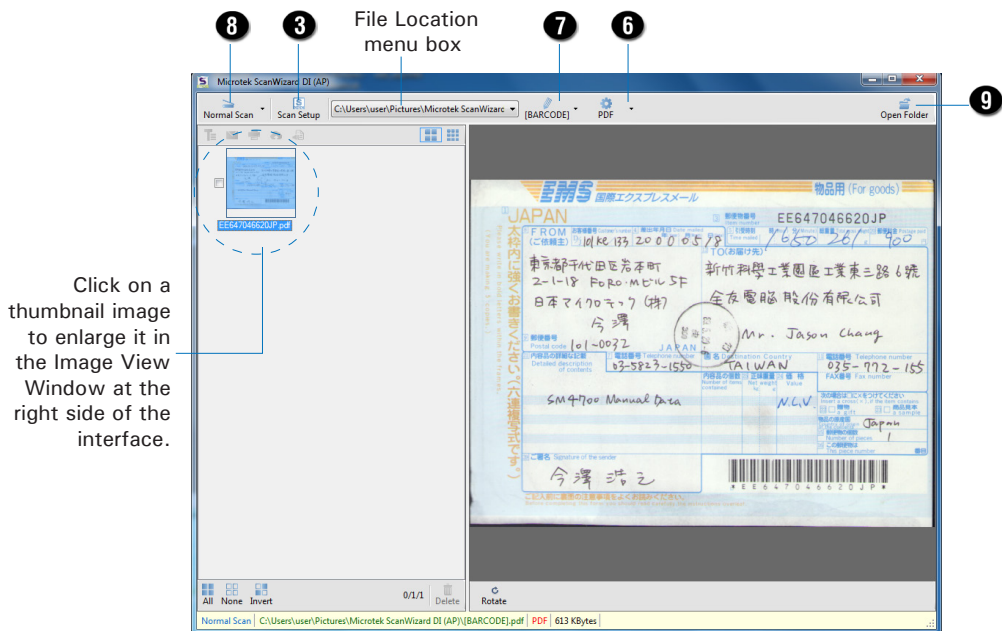


NOTE: If you want to know more about how to deal with documents with barcodes, refer to the ScanWizard DI Reference Manual in the Microtek Software CD/DVD.

8. In the Main interface, select and click the *Normal Scan* button to start scanning.

When done, the scanned images will be automatically saved into the folder defined in the File Location menu box. At the same time, the scanned images will be displayed in thumbnail sizes in the Thumbnail View window and labeled with detected barcode values and chosen file format.

9. Click the *Open Folder* button to locate the scanned images if you want to view.



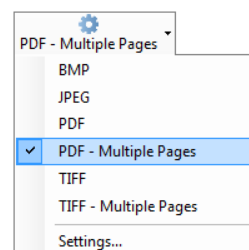
Scanning Documents Automatically

This scanning scenario guides users to perform an automatic scan by using the Auto Cover Detection function. It works only when the scanner is equipped with a lid closing detection sensor

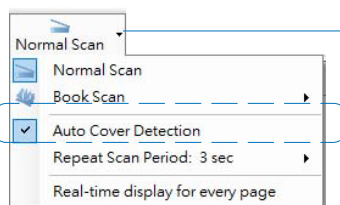
1. Place the document to be scanned facing down on the scanner's glass surface.
2. Launch ScanWizard DI as a stand-alone program by clicking on the *ScanWizard DI* icon on the desktop.
3. Click the *Scan Setup* button in the interface to activate the Scan Setup interface.
 - a) Follow the procedure (steps 4 through 8) for “Scanning Documents” section to specify your scanning requirements in the interface.
 - b) Click the OK button to close the Scan Setup interface and return to the Main interface of ScanWizard DI.

4. In the Main interface, click the *File Name* menu button to select a file format for the scanned images.

If you want to save all scanned pages of your document in one file, please select “PDF-Multiple Pages” or “TIFF-Multiple Pages” from the drop-down options menu.

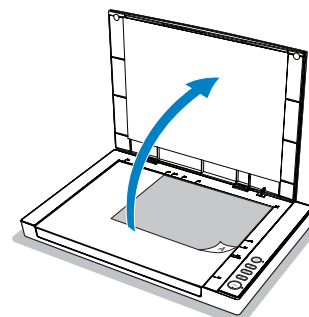


5. Next, enable the Auto Cover Detection function.
 - a) Click the *Arrow* icon next to the Normal Scan button (by default) to bring up the Scan mode options menu.
 - b) Click the “Auto Cover Detection” command in the options menu. A check appears next to the command when it is enabled.



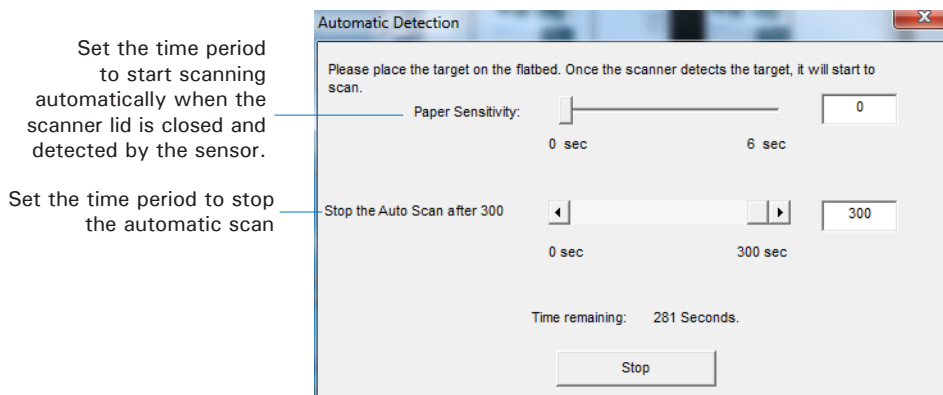
Click the *Arrow* icon to open the Scan mode options menu.

6. Next, perform the automatic document scanning and archiving.
 - a) Raise the scanner lid.



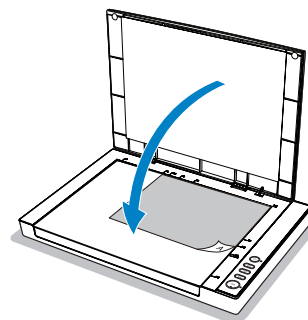
- b) Click the *Normal Scan* button in the Main interface. An “Automatic Detection” window appears on the screen.

If necessary, adjust slider bars to increase/decrease the value of user settings for the “Responding Time” and “Stop the Auto Scan after...” options.



- c) Place the document to be scanned facing down on the scanner's glass surface, and then close the scanner lid.

Once the scanner lid is down and detected by the sensor, the scanner will start scanning automatically based on a predefined Responding Time set up previously.



NOTE: Make sure that scanner lid is closed and fully covers the scan bed; otherwise the automatic scan will not be performed correctly.

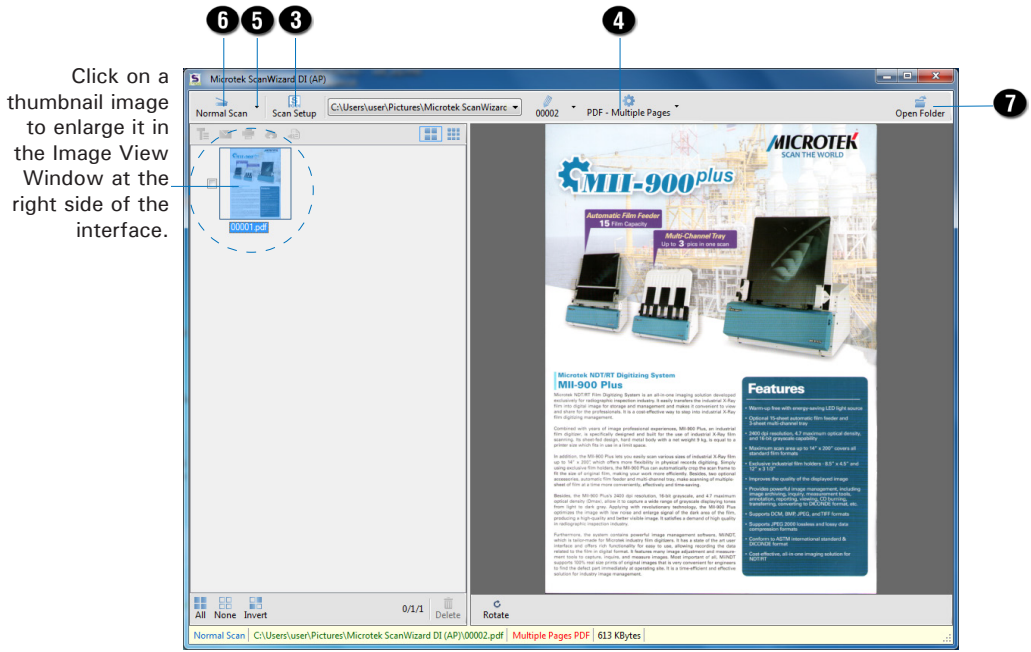
- d) When done, if you want to scan more pages, 1) raise the scanner lid and remove the document; 2) then, place the next document on the scanner's glass surface and close the scanner lid.

If you want to stop the automatic scan task, just click the Stop button to exit the window.

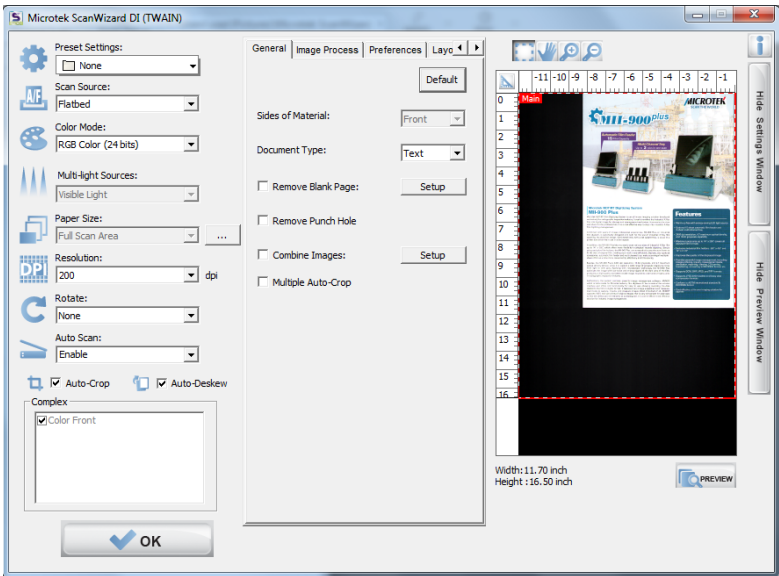
- e) Repeat the step c) until you finish scanning all desired documents.

When done, the scanned images will be automatically saved into the folder defined in the File Location menu box. At the same time, the scanned images will be displayed in thumbnail sizes in the Thumbnail View window and labeled with the chosen file format.

7. Click the *Open Folder* button to locate the scanned images if you want to view.



AP control panel (Main interface)

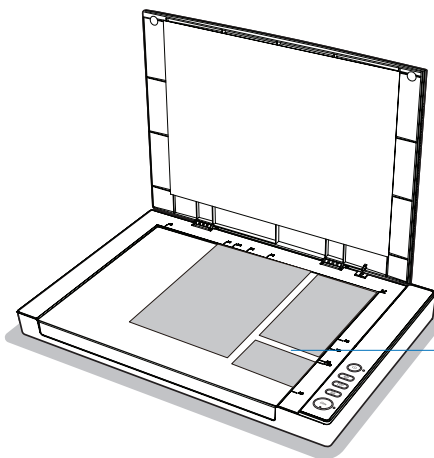


TWAIN driver control panel (Scan Setup interface)

Scanning and Auto-Cropping Multiple Pictures

This scanning scenario guides users to crop and extract multiple pictures from one scan automatically, saving extra time from document scanning

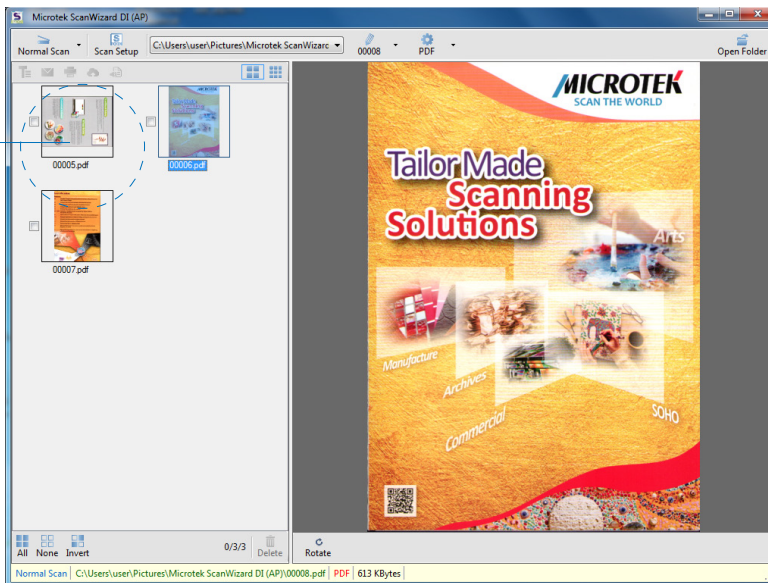
1. Place the multiple originals to be scanned facing down on the scanner's glass surface.



NOTE: Please ensure that there is space between the scanned originals when they are placed on the scanner's glass surface; otherwise, the individual image may not be extracted from one scan correctly after auto-cropping.

2. Launch ScanWizard DI as a stand-alone program by clicking on the *ScanWizard DI* icon on the desktop.
3. Follow the procedure (steps 3 through 13) for "Scanning Documents" section to specify your scanning requirements.
 - In step 4, select "Full Scan Area" in the Paper Size as your preview image size.
And, always check "Multiple Auto-Crop" & "Auto-Deskew".
 - In step 6, click the *Preview* button to perform a preliminary view of the entire scan area.
When done, a preview image containing multiple pictures appears in the Preview window.
 - In step 12, click the *Normal Scan* button to perform a final scan.
When done, the system will crop pictures individually according to the original size of each picture from one scan and save them into the specified folder. At the same time, the individual image thumbnail will also be displayed in the Thumbnail View window.

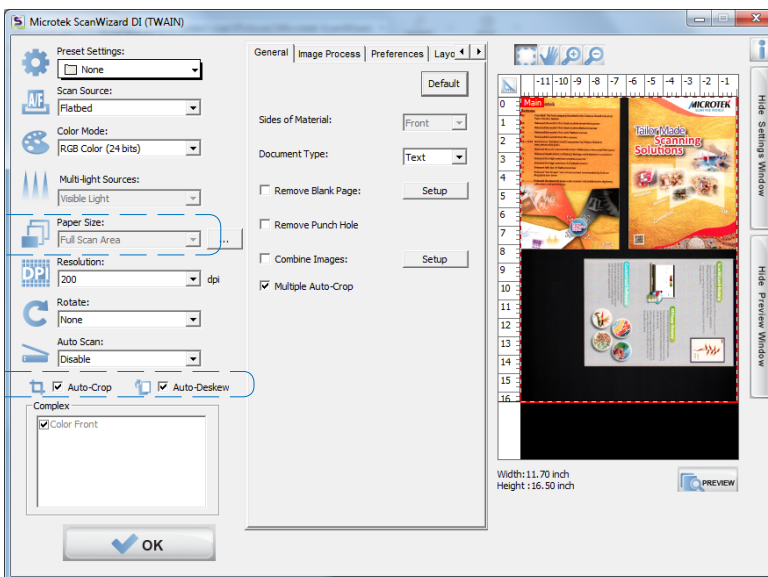
Click on a thumbnail image to enlarge it in the Image View Window at the right side of the interface.



AP control panel (Main interface)

“Full Scan Area” is selected.

“Auto-Crop” & “Auto-Deskew” are checked



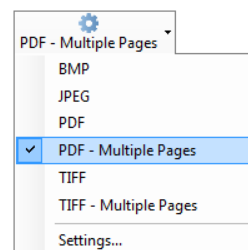
TWAIN driver control panel (Scan Setup interface)

Scanning a Book

The Book Scan button in ScanWizard DI is quite helpful when you want to scan a physical book and save it as an electronic file. The scanned result can be used directly as an E-book and you do not need any editing software to maintain it later.

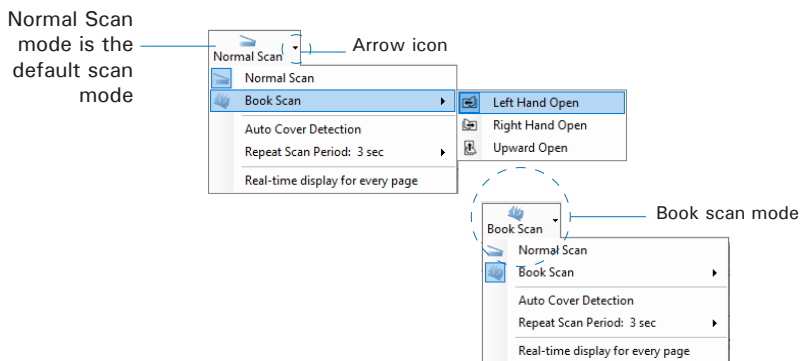
1. Launch ScanWizard DI as a stand-alone program by clicking on the *ScanWizard DI* icon on the desktop.
2. Follow the procedure (steps 3 through 8) for “Scanning Documents” section to specify your scanning requirements in the interface.
3. Click the *OK* button to close the Scan Setup interface and return to the Main interface of ScanWizard DI.
4. In the Main interface, click the *File Name* menu button to select a file format for the scanned images.

If you want to save all scanned pages of your book in one file, please select “PDF-Multiple Pages” or “TIFF-Multiple Pages” from the drop-down option menu.



5. If it is the first time that you scan a book, follow the steps below to switch to the Book Scan mode from the Normal Scan mode.
 - a) Click the *Arrow* icon next to the Normal Scan button (by default) to bring up the Scan mode options menu.
 - b) Move your cursor upon the “Book Scan” and click to select it, the Book Scan button will appear on the screen. Then, select an opening direction for your book from its submenu.

When done, the Book Scan mode is activated.



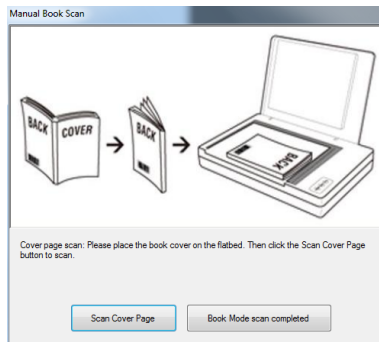
According to the opening direction of a book, the system offers you three choices: Left Hand Open, Right Hand Open and Upward Open. Move your cursor upon the option to highlight and select it.

6. Next, click the *Book Scan* button to start your book scan.

- a) When the Book Scan button is pressed, a “Manual Book Scan” window appears on the screen to guide you to put the cover page of the book on the scan bed.

Follow the instructions and graphs there to put the cover page on the scan bed.

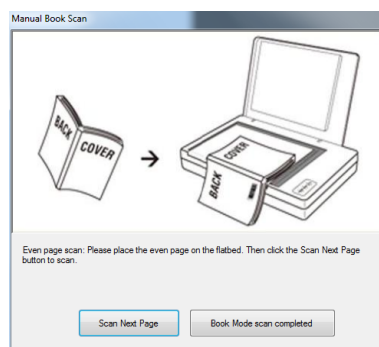
When done, press the “Scan Cover Page” button to start scanning of the cover page.



- b) When the scan is complete, the window will guide you to put the even page of the book on the scan bed.

Follow the instructions and graphs there to put the even page on the scan bed.

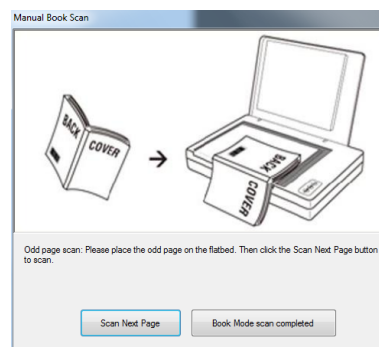
When done, press the “Scan Next Page” button to start scanning of the even page.



- c) When the scan is complete, the window will guide you to put the odd page of the book on the scan bed.

Follow the instructions and graphs there to put the odd page on the scan bed.

When done, press the “Scan Next Page” button to start scanning of the odd page.

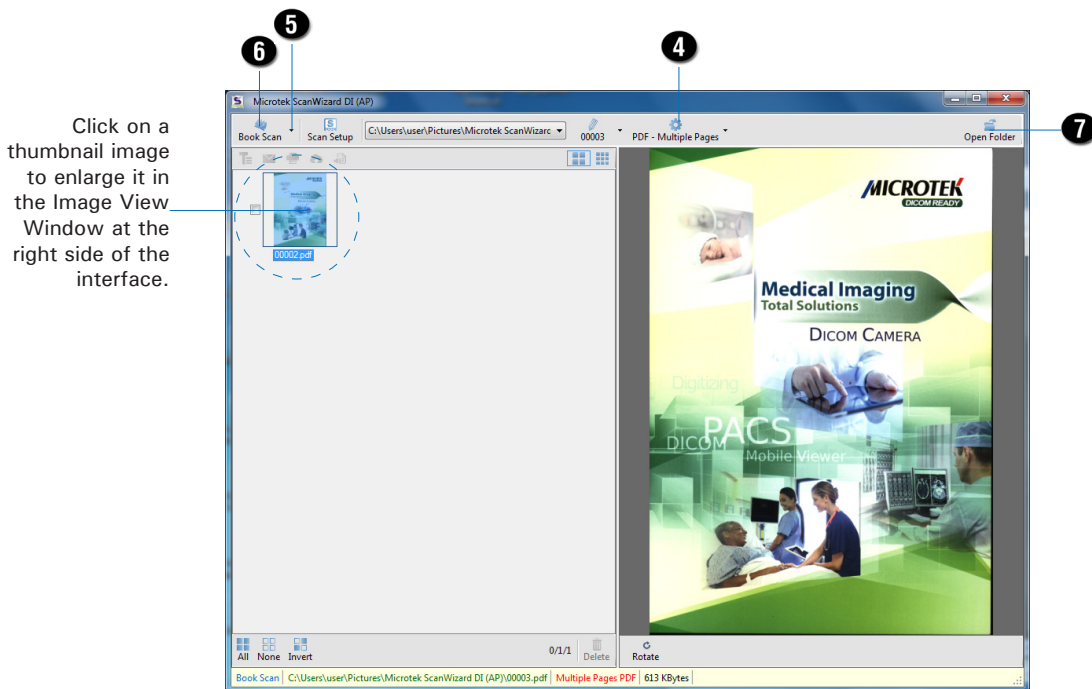


- d) Repeat step b) and c) until you finish scanning of all pages in your book.

When done, press the “Book Mode scan completed” button to finish scanning the book.

When done, the scanned images will be automatically saved into the folder defined in the File Location menu box. At the same time, the scanned images will be displayed in thumbnail sizes in the Thumbnail View window and labeled with the chosen file format.

- Click the *Open Folder* button to locate the scanned images if you want to view.



AP control panel (Main interface)

Scanning Documents from an Application

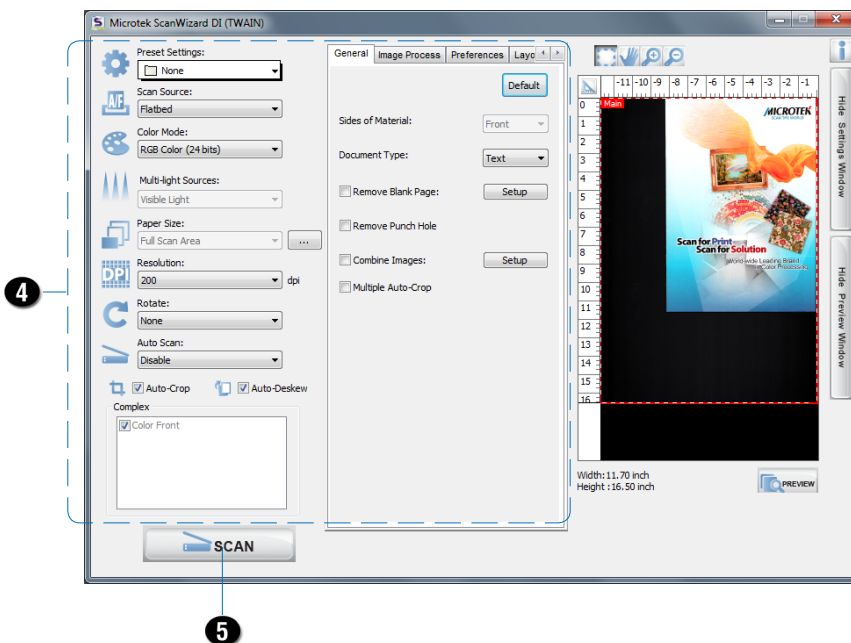
This scanning scenario guides users to scan documents from an application other than ScanWizard DI, such as Adobe PhotoShop.

1. Place the document to be scanned facing down on the scanner's glass surface.
2. Launch your application (e.g., Adobe PhotoShop).
3. Select the "Microtek ScanWizard DI (TWAIN)" driver in the Import options from the File menu.

When succeeded, the ScanWizard DI (TWAIN) driver interface appears on the screen.

4. In the interface, follow the procedure (steps 4 through 8) for "Scanning Documents" section to specify your scanning requirements.
5. When finished, click the *Scan* button to start scanning.

When done, the scanned images is then delivered to the Adobe PhotoShop and opened automatically, where the images can be saved, printed, or edited as your desired.



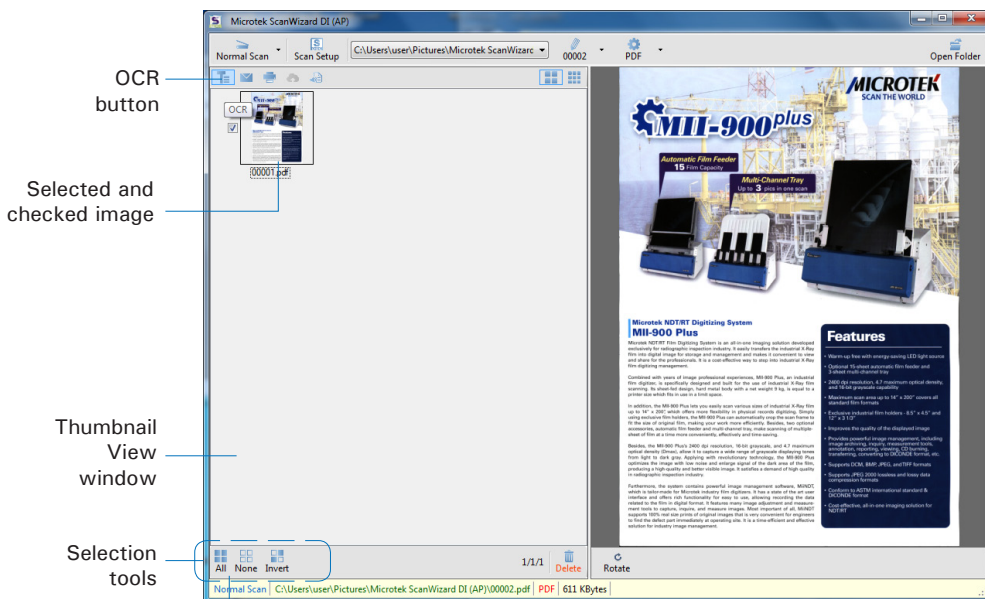
Utilizing Scanned Documents

Depending on your needs, you may utilize your scanned and saved documents directly in the following ways.

Scanning for OCR

The OCR (Optical Character Recognition) function allows to convert the scanned and saved images into searchable PDF or text files that can be edited in any common word processing application.

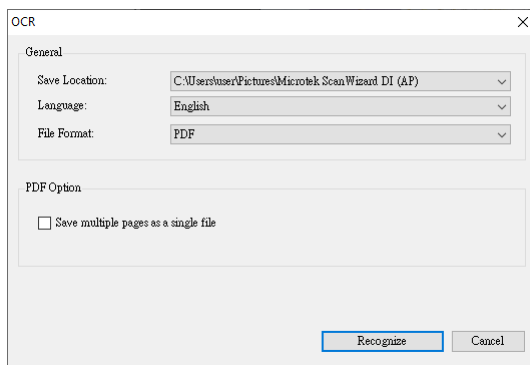
1. Check the box next to the images or use the selection tools (All and Invert) to select the image files you want to perform OCR in the Thumbnail View window.



If you like to select all images at one time, click the All button.

2. Click the *OCR* button in the Thumbnail View window to activate the OCR Settings window.

3. In the OCR Settings window, set up related requirements:

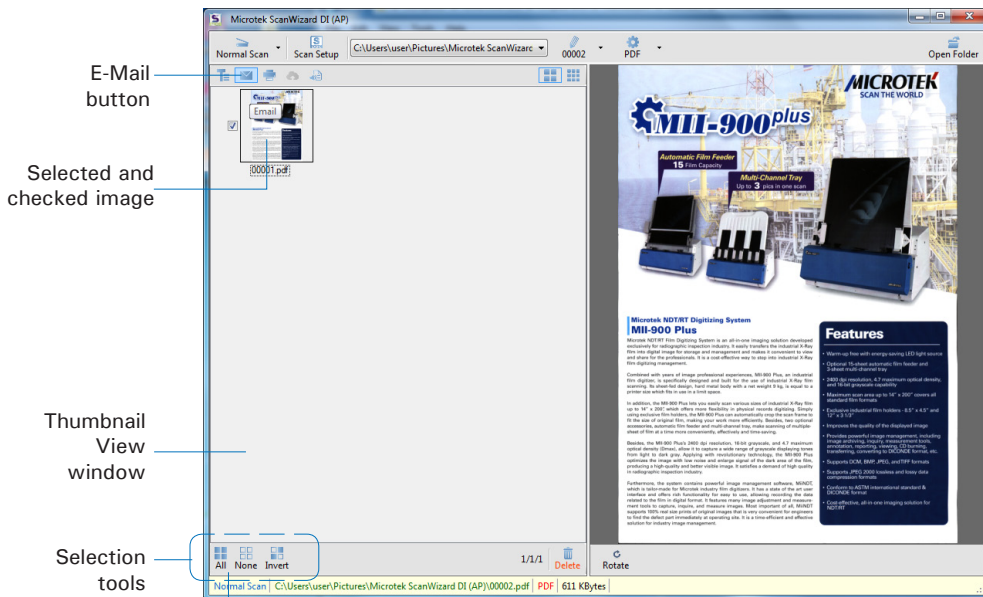


- Save Location: Specify a directory for saving the converted files.
 - Language: Select a language in which the original text document is written. OCR supported languages include English, German, Portuguese, Korean, and Chinese.
 - File Format: Select a file format for the converted files. Supported file formats include PDF and TXT. When PDF is selected, the “PDF Option” section is enabled at bottom of the window.
 - Save multiple pages as a single file: If this option is checked, the system allows you to save the multiple scanned image files as a single file when OCR is complete.
4. When done, click the *Recognize* button to perform OCR.
- Once OCR is complete, the converted file is sent to your chosen folder.

Scanning for E-mail

The e-mail function allows the scanner to save and send the scanned images to the default E-mail application assigned by the system. This lets you share your scanning results with others fast and easily.

1. Check the box next to the images or use the selection tools (All and Invert) to select the image files you want to send out by E-mail in the Thumbnail View window.



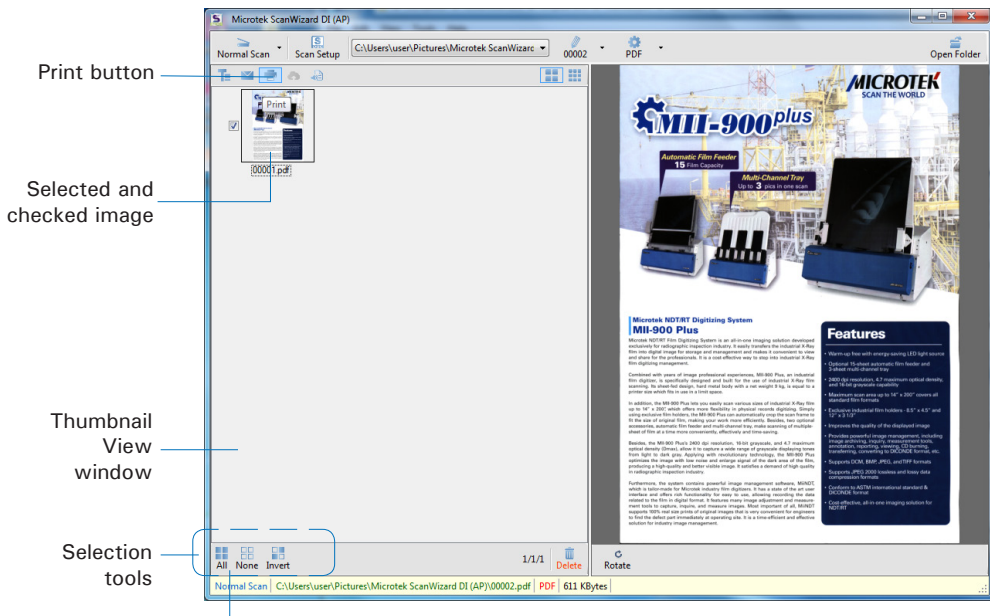
If you like to select all images at one time, click the All button.

2. Click the *E-Mail* button in the Thumbnail View window to activate the default E-Mail application. Then, follow instructions of the E-Mail application you are using to send out the selected image files.

Scanning for Copying

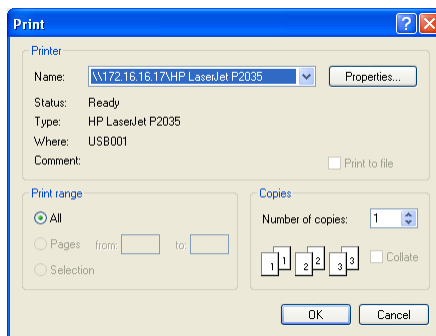
The Print function allows the scanner to work like a copier. Using together with your printer, documents can be printed successively without interruptions. This feature transforms your scanner and printer into a convenient copy station.

1. Check the box next to the images or use the selection tools (All and Invert) to select the image files you want to make a copy in the Thumbnail View window.



If you like to select all images at one time, click the All button.

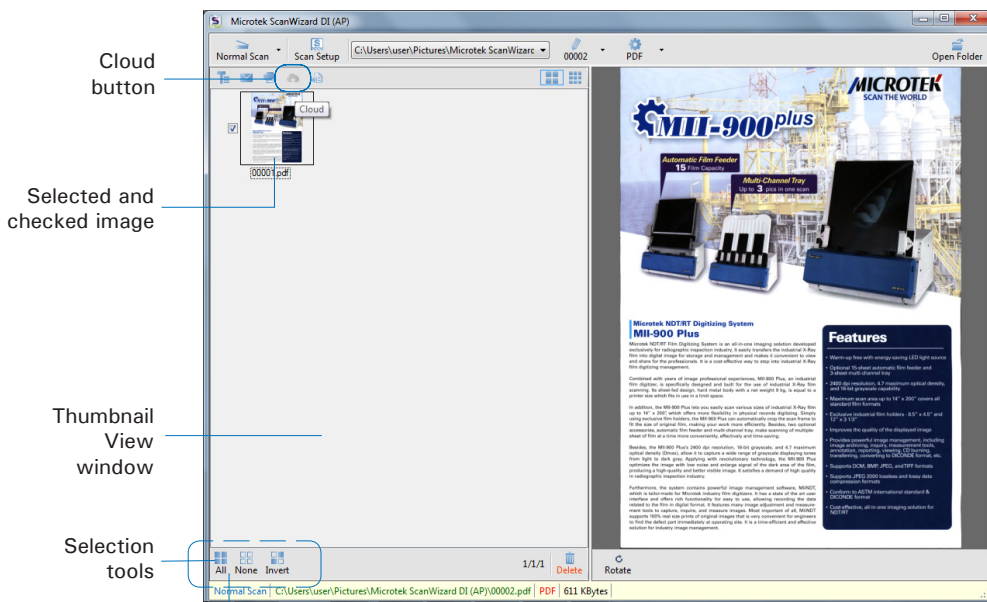
2. Click the *Print* button in the Thumbnail View window to activate the Print window.
3. Specify the number of copies to be made, then click *OK*.



Scanning to Cloud

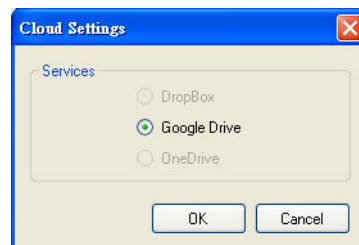
The Cloud function allows to save the scanned image files locally and also attach it to paste to the internet storage spaces assigned by the website service providers. This lets you back up your scanning results in a safer way.

1. Check the box next to the images or use the selection tools (All and Invert) to select the image files you want to save and upload in the Thumbnail View window.



If you like to select all images at one time, click the All button.

2. Click the *Cloud* button in the Thumbnail View window to activate the Cloud Settings window.
3. In the Cloud Settings window, select a webside service provider to which you want to upload your scanned files. Please note that only the providers who have been installed and detected by the system will be available in the list.
4. When done, click the *OK* button to start uploading of scanned files.

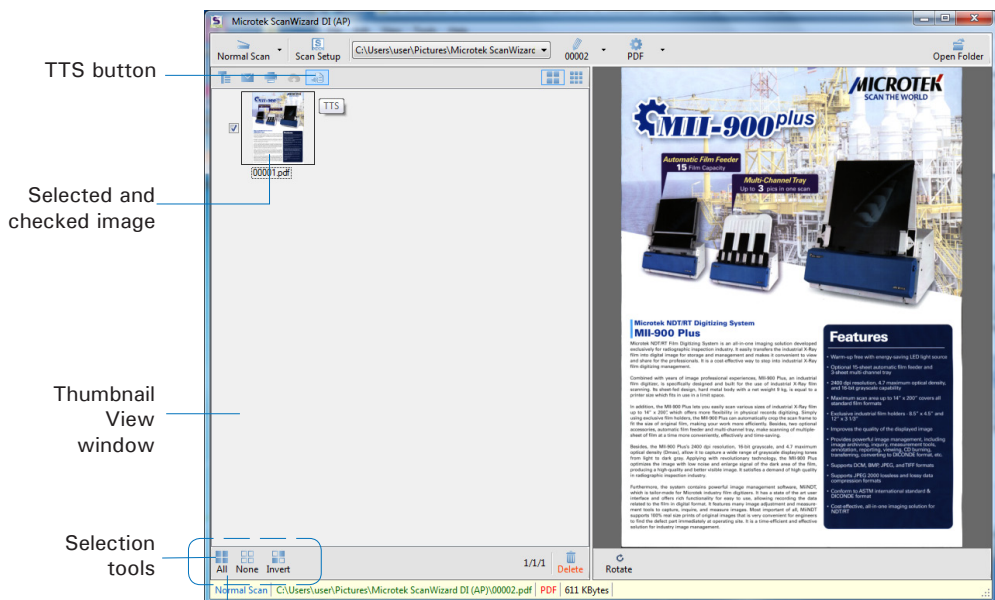


Once the uploading process is complete, there will be a “cloud” mark appearing at the left corner of the image in the Thumbnail View window.

Scanning as Text-to-Speech (TTS)

The Text-to-Speech (TTS) function allows to convert the scanned and saved images into text files that can be read out word by word by the system.

1. Check the box next to the image to select the image file you want to save and transfer as a TTS file in the Thumbnail View window.

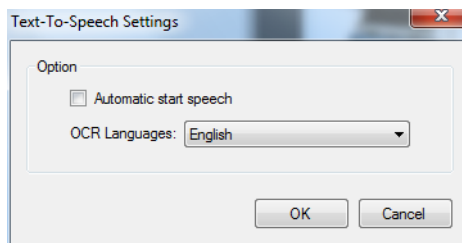


If you like to select all images at one time, click the All button.

2. Click the *Text-to-Speech (TTS)* button in the Thumbnail View window to activate the TTS Settings window.
3. In the TTS Settings window:

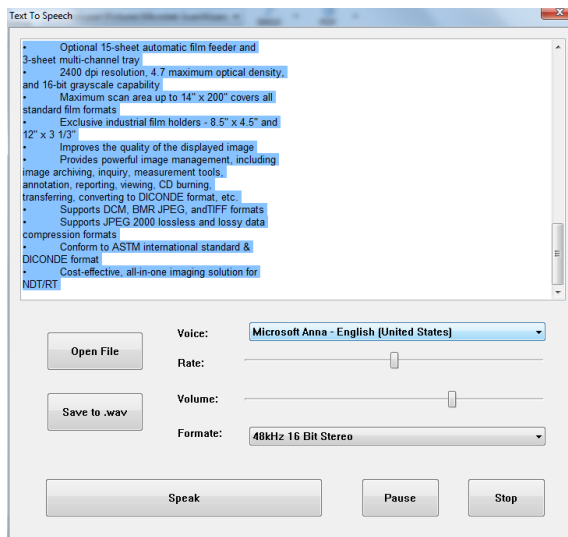
Automatic start speech: If this option is checked, the saved and converted file will be opened and read out word by word in orders automatically in the "Text to Speech" window. If this option is not checked, the saved and converted file will be opened and highlighted in the "Text to Speech" window.

OCR Languages: Select a language in which the original text document is written. Supported options include most common used languages in the world.



- When done, click the *OK* button to perform TTS.

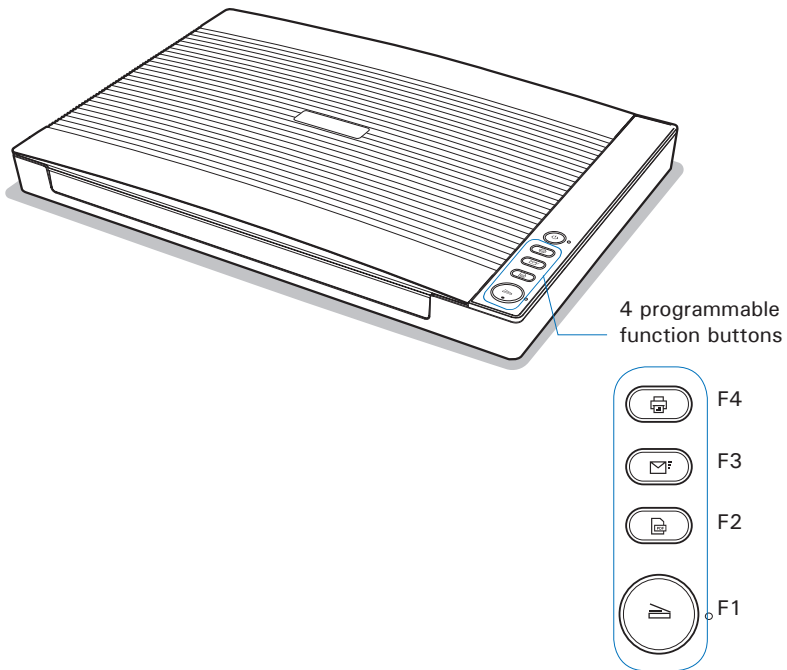
Once TTS is complete, The scanned and recognized file will be opened in “Text to Speech” window.



Scanner Button

The XT5750 HS scanner is equipped with 4 physical function buttons that can be customized to automate a number of predefined operations, such as scanning to a file, sending an image to your printer or e-mail account, scanning for OCR, etc.

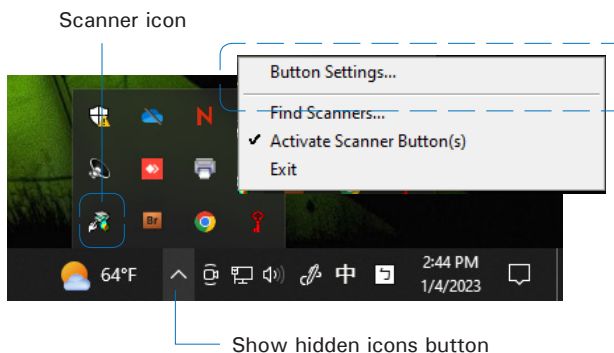
Customizing is done through the Scanner Button Settings interface in the ScanWizard DI, as explained next.



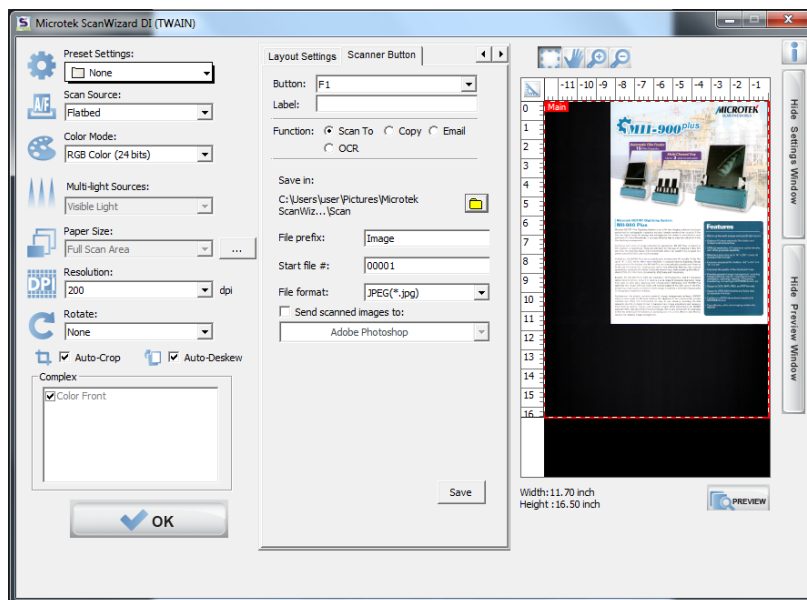
Starting Up Scanner Button Settings Interface

Before setting up scanner function buttons, follow the steps below to enable the Scanner Button Settings interface.

1. Open up the hidden icons by clicking the *Show hidden icons* (small up arrow) button in the taskbar at the right corner of the Windows desktop.



2. Locate the *Scanner* icon in the hidden icons box and right-click it; then, select *Button Settings (or Settings)* from the options menu to activate the Scanner Button Settings interface.



Scanner Button Settings Interface

Customizing the Scanner Button

1. Follow the steps in “Starting Up the Scanner Button Settings Interface” to activate the Scanner Button Settings interface.
2. Follow the procedures (steps 4 through 8) for the “Scanning Documents” section to specify your scanning requirements in this interface.

When done, click “</>” to switch back to the “Scanner Button” panel.

3. In the panel, specify your requirements for the scanner button that you wish to define.

- a) Select the button to be defined from the *Button* options.

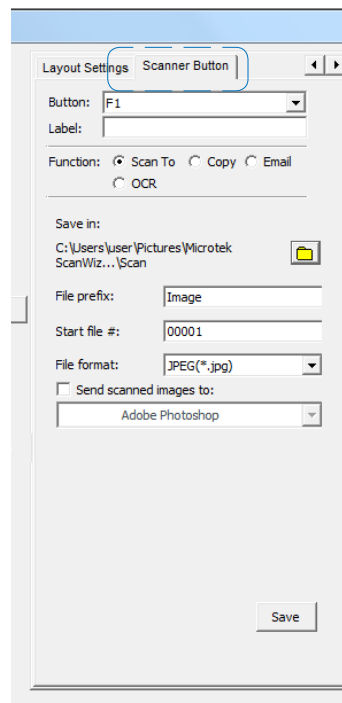
- b) Key in your preferred string in the *Label* edit box for the selected button.

- c) Make your selection among the *Function* radio buttons below to define your selected button. The four functions provided are:

- **Scan To:** Captures images that can be automatically saved as files or sent to another application for further processing. This is the default selection.
- **Copy:** Scans the image and sends it to your printer, transforming your scanner and printer into a convenient copy station. Simply specify the number of copies you want.
- **Email:** Captures images that can be automatically saved as files or sent to the system default E-mail application.
- **OCR:** Performs OCR (Optical Character Recognition) of a document and converts it to a fully editable digital file. Saves time from retyping documents into your word processor.

- d) Next, specify a file’s name, saving location, and saving format for the scanned images.

- e) When done, click the *Save* button to save the parameters currently used for the selected button.



4. To define another custom function button if desired, follow steps 2 through 3 of this section.
5. When done, click the *OK* button to exit the Scanner Button Settings Interface.

NOTE:

1. When you have finished the settings for the function buttons in the interface, you have to exit interface before you perform the predefined scanning task by pressing the buttons on the scanner.
2. If ScanWizard DI is launched and the Main interface (AP control panel) is activated on the screen, the scanned image files will appear in the Thumbnail View window for your viewing after you perform the scanning task by pressing the buttons on the scanner.

How the Scanner Button Works

When you finish customizing the function buttons, follow the steps below to perform the scanning task by pressing the function button on the scanner. The scan will be performed in accordance with the designated button function using the parameters configured in the Scanner Button Settings interface.

1. Place the document to be scanned facing down on the scanner's glass surface.
2. Exit the Scanner Button Settings interface.
3. Press one of scanner buttons on the scanner to activate the function associated with that button you defined. Press the button again to cancel the ongoing scanning task if needed.

When done, the scanned images will be automatically saved into an assigned folder in the "Scanner Button" panel.

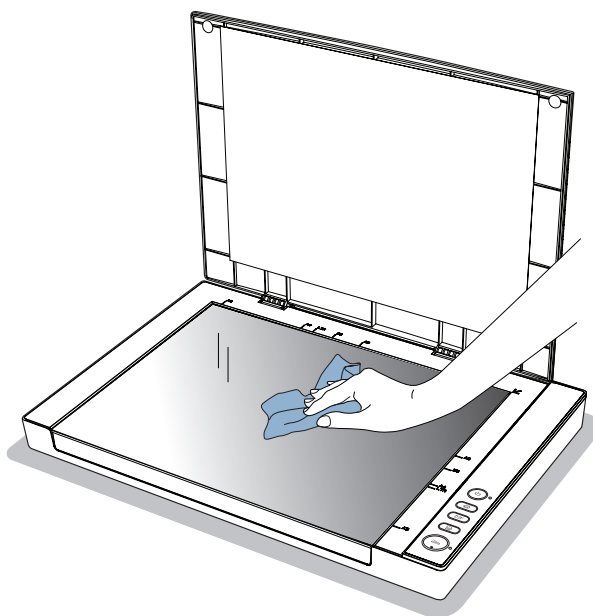
4. If necessary, specify new settings for each button. Follow the procedures (steps 1 through 5) for the "Customizing the Scanner Buttons" section to specify your new requirements for the buttons that you wish to redefine.

Care and Cleaning

To ensure optimal performance from the scanner, it is important to clean the glass surface of the scanner on a regular basis.

Cleaning the Scanner Glass Surface

1. Lift the scanner lid.
2. Then use a soft, non-abrasive and lint-free cloth to gently wipe the glass surface area on the scanner flatbed.
3. When done, close the scanner lid.



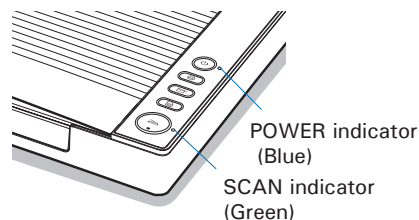
NOTE: Do not use any detergents, synthetic cleaning solutions, cleaning naphtha, or other solvents to clean the glass surface directly. To remove stains use a swab moistened with alcohol in an approximate concentration of 95%.

Appendix

Troubleshooting

The LED indicators on the button panel of the scanner indicate different states of the scanner. The POWER indicator stands for power and should always stay on steady when the scanner is on.

- ○ **Blue On** - Ready to scan
- ● **Green Flashing** - Scanning
- ● **Red On** - Error
- ○ **All Off** - Scanner is off



First, make sure that you have followed Steps 1 to 3 as described in the “Initial Setup” section of this document (unpack, install, connect). Then if your problem is listed here, try the suggested solution.

1. **No light comes on when the scanner is turned on.**
 Make sure the scanner is connected to your computer and plugged into a power source.

 Press and hold the Power button until the POWER indicator becomes blue.
2. **The Add/Remove Hardware Wizard appears on your screen.**
 Click the “Cancel” button and close the ScanWizard DI software.

 Disconnect the USB cable from your computer, and refer to the installation instructions in this document.
3. **When trying to scan, an error message appears on your screen that reads, “Can’t Find Scanners”.**
 Make sure the scanner is connected to your computer and plugged in to a power source.

 Uninstall and reinstall the ScanWizard DI software.
4. **When trying to scan, an error message “Code: -1000, No response from scanner” appears on your screen.**
 Make sure that the POWER indicator has become blue. If not, press and hold the Power button until the POWER indicator becomes blue.
5. **After clicking “Scan,” a blank screen appears.**
 Uninstall and reinstall the ScanWizard DI software.

Other Troubleshooting

The indicator lights up when an error occurs

1. SCAN indicator is in red.

Make sure the USB cable is securely connected to the scanner and the computer.

Make sure the scanner driver is installed and appeared in the "Device Manager" under Windows correctly.

Make sure the scanner driver is installed and the scanner has been detected and appeared in the "Device Manager" under Windows.

If the scanner is disconnected from your computer, turn off the scanner and then turn it on again.

2. SCAN indicator keeps on flashing in green and does not stop.

Press and hold the Power button until the POWER indicator (blue) has been put out; then, turn the scanner on again.

Restart the ScanWizard DI software.

If the problem still exists, unplug the power adapter and plug it back in and then turn the scanner on again.

Cannot start scanning

1. Cannot use the scanner function buttons to scan.

Make sure the USB cable and power adapter are securely connected to the scanner and the computer.

Make sure the scanner is turned on.

Make sure the scanner driver is installed and appeared in the "Device Manager" under Windows correctly.

Make sure the "Scanner Button Settings" interface is exited.

2. Cannot use ScanWizard DI software to scan.

Make sure the USB cable and power adapter are securely connected to the scanner and the computer.

Make sure the scanner is turned on.

Make sure the scanner driver is installed and appeared in the "Device Manager" under Windows correctly.

If the "Scanner Button Settings" interface is running, quit from it and then restart the ScanWizard DI software.

3. Cannot use the scanner TWAIN interface to scan.

If you are using a TWAIN-compliant application (ex. Adobe Photoshop), make sure the correct scanner TWAIN driver (ScanWizard DI) is selected.

If you are still not able to scan with the TWAIN-compliant application, please reinstall TWAIN driver (ScanWizard DI) and then try it again.

If you run Adobe Photoshop in 32-bit mode, make sure you have installed PhotoShop TWAIN Plug-in .

The scanner TWAIN interface is not supported in Adobe Photoshop when it's run in 64-bit mode.

Scanned image problems

1. Dirt or spots appear on the scanned image.

Make sure the glass surface of the scanner is clean.

Make sure the surface of the scanned original is clean.

Do not press the document or the scanner lid with too much force. If doing so, smudges and spots may appear on the scanned image.

2. Moiré patterns appear on the scanned image.

If the original is a printed document, moiré patterns may appear on the scanned image. Set an exact screen frequency of the image in a "Descreen" tool, and then scan again.

3. Scanned image is incomplete.

Make sure the document is correctly placed on the glass surface of the scanner.

Make sure the document is paced inside the area of the selected paper size.

4. Having troubles to crop multiple pictures.

Make sure the space left around documents is enough when they are placed on the scanner's glass surface.

Make sure "Multiple Auto-Crop" & "Auto-Deskew" are checked.

Make sure the Paper Size setting is set to "Full Scan Area".

Scanning problems

1. Cannot use the marked area on the scan bed to scan correctly.

Make sure the document is placed correctly and aligned with arrow mark (↖) at the upper-right corner of the scan bed.

2. Cannot scan to a folder.

Make sure the specified folder exists. If not, create the folder or specify a new folder for saving a scanned document. .

Make sure there is enough space in the disk for file saving.

3. Cannot scan to email.

Make sure your email application has been installed and your email account is configured.

If the file size of a scanned image exceeds the maximum size of the attachment set in your mail server, the file will not be sent.

4. Cannot scan to print

Make sure your printer driver is installed and the printer is connected to your computer.

Make sure your printer is turned on.

5. Cannot scan to an application.

Make sure the selected application has been installed in your computer and supports the file format you selected.

6. Scanning speed is very slow.

Scanning may take longer time when you scan the document at a higher resolution or scan a long-size paper document.

Set a lower resolution to improve the scanning speed effectively.

Scanning document applied with "Descreen" may slow down the scanning speed too.

7. The file size of the scanned image is too big.

Select a file format that supports file compression, and then define the quality level of image for the file.

Set a lower resolution for scanning.

Uninstall and reinstall scanner drivers and applications**1. Uninstall your scanner driver and application.**

You may need to uninstall and then reinstall your scanner driver and application to solve certain problems.

a) Exit all running applications and disconnect the scanner from your computer.

b) Select the scanner driver and application that you want to uninstall.

For example, on the desktop, click *Start > All Programs > Microtek ScanWizard DI for Windows*, and then *Uninstall Microtek ScanWizard DI for Windows*.

c) Follow the on-screen instructions to uninstall the scanner driver and application.

NOTE: After reinstalling the scanner driver and application, you have to unplug the USB cable and plug it back in again. And then check to see if the scanner driver is installed and appeared in the "Device Manager" under Windows correctly.

Specifications

Product Type	A3 flatbed scanner		
Model Type	MRS-1200A3LEDP		
Scanning Sensor	CIS		
Optical Resolution	1200 dpi (H) x 1200 dpi (V)		
Color Depth	48-bit		
Light Source	LED (Light Emitting Diode)		
Scanning Modes	Color, grayscale, and black-and-white in a single scanning pass		
	Input: 48-bit color/16-bit grayscale/1-bit B&W Output: 24-bit color/8-bit grayscale/1-bit B&W		
Scanning Area	11.98" x 16.8" (304 mm x 426 mm)		
Scanning Speed	4 sec @ 200 dpi, A3, Color/Grayscale/B&W		
Interface	Hi-Speed USB (USB 2.0)		
Dimensions (LxWxH)	22.2" x 15.5" x 2.4" (565 mm x 394 mm x 61 mm)		
Weight	9.5 lbs. (4.3 kg)		
Voltage	AC 100V to 240V, 50/60 Hz (Input) DC 12V, 2A (Output)		
Power Consumption	8.5W max.		
Power Supply (AC/DC adapter)	<u>Voltage</u>	<u>Manufacturer</u>	<u>Model No.</u>
	AC100V to 240V	KUANTEN	KT241120200EU
	AC100V to 240V	KUANTEN	KT241120200US
Environment	Operating temperature: 50° to 95°F (10° to 35°C) Relative humidity: 10% to 85%		

Important:

Specifications, software bundles, and accessories are subject to change without notice.
Not responsible for typographic errors.