

# Color Linear Camera JJ-C5615-12k

Surface Imperfection Inspection /  
AOI / Image Scanning Application

Color linear CCD and 5500 x 3 effective pixels

Senor size of 9.325 x 9.325  $\mu\text{m}$

Embed lens with fixed working distance  
which is about 90mm

50  $\mu\text{m}$  high resolutions (500dpi)

Line rate of 12.5K line/sec

Data rate of 6 x 50 MHz

Camera Link<sup>®</sup> Medium Interface

Supports free run & external trigger modes

Supports linkages of multi cameras, satisfying  
inspecting requirements for large-scale objects



# Color Line Scan Camera

JJ-C5615-12k is high-speed and high-resolution cameras which is developed exclusively by Microtek for industrial inspections, combining with professionally scanner manufacturing experiences in years. With a special design, they can be pressed close to scanned objects and thus efficiently decrease working distances and installment problems on site. Designed with an integrated lens, users have no needs to be troubled with how to adjust correct focus or how to select proper lens, effectively lowering difficulty and complexity for installments. In general, JJ-C5615-12k is a cost-effectiveness color linear camera which can enhance working efficiency apparently.

## Industrial Applications

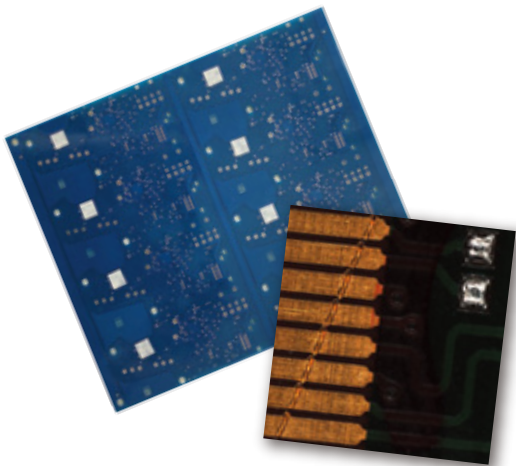
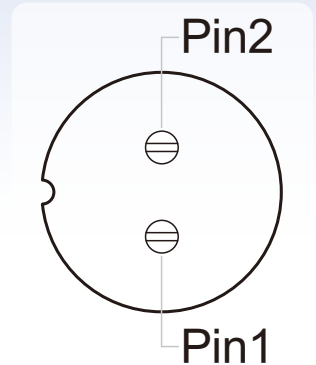
Fabric Inspection  
 Food Inspection  
 PCB Inspection  
 Flat Display Inspection  
 Inspections of Fiberglass Threads  
 Inspections of Glass and Semiconductor  
 Prepress Inspection  
 Image Scanning Application

### Camera Control Configuration

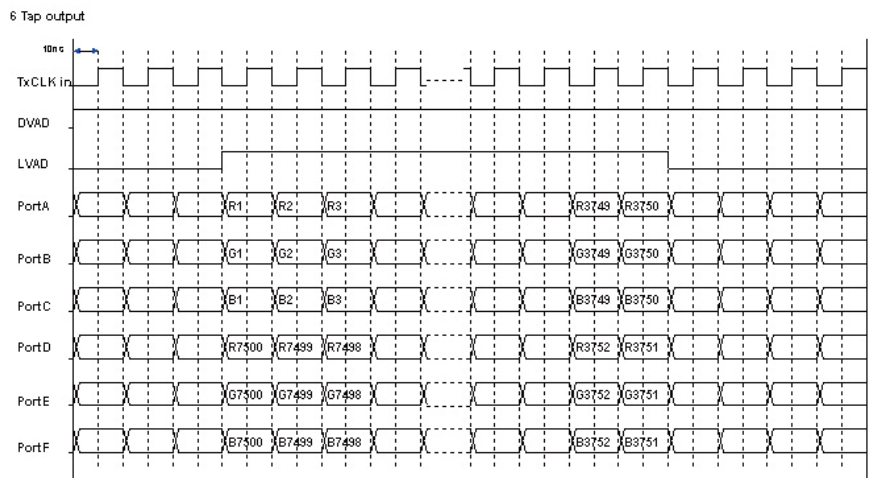
Name	Function
CC1	ExSync (External Sync.)
CC2	Not used
CC3	Select mode
CC4	Not used

### Power Supply Connector Pin Assignment

Name	Function
Pin1	+15V
Pin2	GND



### Timing Chart



## Specifications

Camera Type	Color Line Scan Camera	Video Output Format	8-bit x 3, 6 taps	Dimensions	260 x 184 x 102 mm
Image Sensor	Color Trilinear CCD	Video Output Protocol	Camera Link® Medium	Weight	3 kg
Number of Pixels	5500 pixels x 3 lines	Date Rate	6 x 50 MHz	Power Supply	15 V
Line Rate	12.5k line/sec.	Gain & Offset Range	Programmable control	Power Consumption	10.5 W (15 V/0.7 A)
Pixel Size	9.325 x 9.325 μm	Exposure Time Control	Edge-controlled mode \ Fixed exposure time	Operating Temperature	0° ~ 40° C
Line interval	37.3 μm (9.325 μm x 4 lines)	Trigger Mode	Free run \ External trigger		
Optical Resolution	500 dpi (50 μm)	Camera Control	CC1 (ExSync) \ CC3 (Select mode)		
Scan Width	11" (279.4 mm)	Connectors	Power: APEX PLT-162-R-R 2-pin (x1) Data: Camera Link, female MDR 26-pin (x2)		
Working Distance (WD)	90 mm				

\* For more details on product, please contact your local Microtek sales or dealers.

## MICROTEK INTERNATIONAL, INC.

No.6, Industry East Road 3, Hsinchu Science Park, Hsinchu 30075, Taiwan  
 Tel: +886-3-577-2155 Fax: +886-3-577-2598 www.microtek.com

