

# LS-4600T

## Contactless A0 Large-scale Digitizer



- Scanning area is up to A0 (84 x 130 cm)
- Color linear CCD with a resolution up to 600 dpi
- Two-way LED light source can be switched into one-way light source or two-way light source
- Design of one camera lens eliminates misaligned effects caused by splitting images
- The height of the scanning module and the scanned target is 5 cm
- Adopted with USB 2.0 interface to connect with PC
- The height of an adjustable scan bed is up to 30 cm
- Optional vacuum-chuck scan bed
- The DOF is up to  $\pm 5$  mm

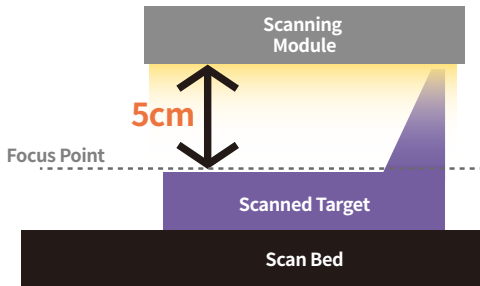


# LS-4600T

Microtek's LS-4600T is a scanner exclusively designed for capturing images of objects with large scales, thickness and heaviness. It is equipped with a A0-size scan bed which supports scanning area up to 841 x 1300 mm. With it, it is superbly easy to digitize large-scale originals in seconds. Adopted with a color linear CCD at 600 dpi resolutions, the LS-4600T is able to capture images with superior quality and vivid colors. The LS-4600T is ideal for industries who have needs on digital collections and processors of large-scale originals, such as painting with frames, old and fragile drawings, books and historical picture albums.

## Scanning with Contactless Flatbed

The LS-4600T adopts a design of a contactless flatbed which is different from that of a normal scanner. When scanning, the scanned object is placed facing up on the scan bed and the image will be captured by the top scan module; therefore, the scanned object will not be damaged and thus the design is suitable for scanning and digitalizing images of precious, fragile, thick or heavy objects. If the scanned object has a height more than 5 cm, the flatbed can be lowered down to a proper position.



## An Optional Vacuum-Chuck Scan Bed

By using a vacuum pump and an independent foot pedal, the LS-4600T is able to suck the scanned target and make it lie flatly on the scan bed. It is helpful for flatten curly, wrinkled or folded originals when scanning.

## Switch-able Two-Way LED Light Source Easily Changes Projecting Effects

According to different requirements of pictures towards projecting effects, the LED light source of the LS-4600T is switch-able and therefore can generate clearly flat images or vividly stereoscopic images. A scan of two-way LED light source can decrease the shadows generated by folded papers; on the contrary, a scan of one-way LED light source can stand out stereoscopy of images.

**A stereoscopic image created by the one-way LED light source**

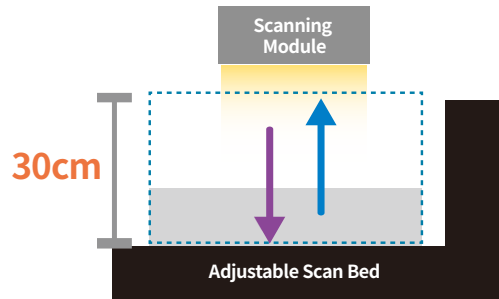
One-way LED light source

**A shadow of creases created by the two-way LED light source**

Two-way LED light source

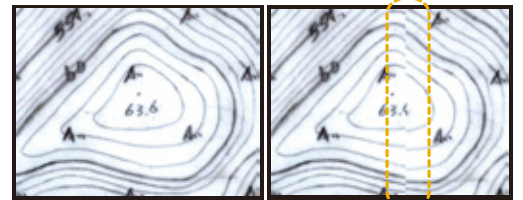
## Adjustable Scan Bed

The LS-4600T is equipped with an operating knob which is used to adjust the height and raising speed of the scan bed. The scan bed of the LS-4600T can be adjusted to proper positions to scan objects with various heights and thicknesses. The adjustable range for the scan bed is up to 30 cm.



## Design of One Camera Eliminates Misaligned Effects Caused by Splitting Images

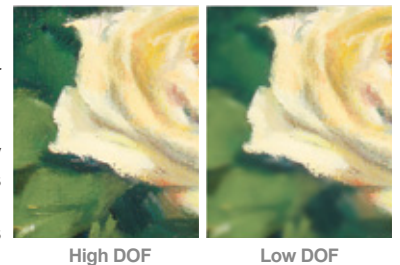
The LS-4600T is adopted with optical elements in high specifications. It is able to capture a full size of A0 image by using one lens, which eliminates misaligned effects caused by splitting images generated from two lenses.



Use of one camera lens requires no stitching when scanning images. Two lenses easily cause misaligned effects when scanning images.

## Up to ± 5 mm Depth of Field (DOF)

The depth of field (DOF) for LS-4600T is up to ± 5 mm, which is convenient for users to scan thick objects with apparently concavo-convex patterns, such as oil paintings, sculptures, leathers, tiles or wallpapers, and still keeps scanned images vivid and clear.



## Exclusive Scanning Software for Processing Large-scale Pictures

Based on preferences, users can choose the ScanWizard Graph for capturing flat and large-scale pictures; or, they can select the ScanWizard Cubi for capturing stereoscopic pictures. Either of these software programs can provide users with powerful and professional scanning functions and image-editing tools. Users can easily get what they need in several steps.

## Specifications

Scanner Type	Contactless flatbed digitizer	File Output Format	TIFF, BMP, JPEG, JPEG2000, PDF, etc.
Image Sensor	Color linear CCD	Interface	Hi-Speed USB (USB 2.0)
Optical Resolution	600 dpi	Dimensions(LxWxH)	188 x 130 x 86 cm (w/o trolley) 188 x 130 x 157 cm (w/ trolley)
Light Source	LED	Voltage	AC 100V-240V, 50/60 Hz, Max. 4A(Input)
Color Depth	48-bit (Input)	Environment	Operating temperature: 77°F (25°C)
Color Mode	Color / grayscale / black & white		
Depth of Field	± 5 mm		
Accuracy	± 1 %		
Scanning Area	841 mm x 1300 mm ( 33.1" x 51.2" )		
Scanning Speed	60 sec @ 300 dpi, A0/color and grayscale 240 sec @ 600 dpi, A0/color and grayscale		

## System Requirements

- CD-ROM drive (for installing software)
- Color display with 24-bit color output capability
- 8 GB RAM or more
- Intel Core i5 Processor at 3.0 GHz PC or higher with USB 2.0 port
- Windows 7/8/10/11

For more details on product, please contact your local Microtek sales or dealers.

## MICROTEK INTERNATIONAL, INC.

No.6, Industry East Road 3, Hsinchu Science Park, Hsinchu 30075, Taiwan  
Tel: +886-3-577-2155 Fax: +886-3-577-2598 www.microtek.com

