

# Start Here

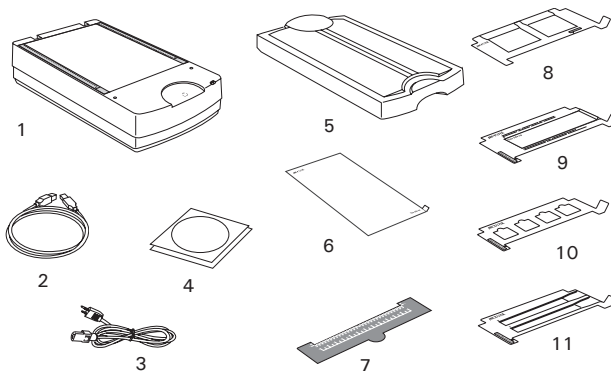
## ▼ Installing your Microtek ArtixScan 3200XL

### Step 1

### Unpack Contents

Unpack your scanner package and check for major components.

1. ArtixScan 3200XL (lower base)
2. USB Cable
3. Power Cord
4. Software DVDs
5. TMA 1600-III
6. Black Plate
7. U-shaped Ruler (Calibration Ruler)
8. 4" x 5" Film Template
9. 120 Film Template with Black Plate
10. 35mm Slide Template
11. 35mm Filmstrip Template



### Step 2

### Install Software

**Important:** Do not remove the yellow stickers from your scanner until you are told to do so.

You must install software before connecting your scanner. Always close any open programs, and turn off Anti-virus utilities before installing software.



#### PC:

- A. Place the **Microtek Software DVD** into a drive, and follow the on-screen instructions to install the scanner driver and software.
- B. Restart your computer at the end of all software installation.

If the Microtek Software Installer screen does not come up automatically, double-click the following in succession: My Computer; the DVD-ROM icon; then **cdsetup.exe** to start the installer program.

*NOTE: If your computer with no DVD drive, please go to the Microtek Download site, <https://microtek.com/en/download>, and download the required programs for your scanner and install them on your computer.*

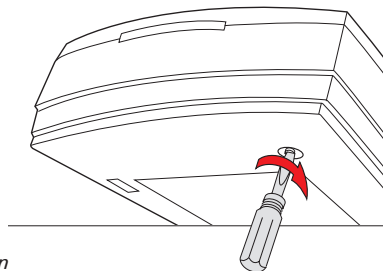


#### MAC:

- A. Go to the Microtek Download site, <https://microtek.com/en/download>.
- B. Enter the model name "ArtixScan 3200XL" and select the operating system "macOS 10.15 or later"; then, click **Search**.
- C. After the search is complete, click **Download** next to the "ScanPotter 2" driver to start downloading the file.
- D. When finished, double-click the downloaded file "**scanpotter\_2.x.x.dmg**" to open it; then, drag "**ScanPotter.app**" into your "Applications" folder and then it will be installed.

## Step 3 Unlock Scanner

- Remove the yellow "Step 3" sticker from your scanner.
- With the scanner power off, tilt the front right corner of the scanner to see the locking screw at the bottom.
- Using a screwdriver, push and turn the locking screw counterclockwise to the unlock position. When successfully unlocked, the screw will push out a little, protruding slightly from the bottom of the scanner.

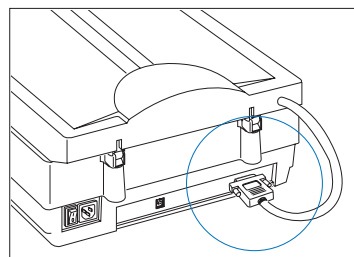


*NOTE: To lock the scanner (for shipping and other reasons), refer to "ArtixScan 3200XL User Guide" in your Microtek Software DVD.*

## Step 4 Connect Scanner

### To the scanner lid

Make sure the scanner lid (TMA) is properly installed, with its connector securely connected to the scanner's 15-pin accessory port. Refer to the next section "Using the TMA-III" for the details about the connection of the TMA.



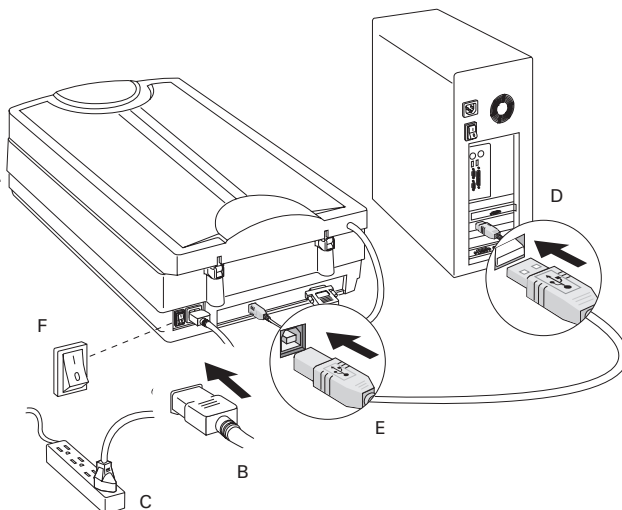
### To the power adapter

- Remove the yellow "Step 4" sticker from your scanner.
- Connect the power cord to the back of the scanner.
- Plug the power cord into a power source.

### To the Hi-Speed USB cable

- Connect one end of the cable to your computer.
- Connect the other end of the cable to the scanner.
- Press the power switch at the back of your scanner, and wait for the indicator light on the front panel to stop blinking and stay on steady.

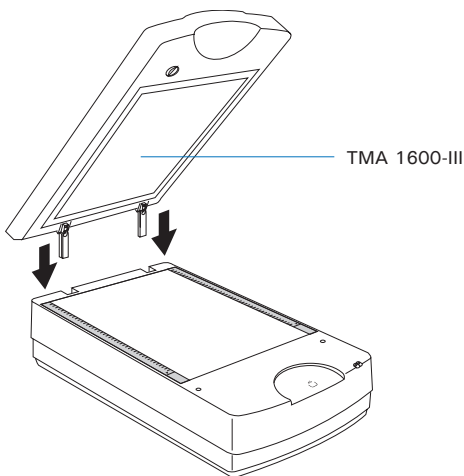
The system will detect your scanner automatically.



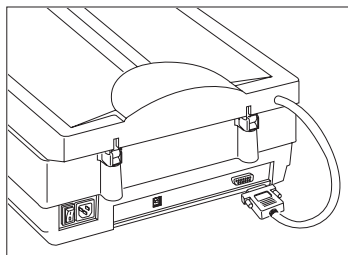
# Using the TMA 1600-III

## I. Installing the TMA 1600-III

1. Make sure that the scanner power is turned off.
2. Attach the TMA 1600-III by sliding the posts at the rear of the TMA 1600-III into the holes.

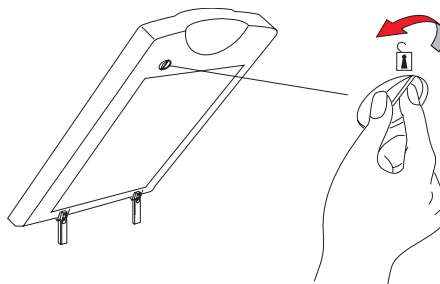


3. Plug the connector of the TMA 1600-III into the scanner's 15-pin accessory port.



## II. Unlocking the TMA 1600-III

1. Remove the yellow "Step 3" sticker from the TMA 1600-III.
2. Look for the locking knob at the base of the TMA 1600-III.
3. Turn the locking knob counterclockwise to the unlock position "🔓".

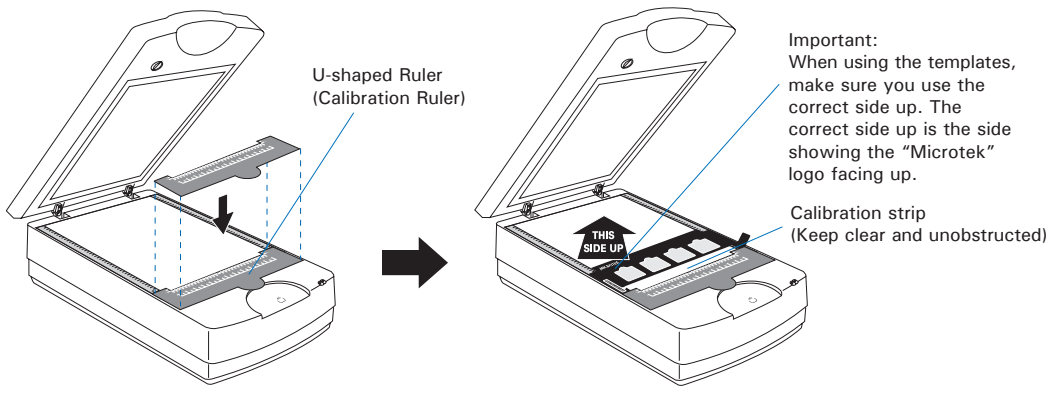


**NOTE:** If you need to transport your TMA 1600-III, you will have to lock it back. For more details, refer to "ArtixScan 3200XL User Guide" in your Microtek Software DVD.

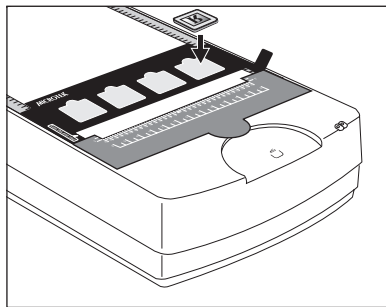
### III. Positioning the Scan Material

#### A. Positioning Transparencies

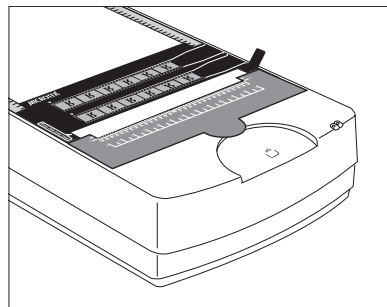
- To scan standard-size transparent film such as 35mm slides, 35mm filmstrips, 4"x5" film, or 120 film: Use the individual film templates and the U-shaped Ruler (Calibration Ruler) included with the scanner package.
  1. To place the U-shaped Ruler, insert the tabs at the back of the ruler into the holes on the both sides of the scanner's upper front surface, making sure that it has been oriented correctly.
  2. Align the template's front corners firmly against the top corners (left and right) of the **U-shaped Ruler** located at the front of the scanner.



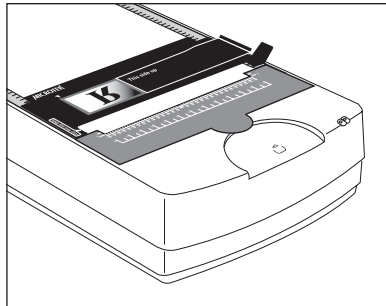
Using the 35mm Slide Template



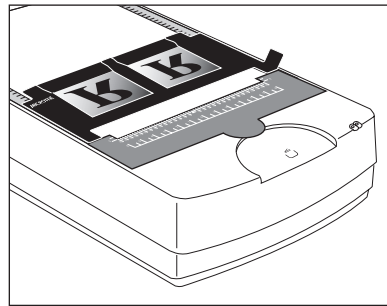
Using the 35mm Filmstrip Template



Using the 120 Film Template

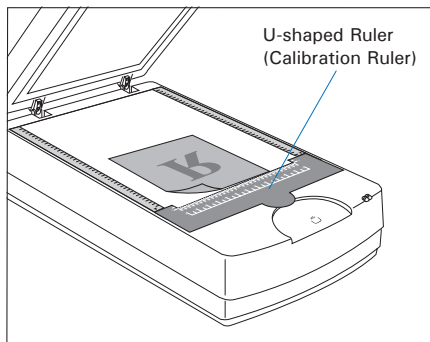


Using the 4" x 5" Film Template

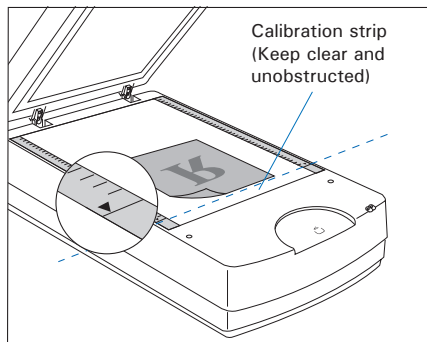


- To scan non-standard-size transparent film such as 8" x 10" film, medical and dental X-rays, you can scan those film working together with or without the U-shaped Ruler (Calibration Ruler). The supported film size can be up to 12" x 16 1/16".
  - **Working together with U-shaped Ruler**, place the film face down on the scanner glass surface, and center the film along the U-shaped Ruler on the scanner.
  - **Working together without U-shaped Ruler**, use the red arrows printed on the vertical rulers of both sides as an alignment guide line for film placement, then place the film on the scanner glass surface.

With U-shaped Ruler



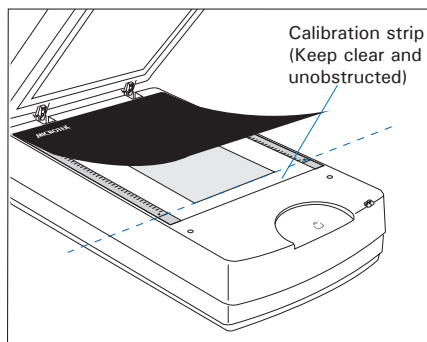
Without U-shaped Ruler



## B. Positioning Reflectives

To scan reflective originals such as photos with the TMA 1600-III, you will need to use the Black Plate included in your scanner package to shield unwanted light.

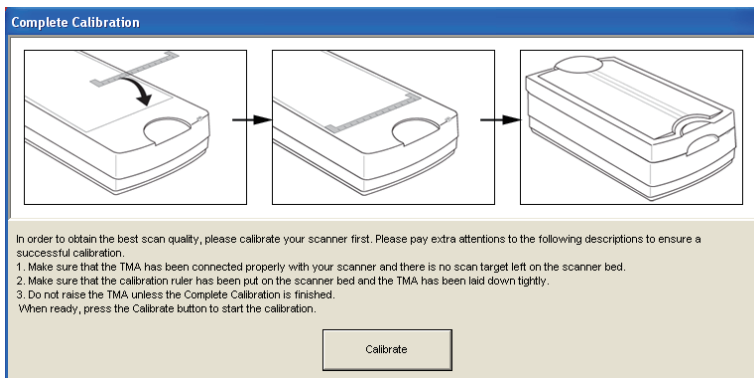
*NOTE: For more details on positioning the transparencies and reflectives on the scanner glass surface, refer to "ArtixScan 3200XL User Guide" in your Microtek Software DVD.*



# Calibrating Your Scanner

In order to ensure that your scanner will work properly and provide accurate image results, follow the steps below to calibrate your scanner before starting to scan photos or film.

1. Double-click the **ScanWizard Pro** icon on your desktop to launch ScanWizard Pro.
2. If this is your first time to launch ScanWizard Pro, you will be prompted to perform a calibration for your scanner.



3. In order to calibrate your scanner successfully, make sure that you have met all the conditions mentioned in the window. If not, follow the steps below to set up your scanner:
  - a) Follow the procedures on page 3 in this guide to install the TMA 1600-III.
  - b) Follow the step A.1 on page 4 in this guide to put the U-shaped Ruler (Calibration Ruler) on the scanner glass surface.
  - c) When finished, lower the TMA 1600-III down onto the scanner glass surface gently.
4. Click the **Calibrate** button to start calibration for your scanner.

During calibrating, a processing progress bar will appear on the screen, showing the running status of the scanner.

5. When the calibration is done completely, a window will appear on the screen to notify you. Now, you may use the ScanWizard Pro as usual.

Click the OK button to close the calibration window.

## NOTE:

- Before clicking the "Calibrate" button, make sure firmly that the TMA has been connected properly with your scanner, the U-shaped Ruler (Calibration Ruler) has been put on the scanner glass surface correctly, and the scanner glass surface has been kept clear.
- The calibration will take you amounts of time (approx. 10 minutes). Therefore, please be patient while the scanner is calibrating.
- If you update the firmware to a new version, you have to re-calibrate your scanner. For more details, refer to the "ArtixScan 3200XL User Guide" in your Microtek Software DVD and see the Calibrating Your Scanner section.

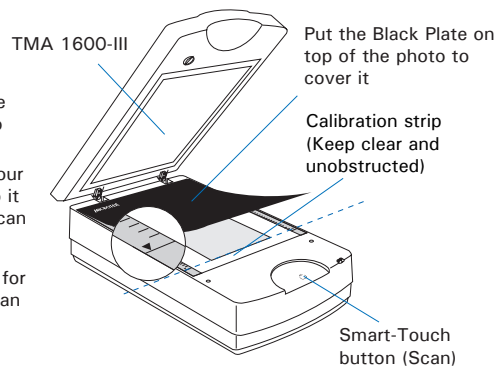
## Notice to WIA Users

Before using the WIA (Windows Image Acquisition) scanning driver to scan, you should put the U-shaped Ruler on the scanner glass surface, which ensures that your scanner will function properly. For more details about how to position the U-Shaped Ruler on the scanner glass surface, see the "Positioning the Scan Material" section in this guide.

# Your First Scan

## 1. Launch **ScanWizard Pro**.

- If this is your first time to launch ScanWizard Pro, you will be prompted to calibrate your scanner. For more details, refer to the "Calibrating Your Scanner" section.
- Next, you will be prompted to perform color calibration for your scanner, you can skip this section for now and come back to it later. Or, if you wish to perform calibration, refer to "ArtixScan 3200XL User Guide" in your Microtek Software DVD.
- Continuously, you will be prompted to set up color matching for your scanner, click OK for now to accept the settings. You can always change the settings at a later time. For more details, refer to "ArtixScan 3200XL User Guide" in your Microtek Software DVD.



2. Position the photo face down on the scanner glass surface toward the front of the scanner, as detailed in the "Positioning Reflectives" section of this guide.
3. In the Preview window of ScanWizard Pro, choose **Reflective** from the Scan Material menu.
4. Click the Overview button in the Preview window to see a preliminary scan of the image.
5. Select the **Scan Frame** tool, and choose the area to be scanned by sizing the marquee around the targeted area.
6. Specify your scanning requirements in the Settings window. Choose the desired image type and resolution, and adjust the scan frame settings if necessary.
7. Adjust image quality if necessary, using the **Advanced Image Correction** tools.
8. Click the **Scan** (or "Batch") button in the Preview window or on the scanner unit to start scanning.

6

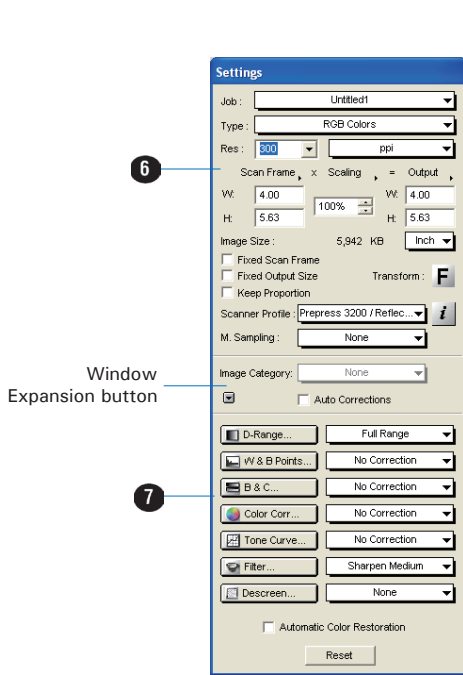
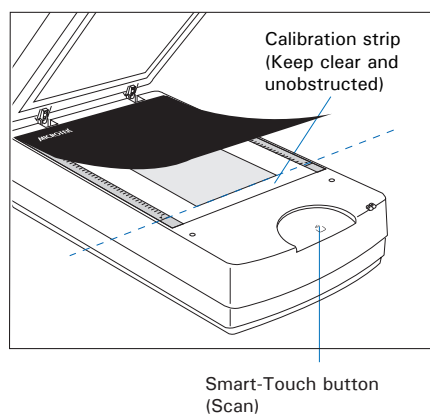
Settings window

4   5   8   3

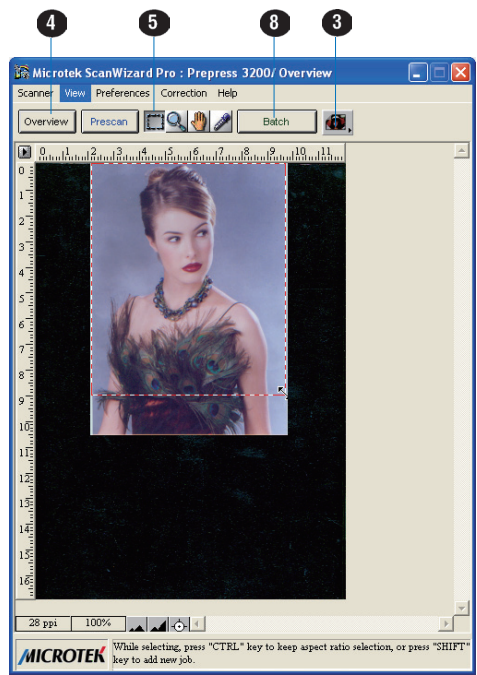
Preview window

# Scanning Photos

1. Position the photo face down on the scanner glass surface toward the front of the scanner, as detailed in the "Positioning Reflectives" section in this guide.
2. Launch **ScanWizard Pro**.
3. In the Preview window of ScanWizard Pro, choose **Reflective** from the Scan Material menu.
4. Click the **Overview** button in the Preview window to see a preliminary scan of the image.
5. Select the **Scan Frame** tool, and choose the area to be scanned by sizing the marquee around the targeted area.
6. Specify your scanning requirements in the Settings window. Choose the desired image type and resolution, and adjust the scan frame settings if necessary.
7. Adjust image quality if necessary, using the **Advanced Image Correction** tools.
8. Click the **Scan** (or "Batch") button in the Preview window or on the scanner unit to start scanning.



Settings window



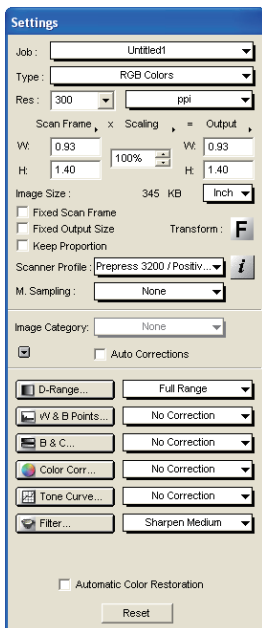
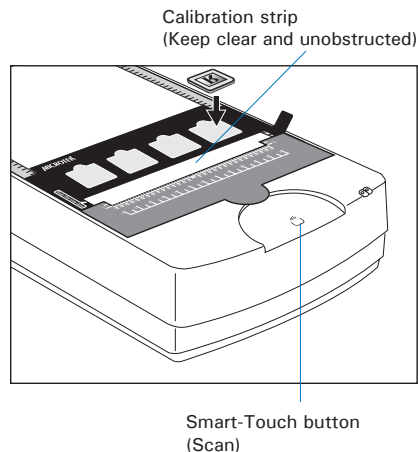
Preview window

# Scanning Positive or Negative Film

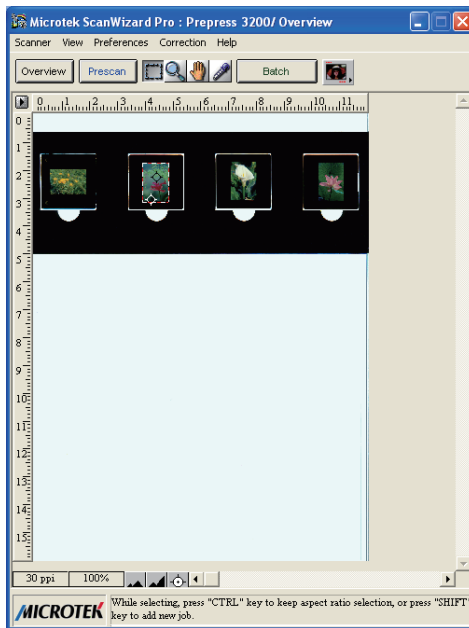
1. Select the film you wish to scan, then follow the procedures for positioning transparent films, as detailed in the "Positioning Transparencies" section of this guide.
2. Launch **ScanWizard Pro**.
3. If scanning positive film such as 35mm slides:
  - a) Go to the Preview window of ScanWizard Pro and from the Scan Material menu, choose **Positive / Positive Film**.
  - b) Follow steps 4 to 7 of the procedures detailed in "Scanning Photos".

If scanning negatives:

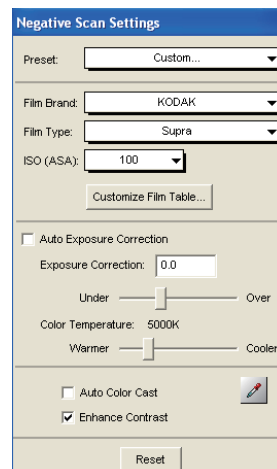
- a) Go to the Preview window of ScanWizard Pro and from the Scan Material menu, choose **Negative / Negative Film**. The Negative Scan Settings window appears.
  - b) Go to the Negative Scan Settings window, choose the film brand, film type, and ISO settings that match the film you use. For more details, refer to "ScanWizard Pro Reference Manual" in your Microtek Software DVD and see the Addendum to ScanWizard Pro section.
  - c) Follow steps 4 to 7 of the procedures detailed in "Scanning Photos".
4. Click the **Scan** (or "Batch") button in the Preview window or on the scanner unit to start scanning.



Settings window



Preview window



Negative Scan Settings window  
(only for negative film scanning)

# Basic Scanning for Mac Users

## 1. Place your material.

- To scan photos: Place the photo to be scanned face down on the scanner glass surface, as detailed in the "Positioning Reflectives" section in this guide.
- To scan film: Select the film you wish to scan, then position the transparent films on the scanner glass surface, as detailed in the "Positioning Transparencies" section of this guide.

## 2. Launch ScanPotter.

Go to the **Finder** of Mac OS, click **Applications** on the Finder sidebar; then double-click **ScanPotter** icon in the **Applications** folder in your Mac.

When ScanPotter is launched, you will see the **ScanPotter** menu at the top left portion of your desktop.

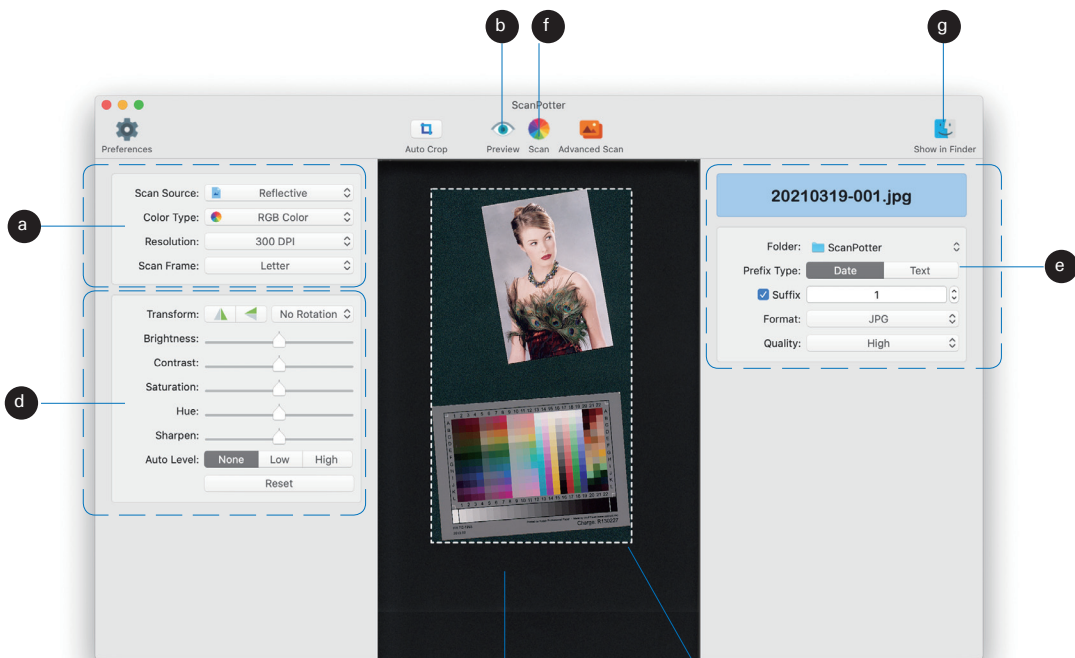
## 3. Scan your material.

- a) Specify your scanning requirements in the **Scan Settings** column.
  - In the **Scan Source** options menu, select ether **Reflective** for photos, **Negative** for negatives, or **Positive** for transparencies and slides.
  - Select a desired image output type.
  - Select a desired resolution.
  - Define a scan frame of the scanned image preview.
- b) Click the **Preview** button to perform a preliminary scan of the image in the Preview window.
- c) If necessary, drag a corner of the scan frame (floating dotted rectangle) and to re-frame the area size you want for the final scan.
- d) If necessary, adjust and enhance the image quality by using the image correction tools hereby.
- e) If necessary, specify the file attributes for the scanned image by using the options offered in the **File Saving Settings** column.
- f) Click the **Scan** button to start scanning.

When done, the scanned image will be automatically saved into the folder you assigned.
- g) Click the **Show in Finder** button and then select the scanned image to view from the opened folder.

*NOTE: For detailed information about ScanPotter, refer to the on-line help of ScanPotter.*

Basic Scanning for Mac Users (cont.)



Preview window

Scan frame (enclosed by dotted lines)

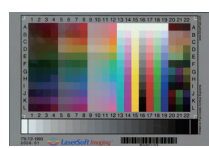
# Calibration

The Microtek Scanner ICC Profiler (MSP) program included with your ArtixScan 3200XL is used to calibrate your scanner to achieve consistent and accurate color.

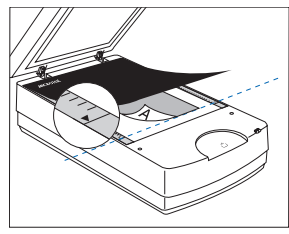
Two optional industry-standard IT8 color targets are for calibration: a Reflective target to calibrate the upper scan bed for scanning photos; and a Transparency target to calibrate the lower scan bed for scanning film.

You will be asked to calibrate your scanner the first time you run ScanWizard Pro to try to scan. You may skip calibration to proceed directly to scanning, and then choose to come back at a later time to perform calibration.

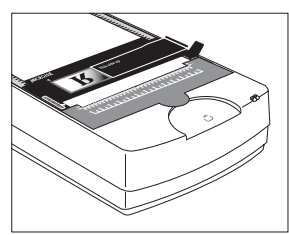
For more details on calibration, refer to the "ArtixScan 3200XL User Guide" and see the Calibration Kit section.



Reflective target

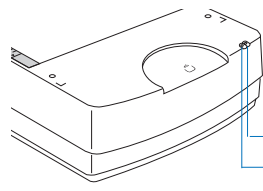


Transparency target



# Problems?

The green LED on the front panel indicates the status of the scanner. The orange LED beside it stands for power and should always stay on steady when the scanner is on.



READY indicator (Green)  
POWER indicator (Orange)



On - Ready to scan



Flashing - Scanning



Off - Call Tech Support

First, make sure that you have followed installation steps 1 through 4. If your problem is listed here, try the suggested solution.

**1. No light comes on when the scanner is turned on.** Make sure your scanner is connected to your computer and plugged into a power source.

**2. Add/Remove Hardware Wizard appears on your screen.** Click the "Cancel" button and close the Control Panel. Disconnect the USB cable from the back of your computer, and refer to the installation instructions in this guide.

**3. When trying to scan, an error message appears on your screen that reads, "Can't Find Scanners".** Make sure your scanner is unlocked (see Step 3).

Make sure your scanner is connected to your computer and plugged into a power source (see Step 4).

Uninstall and reinstall the ScanWizard Pro or ScanPotter software.

**4. After clicking scan, a blank screen appears.**

Make sure your scanner is unlocked (see Step 3).

Uninstall and reinstall the ScanWizard Pro or ScanPotter software.

**5. Having trouble scanning negatives or slides?** Make sure that you have properly inserted the templates, as indicated in the "Using the TMA 1600-III: Positioning the Scan Material" section of this guide. The templates should be placed correctly on the scanner glass surface, with the "Microtek logo" on the templates facing up.

From the Preview window of ScanWizard Pro, choose **Positive** or **Negative** from the Scan Material menu.

From the ScanPotter, go to the **Scanner Settings** column, then click the Scan Source drop-down menu to select either the **Positive** or **Negative** option.

Make sure that the calibration strip is unobstructed. For location of the calibration strip, see the "Positioning the Scan Material" section.

Uninstall and reinstall the ScanWizard Pro or ScanPotter software.

## Do You Need Assistance?

### Manuals

If you have additional questions and need further instruction or information, we provide electronic manuals for:

1. Using your ArtixScan 3200XL User Guide
2. Using the ScanWizard Pro scanning software

To access the electronic manuals: Insert the scanner's software DVD into your computer's DVD-ROM drive. Next, locate and click the "Manuals" option when the software installer window appears on your screen. Finally, select and click the title of the manual you wish to view.

### Missing Items

If your package is missing items, please call Microtek Customer Service Department.

### Drivers & Software Upgrades

After you finish the installation of software, if you found that the installed drivers and software cannot run your product or your computer system properly later, please go to the Microtek Download Service site at [microtek.com/en/download](http://microtek.com/en/download) to download and install any updates you may require.

For additional information about Microtek products, please visit our website at [www.microtek.com](http://www.microtek.com).

