

Start Here

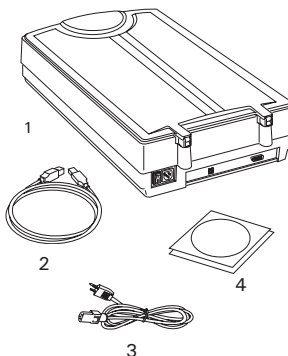
▼ Installing your Microtek ScanMaker 1000XL Plus

Step 1

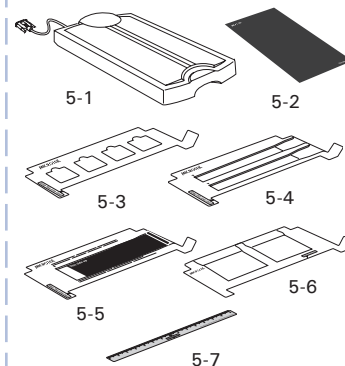
Unpack Contents

Unpack your scanner package and check for major components.

1. ScanMaker 1000XL Plus
2. USB cable
3. Power cord
4. Software DVDs
5. TMA 1600-III (Optional)
 - 5-1. TMA 1600-III unit
 - 5-2. Black Plate
 - 5-3. 35mm Slide Template
 - 5-4. 35mm Filmstrip Template
 - 5-5. 120 Film Template with Black Plate
 - 5-6. 4" x 5" Film Template
 - 5-7. Film Alignment Ruler



For TMA 1600-III only



Step 2

Install Software

Important: Do not remove the yellow stickers from your scanner until you are told to do so.

You must install software before connecting your scanner. Always close any open programs, and turn off Anti-virus utilities before installing software.



PC:

- A. Place the **Microtek Software DVD** into a drive, and follow the on-screen instructions to install the scanner driver and software.
- B. Restart your computer at the end of all software installation.

If the Microtek Software Installer screen does not come up automatically, double-click the following in succession: My Computer; the DVD-ROM icon; then **cdsetup.exe** to start the installer program.

NOTE: If your computer with no DVD drive, please go to the Microtek Download site, <https://microtek.com/en/download>, and download the required programs for your scanner and install them on your computer.



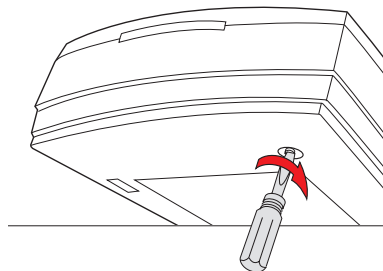
Mac:

- A. Go to the Microtek Download site, <https://microtek.com/en/download>.
- B. Enter the model name "ScanMaker 1000XL Plus" and select the operating system "macOS 10.15 or later"; then, click **Search**.
- C. After the search is complete, click **Download** next to the "ScanPotter 2" driver to start downloading the file.
- D. When finished, double-click the downloaded file "**scanpotter_2.x.x.x.dmg**" to open it; then, drag "**ScanPotter.app**" into your "Applications" folder and then it will be installed.

Step 3

Unlock Scanner

- A. Remove the yellow "Step 3" sticker from your scanner.
- B. With the scanner power off, tilt the front right corner of the scanner to see the locking screw at the bottom.
- C. Using a screwdriver, push and turn the locking screw counterclockwise to the unlock position. When successfully unlocked, the screw will push out a little, protruding slightly from the bottom of the scanner.



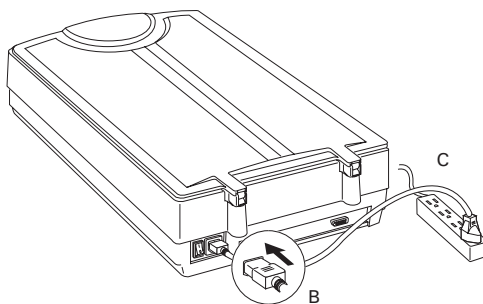
NOTE: To lock the scanner (for shipping and other reasons), refer to the ScanMaker 1000XL Plus User Guide.

Step 4

Connect Scanner

To the power adapter

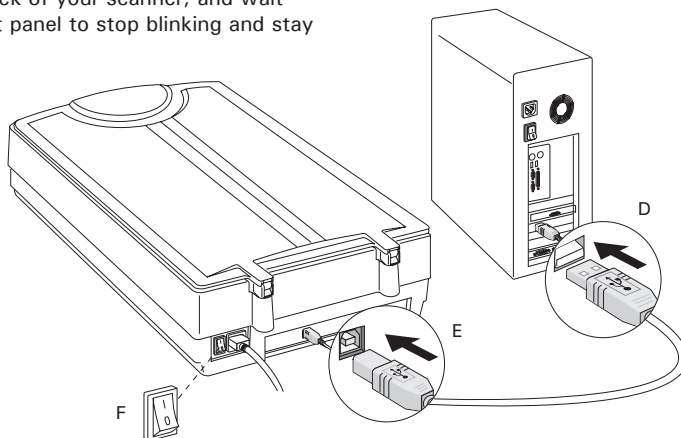
- A. Remove the yellow "Step 4" sticker from your scanner.
- B. Connect the power cord to the back of the scanner.
- C. Plug the power cord into a power source.



To the Hi-Speed USB cable

- D. Connect one end of the cable to your computer.
- E. Connect the other end of the cable to the scanner.
- F. Press the power switch at the back of your scanner, and wait for the indicator light on the front panel to stop blinking and stay on steady.

The system will detect your scanner automatically.

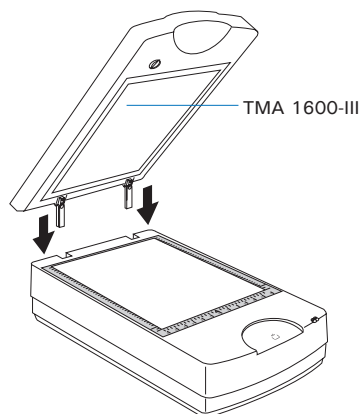
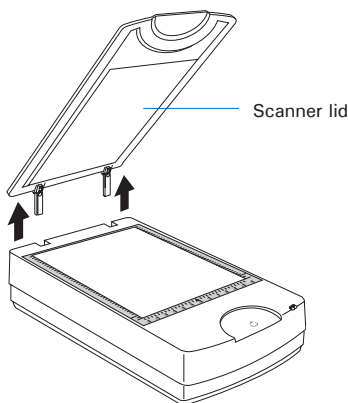


Using the TMA 1600-III

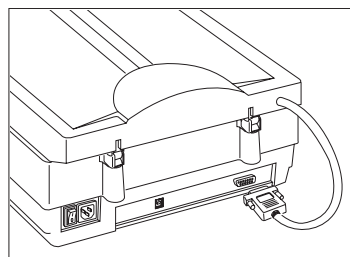
NOTE: If you purchased a standard ScanMaker 1000XL Plus without the TMA 1600-III, see only the section on positioning reflective materials without the TMA 1600-III, on page 5.

I. Installing the TMA 1600-III

1. Make sure that the scanner power is turned off.
2. Remove the scanner lid, then attach the TMA 1600-III by sliding the posts at the rear of the TMA 1600-III into the holes.

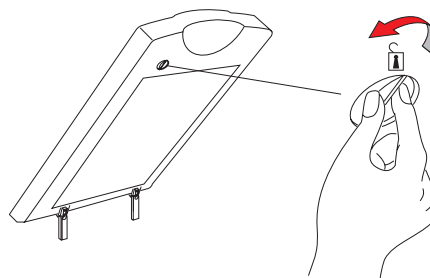


3. Plug the connector of the TMA 1600-III into the scanner's 15-pin accessory port.



II. Unlocking the TMA 1600-III

1. Remove the yellow "Step 3" sticker from the TMA 1600-III.
2. Look for the locking knob at the base of the TMA 1600-III.
3. Turn the locking knob counterclockwise to the unlock position "🔓".



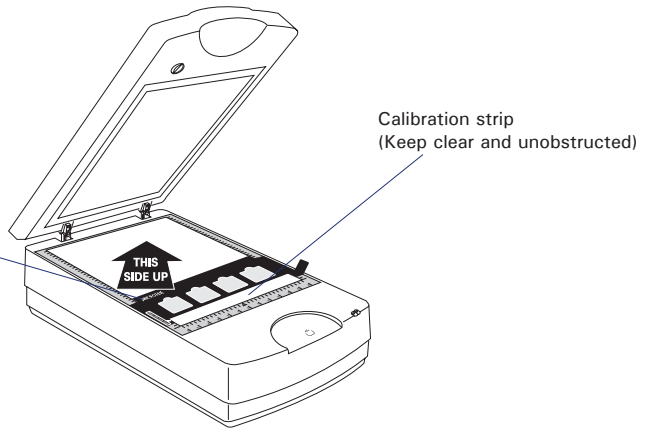
NOTE: If you need to transport your TMA 1600-III, you will have to lock it back. For more details, please see the ScanMaker 1000XL Plus User Guide.

Positioning the Scan Material

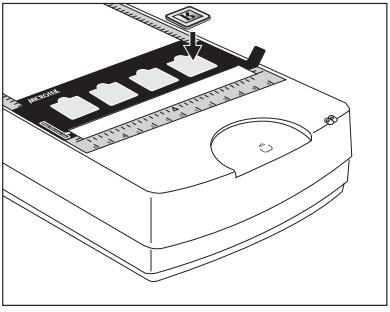
A. Positioning Transparencies

- To scan standard-size transparent film such as 35mm slides, 35mm filmstrips, 4"x5" film, or 120 film: Use the individual film templates included with the TMA 1600-III package. Make sure the templates are oriented correctly on the scanner glass surface, with the Microtek logo on the templates facing up. Keep the calibration strip on the glass surface clear and free of obstruction at all times.

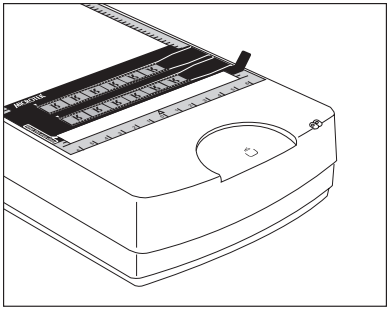
Important:
When using the templates, make sure you use the correct side up. The correct side up is the side showing the "Microtek" logo facing up.



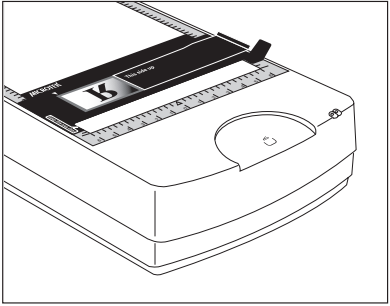
Using the 35mm Slide Template



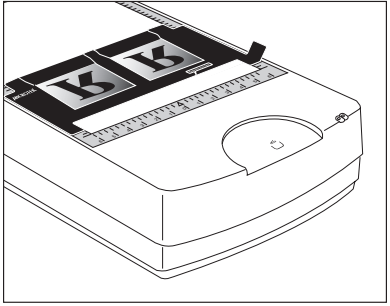
Using the 35mm Filmstrip Template



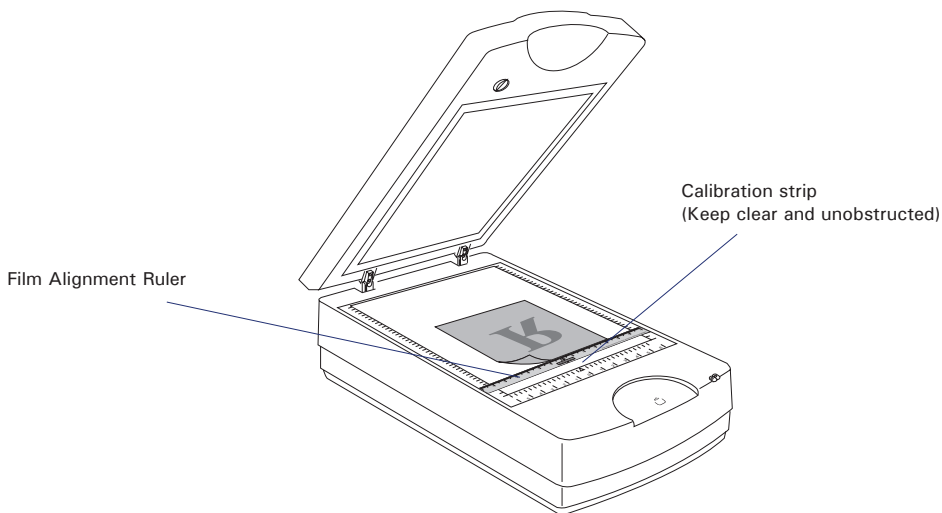
Using the 120 Film Template



Using the 4" x 5" Film Template



- To scan non-standard-size transparent film, use the **Film Alignment Ruler** included with the TMA 1600-III package. Place the Film Alignment Ruler on the scanner glass surface. Then place the film to be scanned face down on the scanner glass surface, centering the film along the Film Alignment Ruler. Make sure you keep the calibration strip on the glass surface clear and free of obstruction at all times.

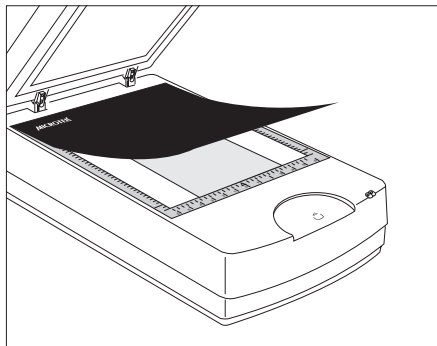


B. Positioning Reflective Materials

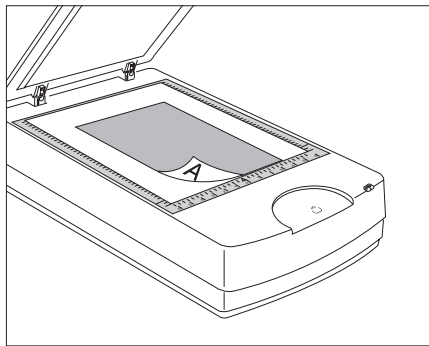
To scan reflective materials such as photos or prints, you can use the ScanMaker 1000XL Plus with or without the TMA 1600-III.

- To scan with the TMA, you will need to use the **Black Plate** included with your TMA 1600-III package to shield unwanted light.
- To scan without the TMA, simply lift the scanner lid, and place the reflective original to be scanned on the glass surface. Center the photo along the **U-shaped ruler** of the scanner.

With TMA 1600-III



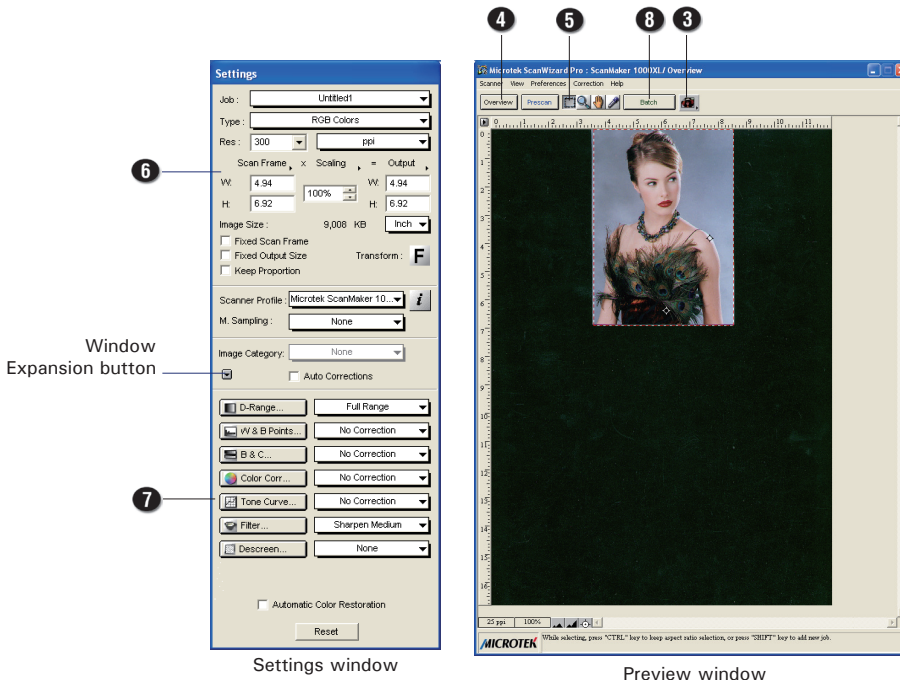
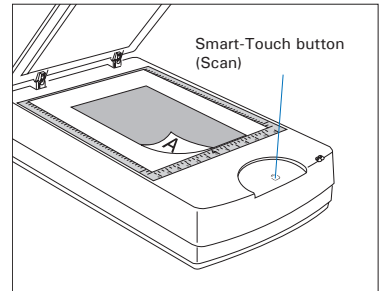
Without TMA 1600-III



Basic Scanning for PC Users

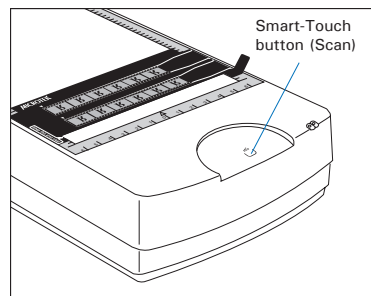
Scanning Photos

1. Place the photo to be scanned face down on the scanner glass surface, as detailed in the "Positioning Reflective Materials" section in this guide.
2. Launch **ScanWizard Pro**.
 - If asked to calibrate your scanner, you can skip this section for now and come back to it later. Or, if you wish to perform calibration, see the "ScanMaker 1000XL Plus User Guide" in your Microtek Software DVD for more details.
 - If prompted to set up Color Matching, click **OK** for now to accept the settings. You can always change the settings at a later time. For more details, see the "ScanMaker 1000XL Plus User Guide" in your Microtek Software DVD.
3. In the Preview window of ScanWizard Pro, choose **Reflective** from the Scan Material menu.
4. Click the **Overview** button in the Preview window to see a preliminary scan of the image.
5. Select the **Scan Frame** tool, and choose the area to be scanned by sizing the marquee around the targeted area.
6. Specify your scanning requirements in the Settings window. Choose the desired image type and resolution, and adjust the scan frame settings if necessary.
7. Adjust image quality if necessary, using the Advanced Image Correction tools.
8. Click the **Scan** (or "Batch") button in the Preview window or on the scanner unit to start scanning.



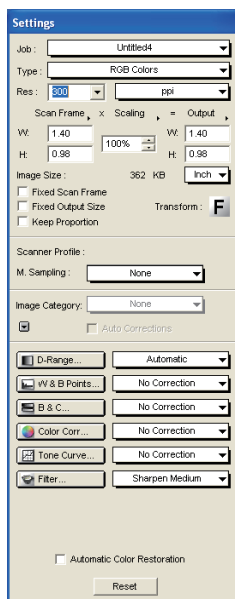
Scanning Positive or Negative Film

1. Select the film you wish to scan, then position the transparent films on the scanner glass surface, as detailed in the "Positioning Transparencies" section of this guide.
2. Launch **ScanWizard Pro**.
3. If scanning positive film such as 35mm slides:
 - a) Go to the Preview window of ScanWizard Pro and from the Scan Material menu, choose **Positive / Positive Film**.
 - b) Follow steps 4 to 7 of the procedures detailed in "Scanning Photos".



If scanning negatives:

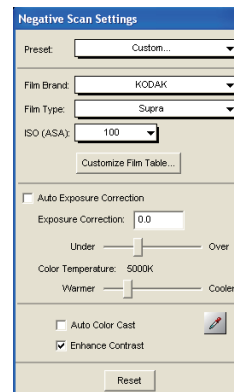
- a) Go to the Preview window of ScanWizard Pro and from the Scan Material menu, choose **Negative / Negative Film**. The Negative Scan Settings window appears.
 - b) Go to the Negative Scan Settings window, choose the film brand, film type, and ISO settings that match the film you use. For more details, refer to a PDF document called "ScanWizard Pro Reference Manual" in your Microtek Software DVD and see the "Addendum to ScanWizard Pro" section.
 - c) Follow steps 4 to 7 of the procedures detailed in "Scanning Photos".
4. Click the **Scan** (or "Batch") button in the Preview window or on the scanner unit to start scanning.



Settings window



Preview window



Negative Scan Settings window

Basic Scanning for Mac Users

1. Place your material.

- To scan photos: Place the photo to be scanned face down on the scanner glass surface, as detailed in the "Positioning Reflectives Materials" section in this guide.
- To scan film: Select the film you wish to scan, then position the transparent films on the scanner glass surface, as detailed in the "Positioning Transparencies" section of this guide.

2. Launch ScanPotter.

Go to the **Finder** of Mac OS, click **Applications** on the Finder sidebar; then double-click **ScanPotter** icon in the **Applications** folder in your Mac.

When ScanPotter is launched, you will see the **ScanPotter** menu at the top left portion of your desktop.

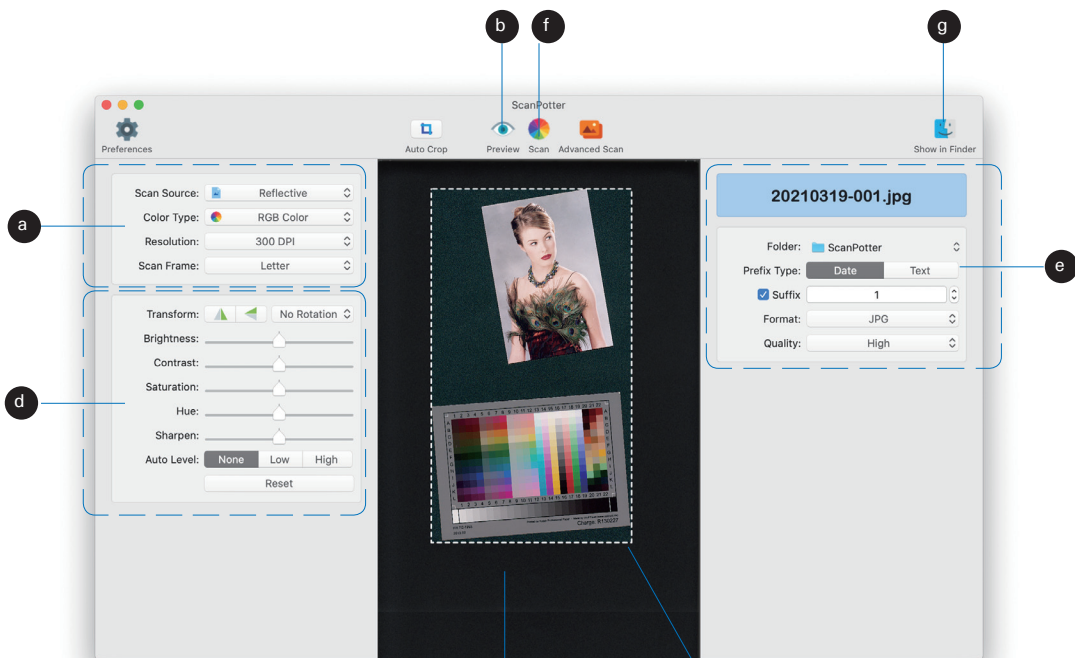
3. Scan your material.

- a) Specify your scanning requirements in the **Scan Settings** column.
 - In the **Scan Source** options menu, select ether **Reflective** for photos, **Negative** for negatives, or **Positive** for transparencies and slides.
 - Select a desired image output type.
 - Select a desired resolution.
 - Define a scan frame of the scanned image preview.
- b) Click the **Preview** button to perform a preliminary scan of the image in the Preview window.
- c) If necessary, drag a corner of the scan frame (floating dotted rectangle) and to re-frame the area size you want for the final scan.
- d) If necessary, adjust and enhance the image quality by using the image correction tools hereby.
- e) If necessary, specify the file attributes for the scanned image by using the options offered in the **File Saving Settings** column.
- f) Click the **Scan** button to start scanning.

When done, the scanned image will be automatically saved into the folder you assigned.
- g) Click the **Show in Finder** button and then select the scanned image to view from the opened folder.

NOTE: For detailed information about ScanPotter, refer to the on-line help of ScanPotter.

Basic Scanning for Mac Users (cont.)



Preview window

Scan frame (enclosed by dotted lines)

Calibration

NOTE: This section is only available for the PC users who have installed the Microtek's MSP utility, and use the IT8 color target to generate scanner ICC profiles.

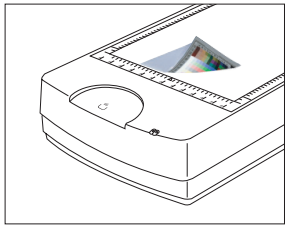
The Microtek Scanner ICC Profiler (MSP) program included with your scanner package is used to calibrate your scanner to achieve consistent and accurate color.

The industry-standard IT8 color target for MSP program you received depends on the scanner configuration that you purchased. If the IT8 color target is included with your scanner package, you may use the IT8 color target to calibrate the scanner for scanning photos or film.

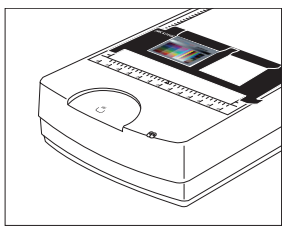
You will be asked to calibrate your scanner the first time you run ScanWizard Pro to try to scan. You may skip calibration to proceed directly to scanning, and then choose to come back at a later time to perform calibration.

For more details on calibration, refer to the section "Using the Microtek Scanner ICC Profiler (MSP)" in the scanner's User Guide in your Microtek Software DVD.

Reflective target

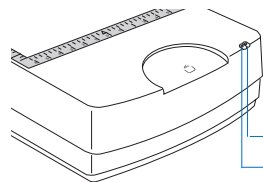


Transparency target




Problems?


The green LED on the front panel indicates the status of the scanner. The orange LED beside it stands for power and should always stay on steady when the scanner is on.



READY indicator (Green)
POWER indicator (Orange)

 On - Ready to scan

 Flashing - Scanning

 Off - Call Tech Support

First, make sure that you have followed installation steps 1 through 4. If your problem is listed here, try the suggested solution.

- 1. No light comes on when the scanner is turned on.**
Make sure your scanner is connected to your computer and plugged into a power source.
- 2. Add/Remove Hardware Wizard appears on your screen.**
Click the "Cancel" button and close the Control Panel. Disconnect the USB cable from the back of your computer, and refer to the installation instructions in this guide.
- 3. When trying to scan, an error message appears on your screen that reads, "Can't Find Scanners".**
Make sure your scanner is unlocked (see Step 3).

Make sure your scanner is connected to your computer and plugged into a power source (see Step 4).

Uninstall and reinstall the ScanWizard Pro or ScanPotter software.

- 4. After clicking scan, a blank screen appears.**
Make sure your scanner is unlocked (see Step 3).

Uninstall and reinstall the ScanWizard Pro or ScanPotter software.
- 5. Having trouble scanning negatives or slides?**
Make sure that you have properly inserted the templates, as indicated in the "Positioning the Scan Material" section of this guide. The templates should be placed correctly on the scanner glass surface, with the "Microtek logo" on the templates facing up.

From the Preview window of ScanWizard Pro, choose **Positive** or **Negative** from the Scan Material menu.

From the ScanPotter, go to the **Scanner Settings** column, then click the Scan Source drop-down menu to select either the **Positive** Film or **Negative** Film option.

Make sure that the calibration strip is unobstructed. For location of the calibration strip, see the "Positioning the Scan Material" section.

Uninstall and reinstall the ScanWizard Pro or ScanPotter software.

Do You Need Assistance?

Manuals

If you have additional questions and need further instruction or information, we provide electronic manuals for:

1. Using your ScanMaker 1000XL Plus scanner
2. Using the ScanWizard Pro scanning software

To access the electronic manuals: Insert the scanner's software DVD into your computer's drive. Next, locate and click the "Manuals" option when the software installer window appears on your screen. Finally, select and click the title of the manual you wish to view.

Missing Items

If your package is missing items, please call Microtek Customer Service.

Drivers & Software Upgrades

After you finish the installation of software, if you found that the installed drivers and software cannot run your product or your computer system properly later, please go to the Microtek Download Service site at microtek.com/en/download to download and install any updates you may require.

For additional information about Microtek products, please visit our website at www.microtek.com.

